

PRICE LINKERSOFT2 | PRICE CONTROLS CALIBRATION SOFTWARE

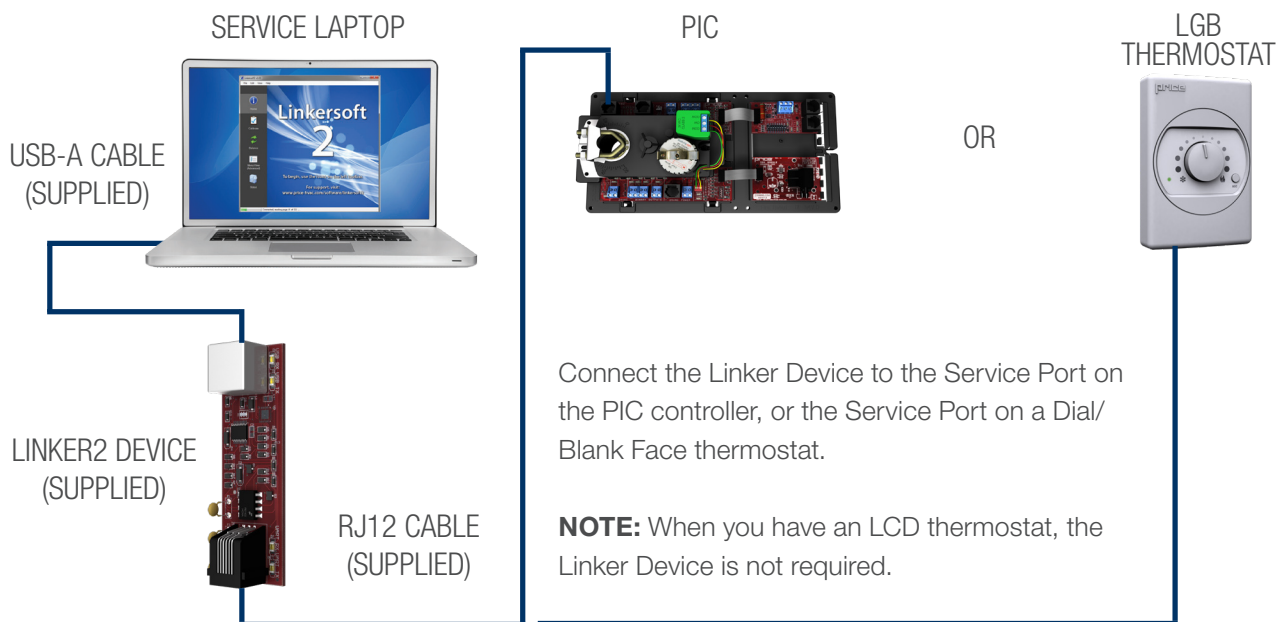
The Price Linkersoft2 calibration tool and software is used to calibrate Price controllers in a Price factory or in a designated warehouse. Linkersoft is only required to setup the controller with an initial sequence before it makes its journey out into the field for the end customer.

To change parameters in the field, the Price **LCD-Setup Tool** should be ordered and used for this purpose.

Calibrating a Price controller with the Linker device and Linkersoft software requires the following items to be successful:

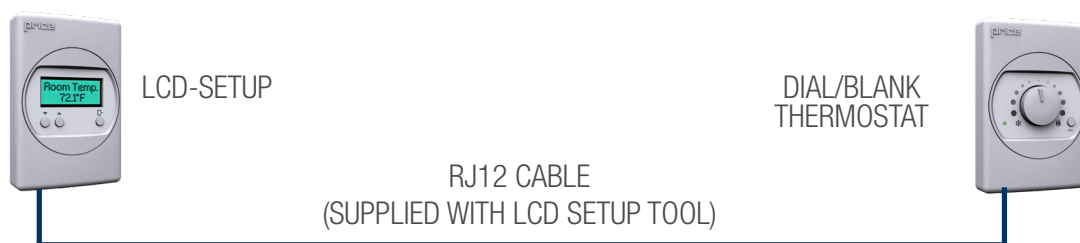
- Watch the Linkersoft2 Video on the Price website for full details and operation: <https://www.priceindustries.com/linkersoft>
- Laptop computer with Windows 7 or greater operating system (field supplied)
- Linker Device (Price supplied and comes with all required hardware)
- Linkersoft Software (Free download from the Price Website/Software tab)
- 24 VAC power applied to a Price Controller (field supplied)

LINKERSOFT CONNECTION DIAGRAM



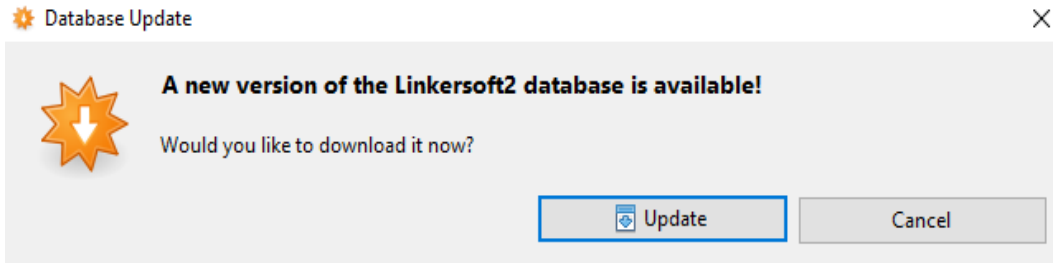
LCD-SETUP TOOL CONNECTION DIAGRAM

For use when the Dial or Blank Face Thermostat is ordered with your Price controller



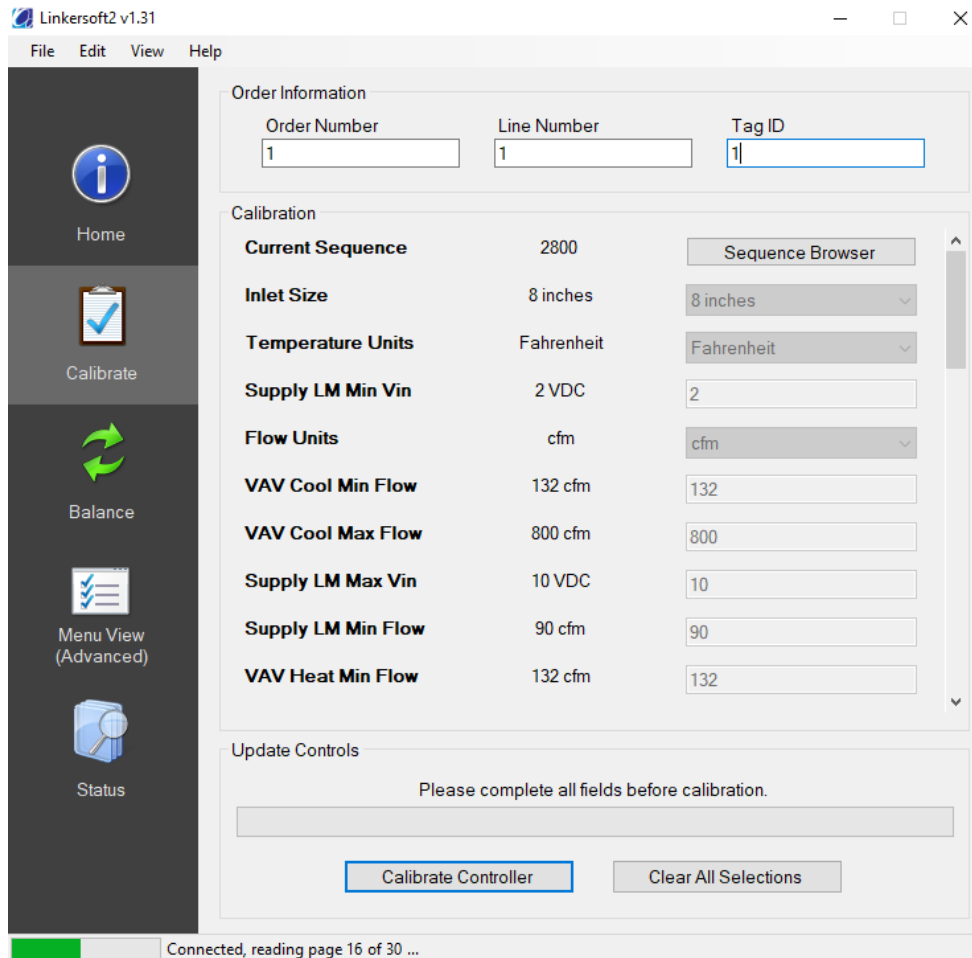
To calibrate your Price controller once you have installed the Linkersoft2 software on your computer and checked your connections open the Linkersoft2 software. **NOTE:** The controller must be powered with 24 VAC to calibrate it.

If any software updates are available Linkersoft2 will notify you when you open the program. It is recommended you keep the software up to date.



LINKERSOFT CALIBRATION SCREEN

Select the **CALIBRATE** option from the left side bar to bring up the calibration screen. Enter 1 into your Order Number, Line Number, and Tag ID as shown below for a live view of your controllers calibrated settings.



Select the **SEQUENCE BROWSER** to view the available sequences for your controller. You can also adjust your inlet size, temperature, and flow units. Once you’ve made your selection click **CALIBRATE CONTROLLER** and it will input your parameters into the controller. When finished calibrating, a window will appear that says **CALIBRATION COMPLETE**. Your Price controller is now ready for your intended application.