

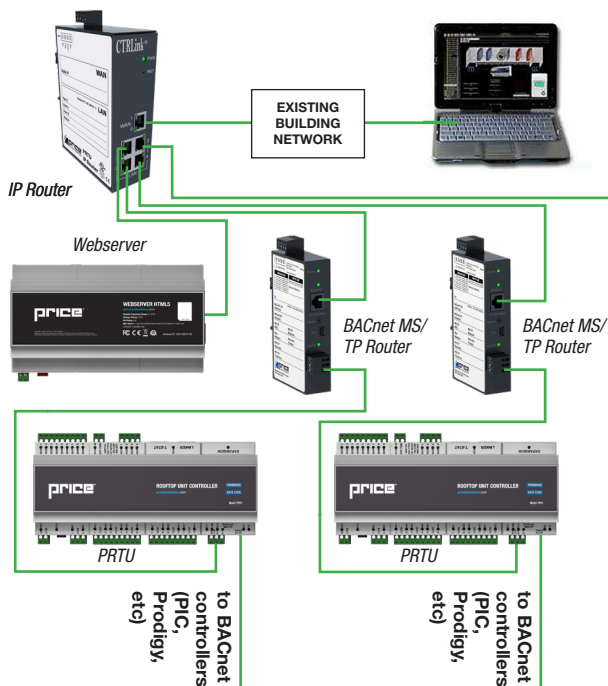
Quick Start Guide

Version 2.0

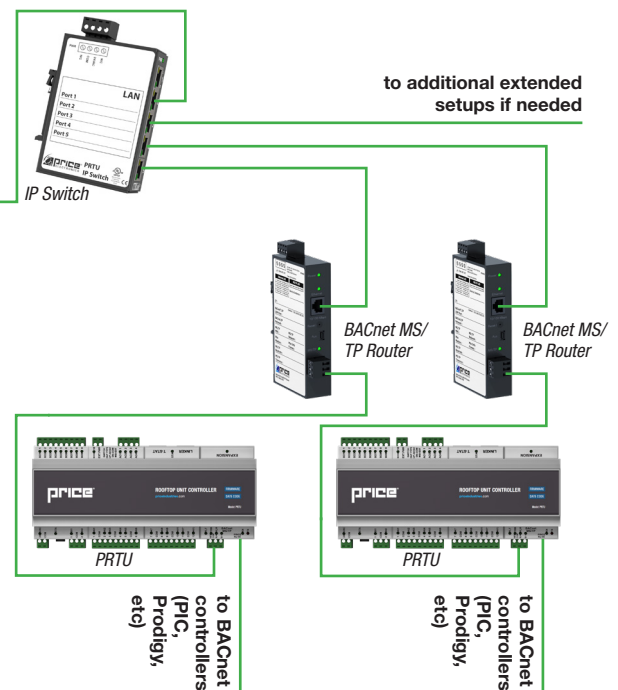
Step 1 Connect network components

Connect devices according to the number of PRTU controllers to be used (example setup shown below). **Mount the routers, switches and webserver together** and run communications wiring to each MS/TP segment (PRTU).

Basic Setup (1-3 PRTU Controllers)



Extended Setup (4-6 PRTU Controllers)



Default LAN IP: 192.168.97.1
Username: price
Password: price1999

Step 2 Configure IP Router

Connect the service laptop to a LAN port on the IP router and configure a static WAN IP as issued by the building IT department. Be sure to leave a copy of the IT request form with the router. See the PRTU-FRONT-END manual for details.

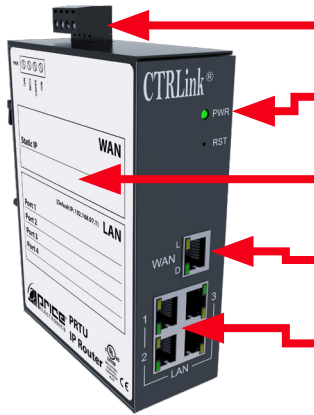


Quick Start Guide

Version 2.0

IP Router

PRTU-IP-RTR (250000-932)



Quick Disconnect Power Connector

24VAC (POLARITY CRITICAL- observe label)

Power LED

Indicates the unit is powered up

Writeable Label

Use to keep track of connected devices

WAN Port

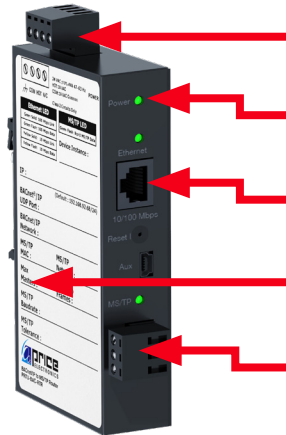
Connection to the existing building network

LAN Ports

Connections for other devices, such as the Price BACnet MS/TP Router and IP Switch

BACnet MS/TP Router

PRTU-BAC-RTR (250000-931)



Quick Disconnect Power Connector

24VAC (POLARITY CRITICAL- observe label)

Power LED

Indicates the unit is powered up

Ethernet Port

Connection to a LAN port on a Price IP Router or IP Switch

Writeable Label

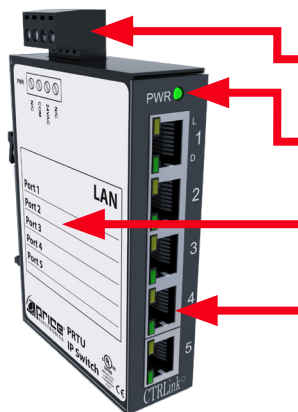
Use to keep track of connected devices

BACnet MS/TP Port

3-wire RS -485 connection to the building automation segment

IP Switch

PRTU-IP-SWITCH (250000-933)



Quick Disconnect Power Connector

24VAC (POLARITY CRITICAL- observe label)

Power LED

Indicates the unit is powered up

Writeable Label

Use to keep track of connected devices

LAN Ports

Connections for other devices, such as the Price BACnet MS/TP Router and IP Router

PRICE[®]

priceindustries.com

PRTU PRICE ROOFTOP
UNIT CONTROLLER

020023-010