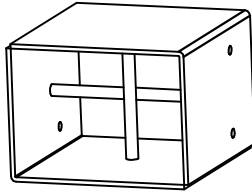
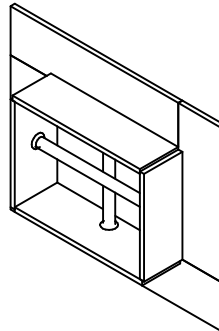


**MSBG - Security Barrier Bar Grille**

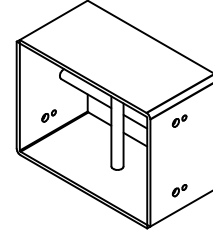
**MOUNTING:**



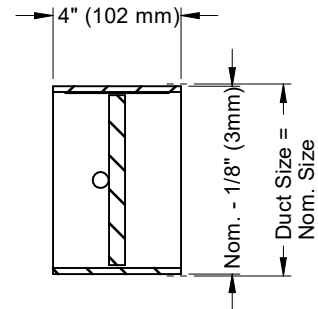
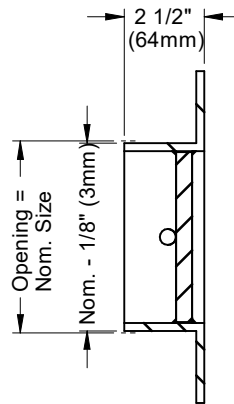
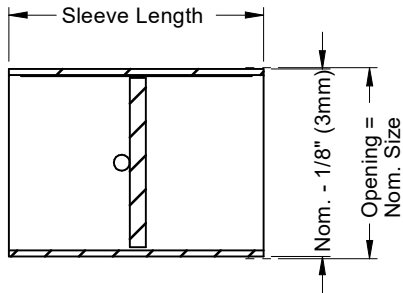
S187 - 3/16" (5mm) Sleeved Construction



F250 - 2 1/2" (64mm) Flange Frame



IT - Insert Type (For installation in a continuous duct section)



**MATERIAL:**

- Steel

**AVAILABLE SIZES:**

- Minimum size 6" x 6" (152mm x 152mm)
- Maximum 30" x 30" (762mm x 762mm)
- Fractional sizes available

**STANDARD FINISH:**

- B12 - Standard White

**OPTIONAL FINISHES:**

- Optional colors
- Custom colors

See finishes brochure for additional information.  
Contact your PRICE representative for leadtimes and pricing.



**NOTES:**

- Factory tolerance  $\pm 1/16"$  (2mm)

**FRAME / SLEEVE:**

- S187 - 3/16" (5mm) sleeve
    - Minimum 2" (51mm) length
    - Maximum 26" (660mm) length
    - Available in 1" (25mm) increments
    - Sleeve length approximately 4" (102mm) larger than wall thickness is recommended to allow for mounting angles and duct connection
  - F250 - 2 1/2" x 2 1/2" x 1/4" (64mm x 64mm x 6mm) flanged frame
  - IT - 3/16" (5mm) x 4" (102mm) sleeve with 1/4" (6mm) mounting holes to install in and fasten to existing duct section.
- Frame / sleeve welds:
- Stitch welded (standard)
  - CWS - Continuously welded seams

ALL METRIC DIMENSIONS ( ) ARE SOFT CONVERTED. IMPERIAL DIMENSIONS ARE CONVERTED TO METRIC AND ROUNDED TO THE NEAREST MILLIMETER.

<b>PROJECT:</b>		 <b>MSBG</b> SECURITY BARRIER BAR GRILLE
<b>ENGINEER:</b>		
<b>CUSTOMER:</b>		
<b>SUBMITTAL DATE:</b>		
<b>SPEC. SYMBOL:</b>		 275821
		FEB. 2024

**MSBG - Security Barrier Bar Grille**

**BARRIER BAR OPTIONS:**

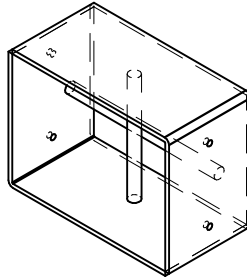
**Round Bar Style:**

Vertical bars on max. 6" (152mm) spacing and horizontal bars on max. 12" (305mm) spacing:

- BB16 - 1/2" (13mm) dia. bars
- BB17 - 3/4" (19mm) dia. bars

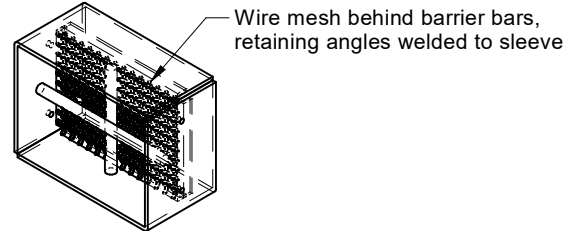
Vertical and horizontal bars on max. 6" (152mm) spacing:

- BB26 - 1/2" (13mm) dia. bars
- BB27 - 3/4" (19mm) dia. bars



**WIRE MESH (OPTIONAL):**

- WM - 10 ga. Wire mesh, 3/8" (10mm) clear opening (Requires min. 4" (102mm) sleeve. Min. 6" (152mm) sleeve with BB22. Not available with F250 frame option.)

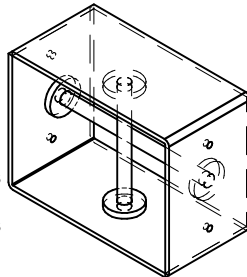


**Socketed Bar Style:**

Vertical bars on max. 6" (152mm) spacing, horizontal bars on max. 12" (305mm) spacing

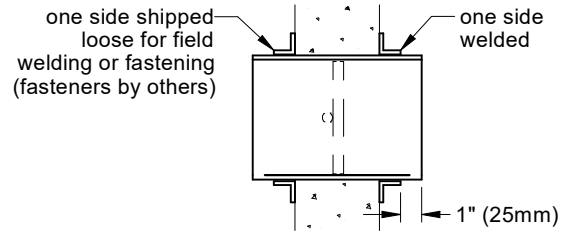
- BB19 - 1/2" (13mm) dia. hardened bars in sockets
- BB20 - 3/4" (19mm) dia. hardened bars in sockets

(BB19 and BB20 not available with 2" (51mm) sleeve length)



**FASTENING OPTIONS:**

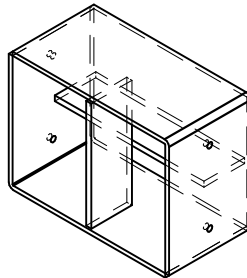
- Angle frames, two sets - one side welded to sleeve, one side loose for field installation:
  - MF1x2 - 1" x 1" x 3/16" (25mm x 25mm x 5mm)
  - MF2x2 - 1 1/2" x 1 1/2" x 3/16" (38mm x 38mm x 5mm)
  - MF3x2 - 1" x 1" x 1/8" (25mm x 25mm x 3mm)
  - MF4x2 - 1 1/2" x 1 1/2" x 1/8" (38mm x 38mm x 3mm)
 (angles require minimum 8" (203mm) sleeve length, angle frames not available with F250 or IT frame options)



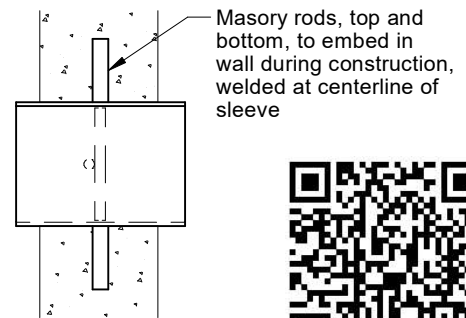
**Flat Bar Style:**

Vertical bars on max. 6" (152mm) spacing, horizontal bars on max. 12" (305mm) spacing

- BB22 - 2" x 1/4" (51mm x 6mm) flat bars (min. 4" (102mm) sleeve length, not available with F250 frame)



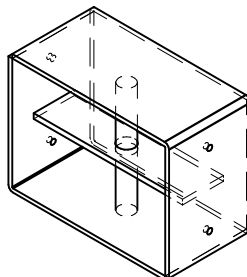
- MR6 - 3/4" x 3" (19mm x 76mm) Masonry rods, welded on top and bottom of sleeve, maximum 12" (305mm) on center spacing (not available with IT frame)



**Interlocking Style:**

Vertical bars on max. 6" (152mm) spacing, horizontal bars on max. 12" (305mm) spacing

- BB23 - 3/4" (19mm) dia. vertical round bars through 2" x 1/4" (51mm x 6mm) horizontal flat bars



Scan for link to additional product information.

ALL METRIC DIMENSIONS ( ) ARE SOFT CONVERTED. IMPERIAL DIMENSIONS ARE CONVERTED TO METRIC AND ROUNDED TO THE NEAREST MILLIMETER.

<b>PROJECT:</b>		<b>PRICE</b>
<b>ENGINEER:</b>		
<b>CUSTOMER:</b>		<i>MS</i>
<b>SUBMITTAL DATE:</b>		<b>275821</b>
<b>SPEC. SYMBOL:</b>		<b>FEB. 2024</b>
		<b>MSBG SECURITY BARRIER BAR GRILLE</b>