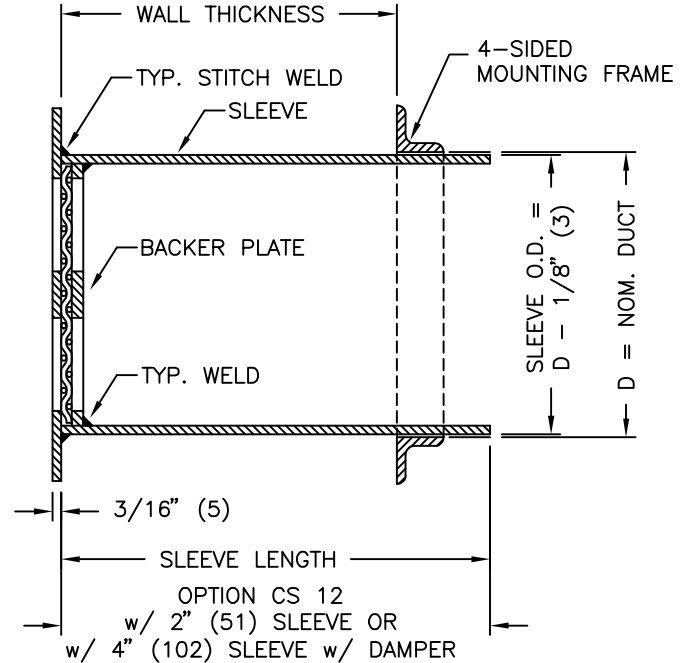
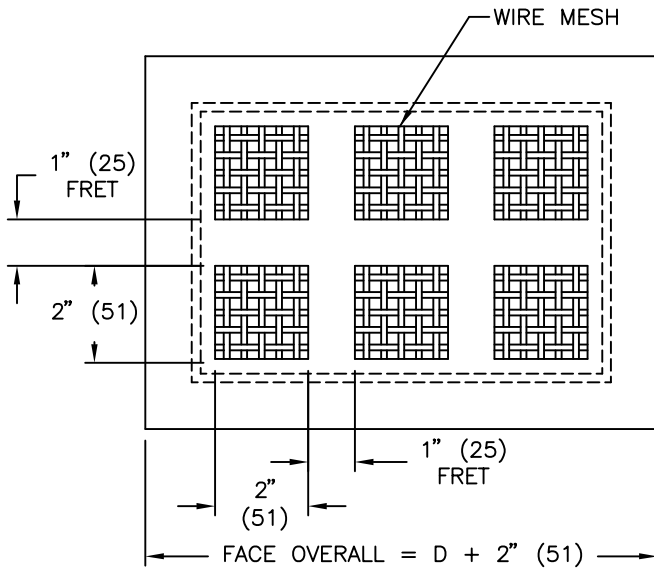


MSLG - MAXIMUM SECURITY LATTICE GRILLE



STANDARD CONSTRUCTION:

(CONSTRUCTION PER ASTM STANDARDS)

FACE PLATE:

FP187 3/16" (5) HOT ROLLED STEEL (HRS)
2" (51) SQ. HOLES WITH 1" (25) FRET (PATTERN L1)

OPTIONS:

- FP250 1/4" (6)
- FP10 10 GA.
- FP12 12 GA.

FACE PLATE PATTERNS: (PATTERNS NOT AVAILABLE WHERE MATERIAL THICKNESS EXCEEDS FRET SIZE)

- L2: 1 1/2" (38) SQ. HOLES, 1/2" (13) FRET
- L3: 1" (25) SQ. HOLES, 1/4" (6) FRET
- L4: 13/16" (21) SQ. HOLES, 3/16" (5) FRET
- L5: 3/4" (19) SQ. HOLES, 1/4" (6) FRET
- L6: 9/16" (14) SQ. HOLES, 3/16" (5) FRET
- L7: 1/2" (13) SQ. HOLES, 3/16" (5) FRET

BACKER PLATE:

BP 1/4" (6) HRS, MATCHING FACE PLATE PATTERN

OPTIONS:

- BP187 3/16" (5)
- BP10 10 GA.
- BP12 12 GA.
- BPHS 1/4" HARDENED STEEL

WIRE MESH:

WM 10 GA. x 3/8" (10) CLEAR OPENING STEEL WIRE MESH

SLEEVE:

S187 3/16" (5) HRS, LENGTH AS REQUIRED, STITCH WELDED SEAMS

OPTIONS:

- S250 1/4" (6)
- S10 10 GA.
- S12 12 GA.
- CWS CONTINUOUSLY WELDED SEAMS
- OPTION S5 (NOT AVAILABLE WITH MOUNTING FRAME - MF)

4-SIDED MOUNTING FRAME:

MF1 1" x 1" x 3/16" (25 x 25 x 5) HRS ANGLE
(SHIPPED LOOSE FOR FIELD WELDING)

OPTIONS:

- MF2
- MF3
- MF4

ALL METRIC DIMENSIONS () ARE SOFT CONVERTED. IMPERIAL DIMENSIONS ARE CONVERTED TO METRIC AND ROUNDED TO THE NEAREST MILLIMETER.

OPTIONS & ACCESSORIES:

MATERIAL: (ONLY AVAILABLE IN 10 GA. CONSTRUCTION)

- ALL ALUMINUM (MINIMUM SECURITY)
- ALL 304 STAINLESS STEEL

FASTENING METHOD OPTIONS:

- MR6
- MR7
- CS 12 SPNR
- CS 12 TORX
- CS 12 SPNR-SS
- CS 12 TORX-SS

DAMPER OPTIONS:

- 3BF
- 3BR

BARRIER BAR STYLE OPTIONS:

- BB16
- BB17
- BB18
- BB19
- BB20
- BB21
- BB22
- BB23

NOTES:

- BARRIER BARS AND MOUNTING FRAMES ARE NOT AVAILABLE WITH OPTION CS 12
- MINIMUM SIZE = 6" x 6" (152 x 152)
- MAXIMUM SIZE = 30" x 30" (762 x 762)
- FACTORY TOLERANCE ±1/32" (1)
- SLEEVE LENGTH MUST BE SPECIFIED ON ORDER
- REFER TO SUBMITTAL 233035 FOR OPTIONS
- CONSULT FACTORY FOR SPECIAL OPTIONS

FINISH:

- B12 WHITE
(OPTIONAL FINISHES AVAILABLE)

PROJECT:		PRICE [®]	
ENGINEER:		<i>MG</i>	MSLG MAXIMUM SECURITY LATTICE GRILLE
CUSTOMER:		233037	
SUBMITTAL DATE:	SPEC. SYMBOL:	2013/10/21	