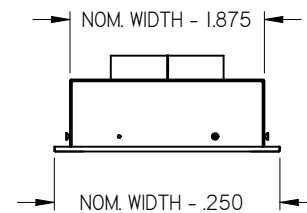
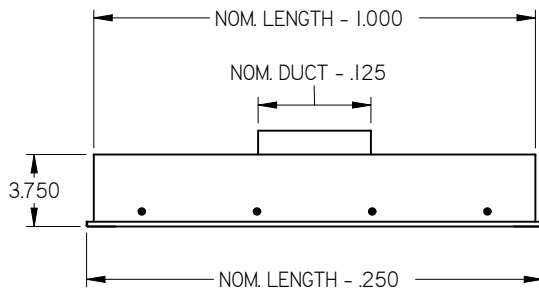
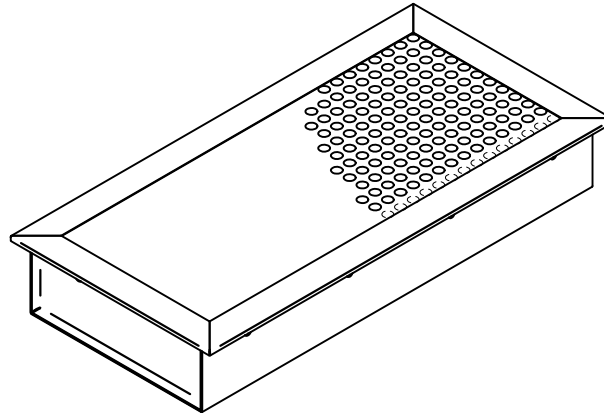


DF1L - 1-WAY LAY-IN DISPLACEMENT DIFFUSER



OPTIONS & ACCESSORIES:

- ☐ AFI: 1/2" ALUMINUM FOIL INSULATION
- ☐ AFSD: AIR FLOW SENSING DAMPER
- ☐ ALL ALUMINUM CONSTRUCTION
- ☐ STAINLESS STEEL FACE

STANDARD CONSTRUCTION:

- PERFORATED FACE - 18 GA. STEEL
- FRAME - 20 GA. STEEL
- PLENUM - 24 GA. STEEL

FINISH:

- ☐ B12 WHITE (FACE)
- (OPTIONAL FINISHES AVAILABLE)

NOTES:

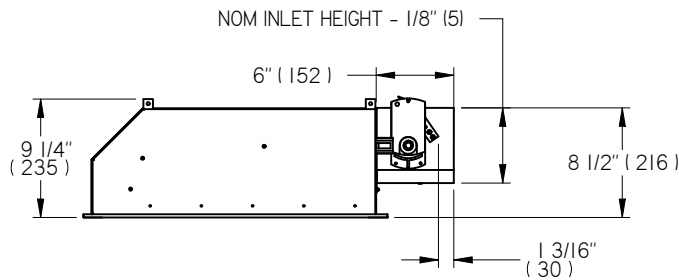
- FACTORY TOLERANCE +/- 1/32" (1)
- ALL UNITS COME WITH INTERNAL BAFFLE
- SEE INSTALLATION MANUAL I100001

Available Sizes				
Nom. W x L		Inlet		
12 x 24 (305 x 610)		6	8	
24 x 24 (610 x 610)		8	10	12
12 x 48 (305 x 1219)		6	8	
24 x 48 (610 x 1219)		8	10	12
24 x 72 (610 x 1829)		8	10	12 14

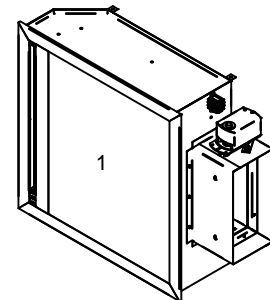
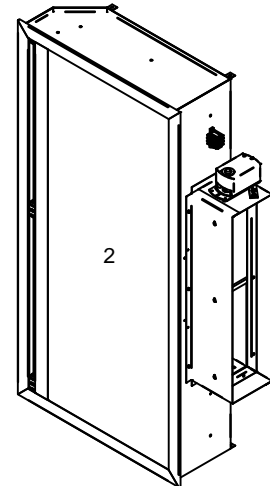
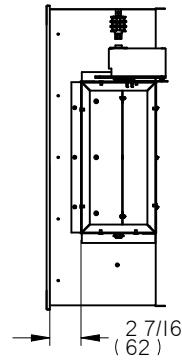
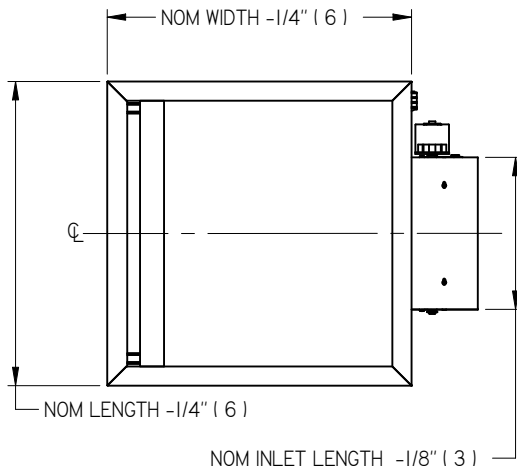
ALL METRIC DIMENSIONS () ARE SOFT CONVERTED. IMPERIAL DIMENSIONS ARE CONVERTED TO METRIC AND ROUNDED TO THE NEAREST MILLIMETER.

PROJECT:		PRICE		
			DF1L 1-WAY LAY-IN DISPLACEMENT DIFFUSER	
ENGINEER:				
CUSTOMER:				
SUBMITTAL DATE:	SPEC. SYMBOL:	SEPT 2010		

DF1L-HC - 1 WAY LAY-IN HEAT/COOL DISPLACEMENT DIFFUSER



ELECTRIC ACTUATOR (EA) OPTION SHOWN IN ALL VIEWS



OPTIONS & ACCESSORIES:

- ☐ AFI: 1/2" ALUMINUM FOIL INSULATION
- ☐ AFSD: AIR FLOW SENSING DAMPER
- ☐ ELECTRIC ACTUATOR (EA) 24V FLOATING
- ☐ THERMAL ACTUATOR (TA)

STANDARD CONSTRUCTION:

- PERFORATED FACE - 18 GA. STEEL
- FRAME - 20 GA. STEEL
- PLENUM - 24 GA. STEEL

FINISH:



- ☐ B12 WHITE (FACE)
- (OPTIONAL FINISHES AVAILABLE)

NOTES:

- FACTORY TOLERANCE +/- 1/16" (2)
- FACTORY MOUNTED ACTUATOR
- ALL UNITS COME WITH INTERNAL BAFFLE
- SEE INSTALLATION MANUAL I100010

Available Sizes		
ASSY CONFIG	NOM. LENGTH x WIDTH	NOM. INLET LENGTH x HEIGHT
1	24 x 24 (610 x 610)	12 x 6 (305 x 152)
2	48 x 24 (1219 x 610)	24 x 6 (610 x 152)

ALL METRIC DIMENSIONS () ARE SOFT CONVERTED. IMPERIAL DIMENSIONS ARE CONVERTED TO METRIC AND ROUNDED TO THE NEAREST MILLIMETER.

PROJECT:		  25009I JULY 2011	DF1L-HC 1 WAY LAY-IN HEAT/COOL DISPLACEMENT DIFFUSER
ENGINEER:			
CUSTOMER:			
SUBMITTAL DATE:	SPEC. SYMBOL:		