

ISOLATION-READY PATIENT ROOMS

Easily Change From Normal Operation to Isolation Room Mode

Traditionally hospitals are built with very few negative pressure isolation rooms as these spaces are seldom used and are more expensive to build and operate than standard patient rooms. The CARES is a critical component of the isolation-ready patient room solution from Price and Antec Controls that allows a hospital to build one room that can operate with the air distribution requirements of a standard patient room or a negative pressure isolation room. Conversion of the air distribution system to a negative pressure isolation room at the touch of a button eliminates the need for time consuming and unsightly field modifications in response to increased demand for isolation spaces.



ROOM REQUIREMENTS

ASHRAE Standard 170-2021 Ventilation of Health Care Facilities dictates the following requirements for standard patient rooms and isolation rooms. In the proposed isolation-ready layouts on the following pages “Normal Operation” aligns with the ASHRAE Standard 170 air distribution requirements for “Standard Patient Rooms” while “Isolation Mode” aligns with the operational requirements of an “Airborne Infectious Isolation Room”.

Standard Patient Room

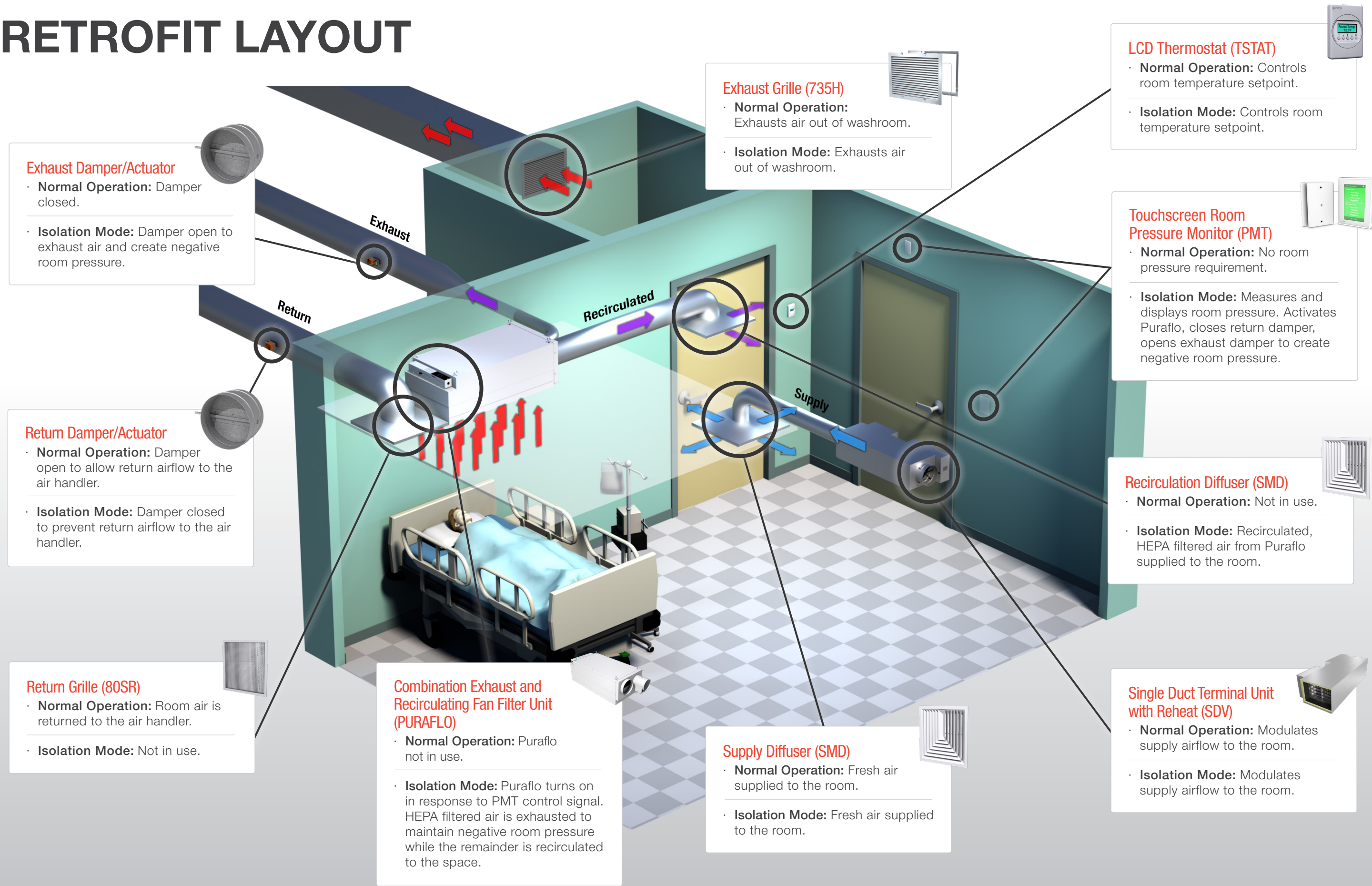
| | |
|-----------------------|---------------------------------------|
| Airflow – Fresh | 2 ACH |
| Airflow – Total | 4 ACH |
| Pressure Differential | No requirement. |
| Exhaust | Washroom exhaust. |
| Return | Room return grille located near door. |
| Recirculation | Allowed. |
| Supply Diffuser | Not specified. |

Airborne Infectious Isolation Room

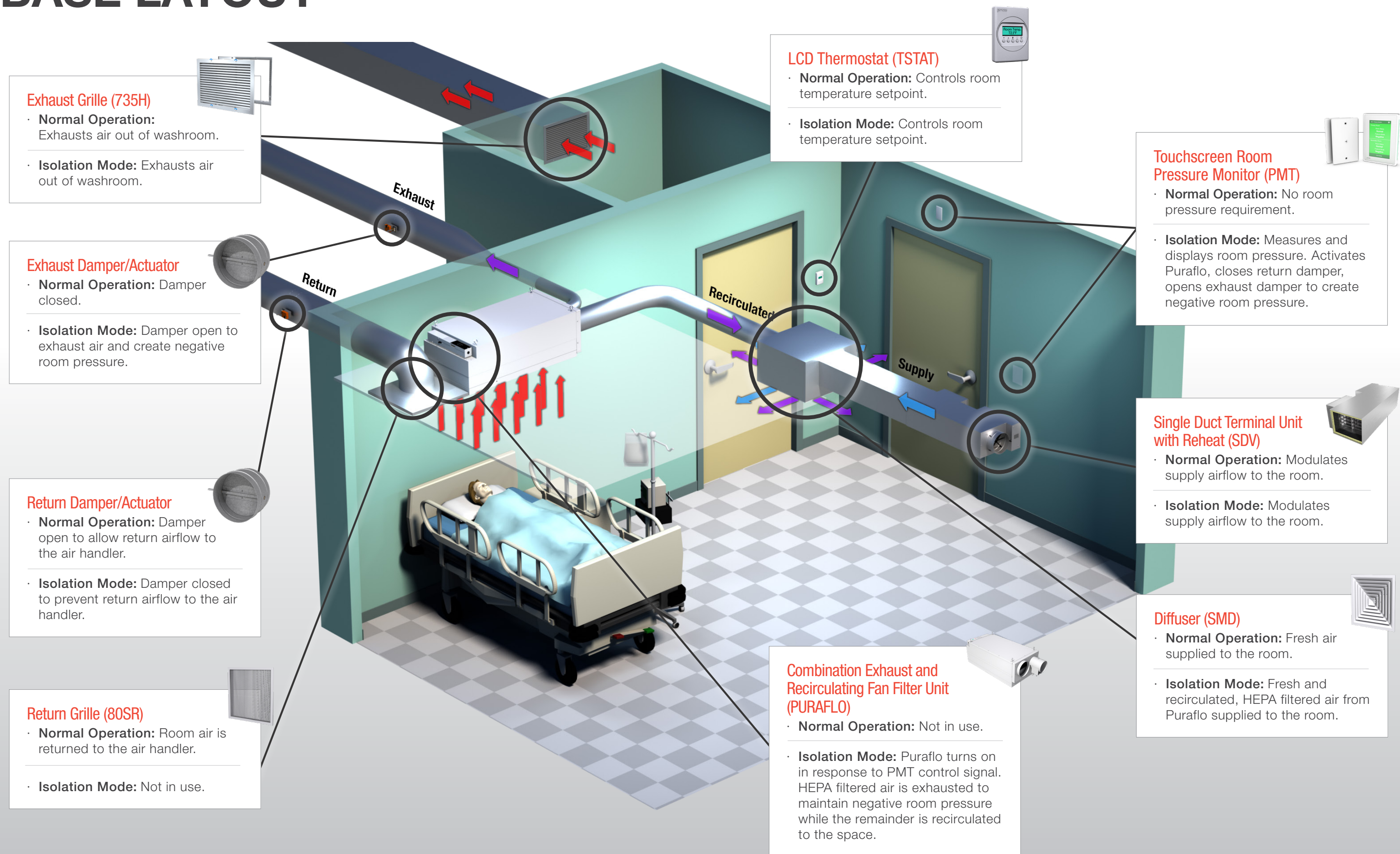
| | |
|-----------------------|---|
| Airflow – Fresh | 2 ACH |
| Airflow – Total | 12 ACH |
| Pressure Differential | Negative 0.01 in. w.g. pressure monitor required. |
| Exhaust | Washroom Exhaust. Room exhaust located near patient head. |
| Return | Return not allowed. |
| Recirculation | Only allowed if room air is recirculated locally through a HEPA filter. |
| Supply Diffuser | Air moves from clean to less-clean. |



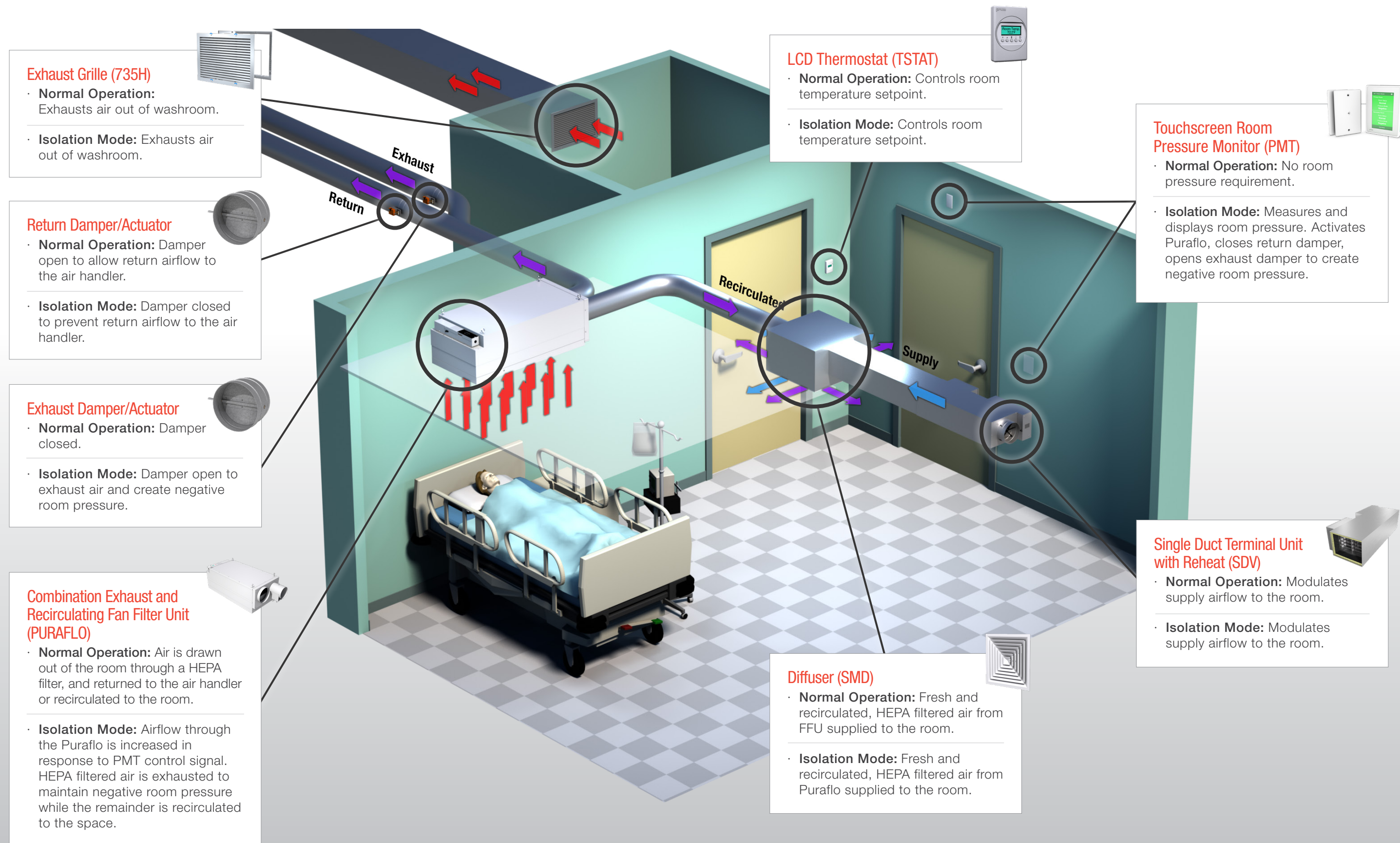
RETROFIT LAYOUT



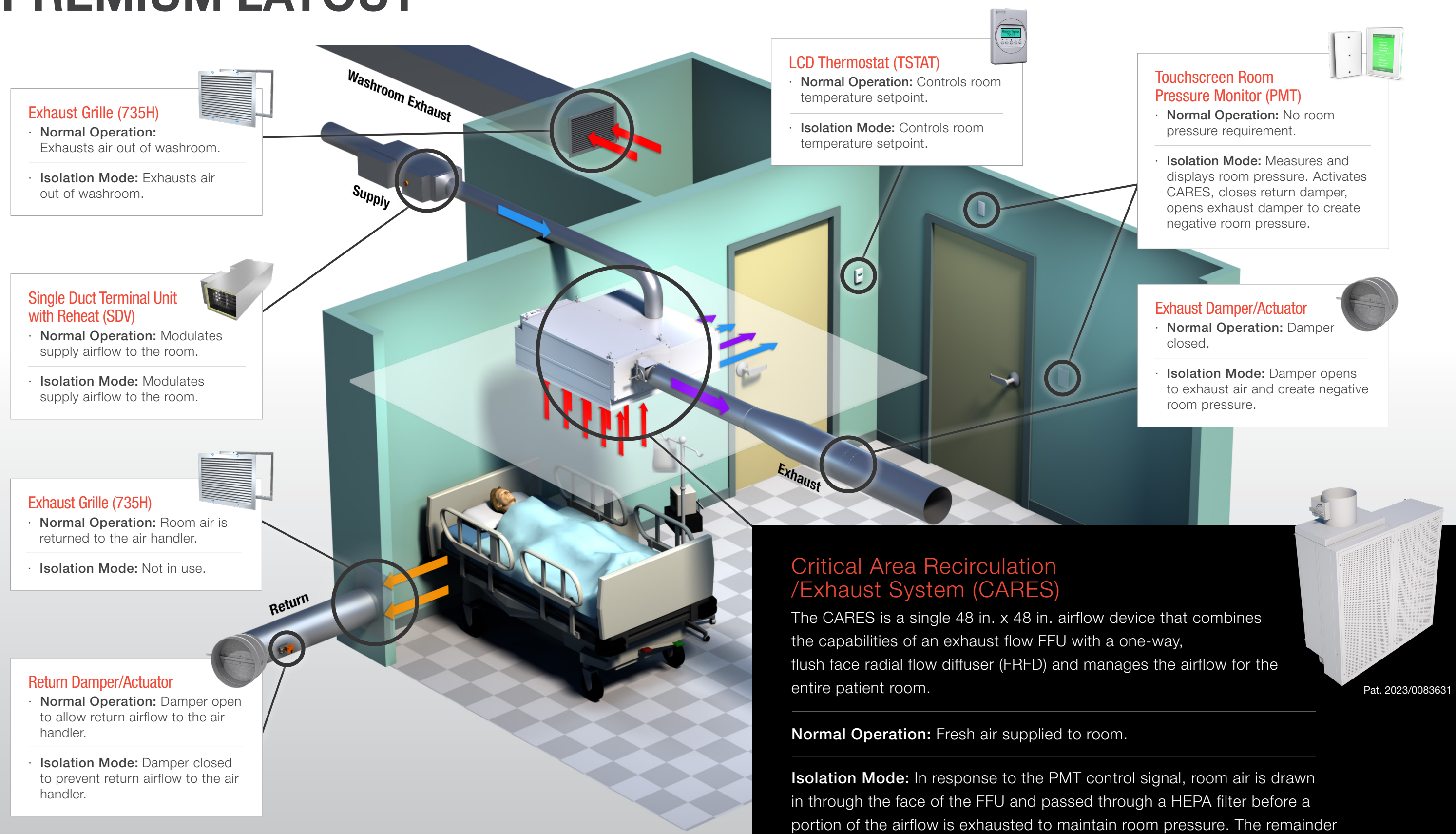
BASE LAYOUT



DELUXE LAYOUT



PREMIUM LAYOUT



EQUIPMENT

RETROFIT LAYOUT



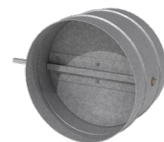
Combination Exhaust and Recirculating Fan Filter Unit

PURAFLO-1-2//I/CEILING/DUAL-OUTLET/24/48/10/8/RSR/HEPA-2/FC/ECM/115/CF/RMB/BACnet/BFC/TC//DSW-115//ASSP/M8PFE/PL-AL/F-AL/PL-B12/F-B12



Touchscreen Room Pressure Monitor

PMT-1-4//I//SRPS1/BAC/



Dampers/Actuators

Return: MISCF_GRD_CE/S//PURAFLO-1-X/RET/12/24V

Exhaust: MISCF_GRD_CE/S//PURAFLO-1-X/EX/12/24V



Single Duct Terminal Unit with Reheat & LCD Thermostat



Exhaust Grille

735H//I/24.000/16.000/F/S/////#4



Return Grille

80SR//I/24/24//I2//TOP/12/BN///B12



Supply Diffuser

SMD//I/18/18/36/3A/24/24/SR/12//B12



Recirculating Diffuser

SMD//I/18/18/36/3A/24/24/SR/12//B12

BASE LAYOUT



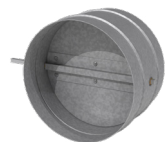
Combination Exhaust and Recirculating Fan Filter Unit

PURAFLO-1-2//I/CEILING/DUAL-OUTLET/24/48/10/8/RSR/HEPA-2/FC/ECM/115/CF/RMB/BACnet/BFC/TC//DSW-115//ASSP/M8PFE/PL-AL/F-AL/PL-B12/F-B12



Touchscreen Room Pressure Monitor

PMT-1-4//I//SRPS1/BAC/



Dampers/Actuators

Return: MISCF_GRD_CE/S//PURAFLO-1-X/RET/12/24V

Exhaust: MISCF_GRD_CE/S//PURAFLO-1-X/EX/12/24V



Single Duct Terminal Unit with Reheat & LCD Thermostat



Exhaust Grille

735H//I/24.000/16.000/F/S/////#4



Return Grille

80SR//I/24/24//I2//TOP/12/BN///B12



Supply Diffuser

SMD//I/18/18/36/3A/24/24/SR/12//B12

RECIRCULATING DIFFUSER NOT REQUIRED

DELUXE LAYOUT



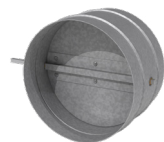
Combination Exhaust and Recirculating Fan Filter Unit

PURAFLO-1-2//I/CEILING/DUAL-OUTLET/24/48/10/8/RSR/HEPA-2/FC/ECM/115/CF/RMB/BACnet/BFC/TC//DSW-115//ASSP/M8PFE/PL-AL/F-AL/PL-B12/F-B12



Touchscreen Room Pressure Monitor

PMT-1-4//I//SRPS1/BAC/



Dampers/Actuators

Return: MISCF_GRD_CE/S//PURAFLO-1-X/RET/12/24V

Exhaust: MISCF_GRD_CE/S//PURAFLO-1-X/EX/12/24V



Single Duct Terminal Unit with Reheat & LCD Thermostat



Exhaust Grille

735H//I/24.000/16.000/F/S/////#4



Supply Diffuser

SMD//I/18/18/36/3A/24/24/SR/12//B12

RETURN GRILLE NOT REQUIRED

RECIRCULATING DIFFUSER NOT REQUIRED

PREMIUM LAYOUT



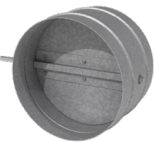
Critical Area Recirculation/Exhaust System (CARES)

CARES-1-1//I/48/48/10/10/RSR/HEPA-2/FC/ECM/115/CF/RMB/BACnet/BFC/NONE/TC/DSW-115//ASSP/M8PFE/PL-AL/F-AL/PL-B12/F-B12



Touchscreen Room Pressure Monitor

PMT-1-4//I//SRPS1/BAC/



Dampers/Actuators

Return: MISCF_GRD_CE/S//CARES-1-X/RET/12/24V

Exhaust: MISCF_GRD_CE/S//CARES-1-X/EX/12/24V



Single Duct Terminal Unit with Reheat & LCD Thermostat



Exhaust Grille

735H//I/24.000/16.000/F/S/////#4



Return Grille

735H//I/24.000/16.000/F/S/////#4

SUPPLY DIFFUSER NOT REQUIRED

RECIRCULATING DIFFUSER NOT REQUIRED

priceindustries.com

UNITED STATES

2975 Shawnee Ridge Court
Suwanee, Georgia USA 30024

PH: 770.623.8050 FAX: 770.623.6404

CANADA

638 Raleigh Street
Winnipeg, Manitoba Canada R2K 3Z9

PH: 204.669.4220 FAX: 204.663.2715

Product Improvement is a continuing endeavour at Price. Therefore, specifications are subject to change without notice. Consult your Price Sales Representative for current specifications or more detailed information. Not all products may be available in all geographic areas. All goods described in this brochure are warranted as described in the Limited Warranty shown at priceindustries.com. The complete Price product catalog can be viewed online at priceindustries.com.

® Price is a registered trademark of Price Industries Limited. © 2023. Printed in Canada. | v000

PRICE[®]

The Science of Comfort[™]