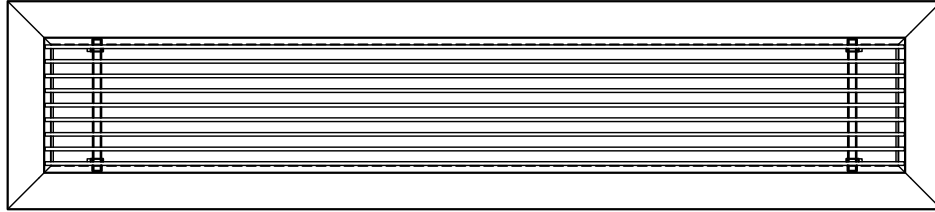


LBMH - LINEAR BAR GRILLES (MANDREL TUBE)



CORE STYLES

1/4" SPACING	1/2" SPACING		7/16" SPACING PENCIL PROOF
1/8" BARS	1/8" BARS	7/32" BARS	7/32" BARS
<p>□ 15A</p>	<p>□ 15B</p>	<p>□ 25B</p>	<p>□ 25C</p> <p>PENCIL PROOF</p>
<p>□ 16A</p> <p>15° DEFLECTION</p>	<p>□ 16B</p> <p>15° DEFLECTION</p>	<p>□ 26B</p> <p>15° DEFLECTION</p>	<p>□ 26C</p> <p>15° DEFLECTION PENCIL PROOF</p>
		<p>□ 27B</p> <p>30° DEFLECTION</p>	<p>□ 27C</p> <p>30° DEFLECTION PENCIL PROOF</p>

NOTES:

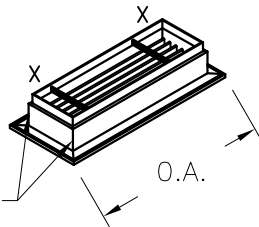
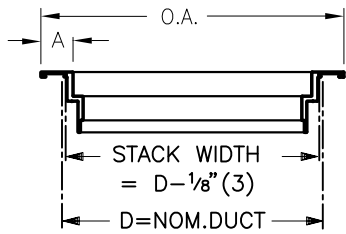
- EXTRUDED ALUMINUM CONSTRUCTION.
- B12 WHITE (OPTIONAL FINISHES AVAILABLE)
- BARS ARE PARALLEL TO LONG DIMENSION (STANDARD CONSTRUCTION)
- CORE FIXED IN PLACE WITH CORE CLIPS
- MAXIMUM SECTION LENGTH IS 72"(1829).
- SECTIONS CAN BE JOINED FOR CONTINUOUS APPEARANCE.
- SCREW MOUNTING HOLES PER FACTORY STD.
- FACTORY TOLERANCE: ± 1/32" (1).
- MAXIMUM NOMINAL WIDTH WITH DV1 BLADES IS 12"(305).
- MAX. SINGLE UNIT WIDTH IS 48"(1219).
- MAX. WIDTH 30"(762) FOR CORE ONLY.
- UNITS WIDER THAN 24"(610) REQUIRE ADDITIONAL STRUCTURAL SUPPORT DESIGNED AND INSTALLED BY OTHERS.
- LBMH IS NOT DESIGNED TO WITHSTAND LOADS FROM MECHANICAL EQUIPMENT SUCH AS CARTS, FORKLIFTS, ETC.
- CORE ONLY REQUIRES ADDITIONAL STRUCTURAL SUPPORT BY OTHERS.

ALL METRIC DIMENSIONS () ARE SOFT CONVERTED. IMPERIAL DIMENSIONS ARE CONVERTED TO METRIC AND ROUNDED TO THE NEAREST MILLIMETER.

PROJECT:		PRICE®	
ENGINEER:		<i>MG</i>	LBMH LINEAR BAR GRILLES MANDREL TUBE CONSTRUCTION
CUSTOMER:		210586	
SUBMITTAL DATE:	SPEC. SYMBOL:	2016/12/14	

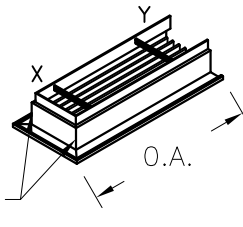
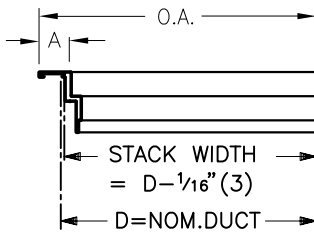
END CONDITION

X - X MITRED END
MITRED BOTH ENDS



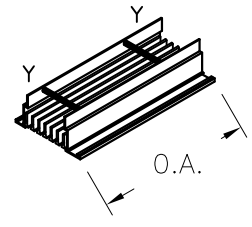
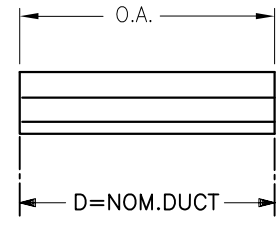
WELD BUILD-UP
MAX. 1/16" (2)
AT CORNERS

X - Y MITRED - OPEN END
ONE MITRED, ONE OPEN END



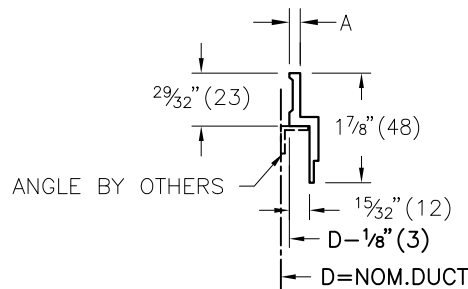
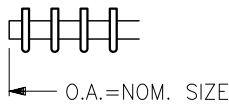
WELD BUILD-UP
MAX. 1/16" (2)
AT CORNERS

Y - Y OPEN END
OPEN ENDS FOR SPLICING

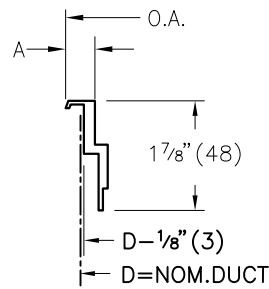


BORDER OPTIONS

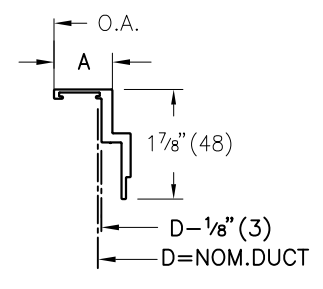
CORE ONLY



125
 187



500



1250
 1000
 750

BORDER STYLE	BORDER WIDTH (A)	OVERALL (O.A.) X-X	OVERALL (O.A.) X-Y	OVERALL (O.A.) Y-Y
<input type="checkbox"/> 1250	1 1/4" (32)	D + 2" (51)	D + 1" (25)	NOM. DUCT
<input type="checkbox"/> 1000	1" (25)	D + 1 1/2" (38)	D + 3/4" (19)	NOM. DUCT
<input type="checkbox"/> 750	3/4" (19)	D + 1" (25)	D + 1/2" (13)	NOM. DUCT
<input type="checkbox"/> 500	1/2" (13)	D + 5/16" (8)	D + 5/32" (4)	NOM. DUCT
<input type="checkbox"/> 125	1/8" (3)	D - 1/8" (3)	D - 1/16" (1)	NOM. DUCT
<input type="checkbox"/> 187	3/16" (5)	D - 1/8" (3)	D - 1/16" (1)	NOM. DUCT
<input type="checkbox"/> CORE ONLY	N/A	NOM. DUCT	NOM. DUCT	NOM. DUCT

ALL METRIC DIMENSIONS () ARE SOFT CONVERTED. IMPERIAL DIMENSIONS ARE CONVERTED TO METRIC AND ROUNDED TO THE NEAREST MILLIMETER.

PROJECT:



ENGINEER:

MG

CUSTOMER:

210586

SUBMITTAL DATE:

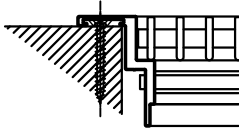
SPEC. SYMBOL:

2016/12/14

LBMH
LINEAR BAR GRILLES
MANDREL TUBE
CONSTRUCTION

FASTENING

A - COUNTERSUNK SCREW

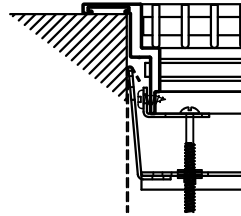


- FOR CEILING, WALL, & SILL APPLICATION. AVAILABLE WITH BORDERS 1000,1250

H - STRAIGHT HOLES

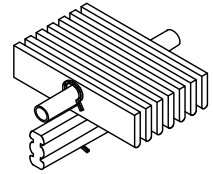
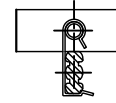
AVAILABLE ON 750 FRAME.

C - CONCEALED MTG BRKT



- FOR CEILING, SIDEWALL, FLOOR OR SILL APPLICATIONS. WITH CORE STYLES 15A, 16A, 26C OR 27C REMOVE CORE FOR ACCESS TO CONCEALED BRACKET.
- MAXIMUM WIDTH - 24" (610)

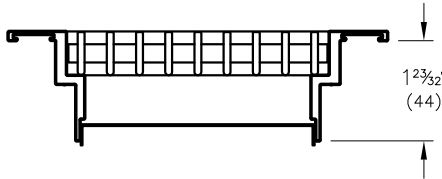
CORE CLIPS



- CORE CLIPS ARE SUPPLIED STANDARD ON ALL LBMH GRILLES

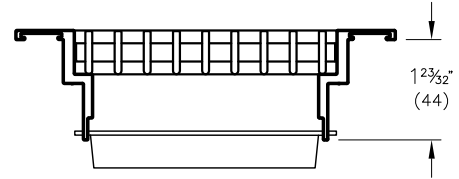
ACCESSORIES

BOS - BLANK OFF SECTIONS



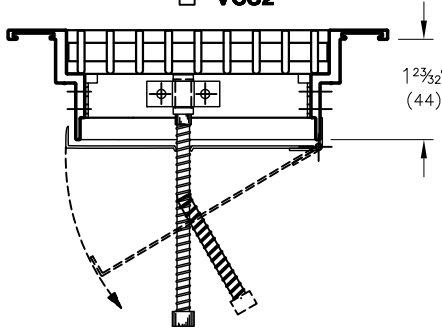
INACTIVE SECTION c/w BLANK OFF

DV1 - DIRECTIONAL VANES



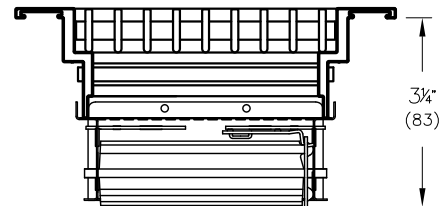
DV1 STRAIGHTENING VANES 1" O.C.
MIN. WIDTH 2"
MAX. WIDTH 12"

VCS2



VCS2 FLAP DAMPER SCREW DRIVER OPERATOR ON 3" (76) THROUGH 8" (203). FRICTION HINGE ON 1 1/2" (38) THROUGH 2 1/2" (64)

VCS3



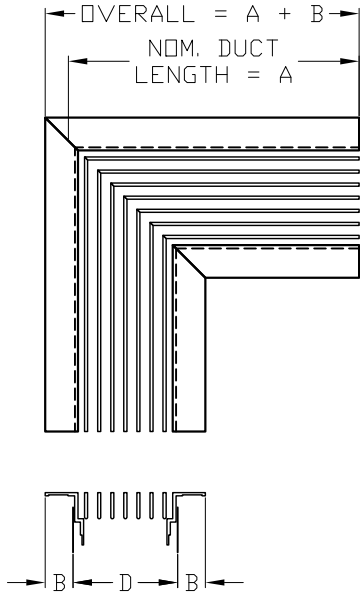
VCS3 OPPOSED BLADE DAMPER
MIN. DAMPER WIDTH = 2 1/2" (64)
MIN. DAMPER WIDTH = 3" (76) (FRAMES 125 & 187)

ALL METRIC DIMENSIONS () ARE SOFT CONVERTED. IMPERIAL DIMENSIONS ARE CONVERTED TO METRIC AND ROUNDED TO THE NEAREST MILLIMETER.

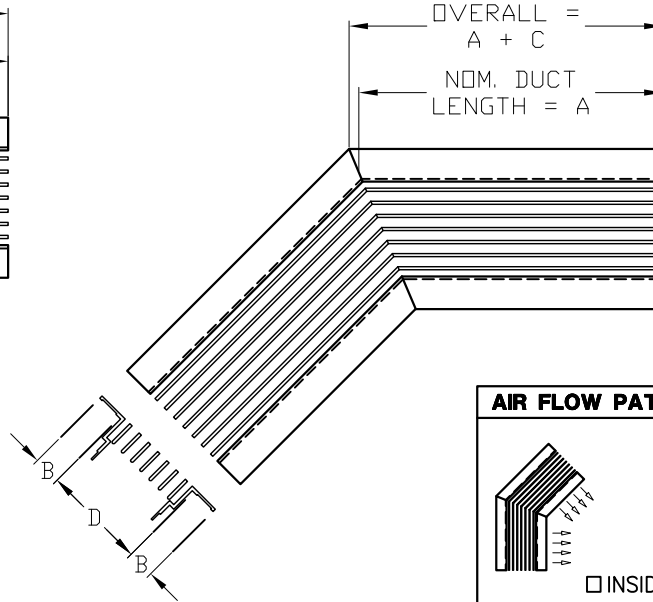
PROJECT:		PRICE®	
ENGINEER:			
CUSTOMER:		210586	
SUBMITTAL DATE:	SPEC. SYMBOL:	2016/12/14	

MC90, MC135, MCSI AND MCSO MITRED CORNERS FOR LBMH

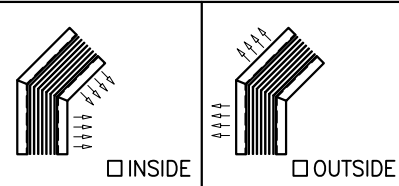
☐ **MC90** - 90° MITRED CORNER



☐ **MC135** - 135° MITRED CORNER



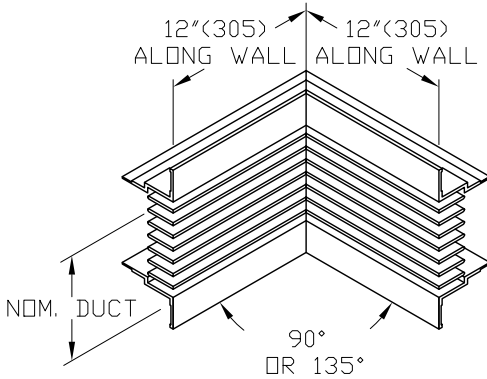
AIR FLOW PATTERN (135 SHOWN)



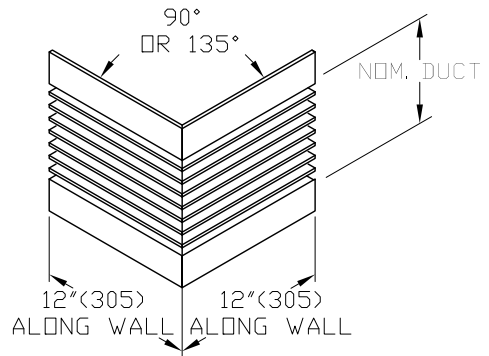
D = NOM. DUCT WIDTH	A
LARGER THAN 8" (203) TO 14" (356)	18" (457)
EQUAL TO OR LESS THAN 8" (203)	12" (305)

FRAME TYPE	B	C
1250	1" (25)	7/16" (11)
1000	3/4" (19)	5/16" (8)
750	1/2" (13)	7/32" (6)
500	5/32" (4)	1/16" (2)
187	-1/16" (2)	-3/32" (1)
125	-1/16" (2)	-3/32" (1)

☐ **MCSI** - MITRED CORNER SIDEWALL INSIDE



☐ **MCSO** - MITRED CORNER SIDEWALL OUTSIDE



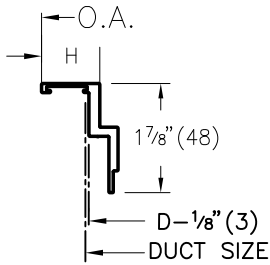
ALL METRIC DIMENSIONS () ARE SOFT CONVERTED. IMPERIAL DIMENSIONS ARE CONVERTED TO METRIC AND ROUNDED TO THE NEAREST MILLIMETER.

PROJECT:		PRICE®
ENGINEER:		
CUSTOMER:		266984
SUBMITTAL DATE:	SPEC. SYMBOL:	2016/07/05

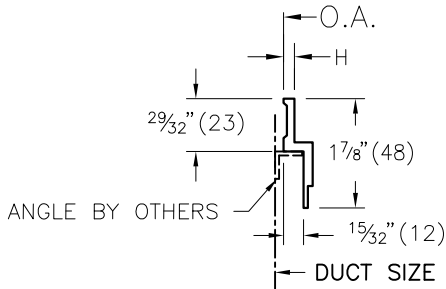
MC-LBMH
MITRED CORNER
LINEAR GRILLES
FOR LBMH

MC90, MC135, MCSI AND MCSO MITRED CORNERS FOR LBMH

BORDER OPTIONS



BORDER STYLE	BORDER WIDTH (H)	OVERALL (O.A.)
<input type="checkbox"/> 1250	1 1/4" (32)	D + 2" (51)
<input type="checkbox"/> 1000	1" (25)	D + 1 1/2" (38)
<input type="checkbox"/> 750	3/4" (19)	D + 1" (25)
<input type="checkbox"/> 500	1/2" (13)	D + 5/16" (8)



BORDER STYLE	BORDER WIDTH (H)	OVERALL (O.A.)
<input type="checkbox"/> 125	1/8" (3)	D - 1/8" (3)
<input type="checkbox"/> 187	3/16" (5)	D - 1/8" (3)

CORE STYLES

1/4" SPACING	1/2" SPACING		7/16" SPACING PENCIL PROOF
1/8" BARS	1/8" BARS	7/32" BARS	7/32" BARS
<p><input type="checkbox"/> 15A</p>	<p><input type="checkbox"/> 15B</p>	<p><input type="checkbox"/> 25B</p>	<p><input type="checkbox"/> 25C</p>
<p><input type="checkbox"/> 16A</p>	<p><input type="checkbox"/> 16B</p>	<p><input type="checkbox"/> 26B</p>	<p><input type="checkbox"/> 26C</p>
<p>15° DEFLECTION</p>	<p>15° DEFLECTION</p>	<p>15° DEFLECTION</p>	<p>15° DEFLECTION PENCIL PROOF</p>
<p>NOTES:</p> <ul style="list-style-type: none"> FOR FLAT MITRE WITH 16A, 16B, 26B, 26C, 27B AND 27C FLOW DEFLECTION MUST BE SPECIFIED. FACTORY TOLERANCE ± 1/32" (± 1mm) ANGULAR TOLERANCE ± 2° <p>FINISH:</p> <p><input type="checkbox"/> B12 WHITE (OPTIONAL FINISHES AVAILABLE)</p>	<p><input type="checkbox"/> 27B</p>	<p><input type="checkbox"/> 27C</p>	<p>30° DEFLECTION</p>
			<p>30° DEFLECTION PENCIL PROOF</p>

ALL METRIC DIMENSIONS () ARE SOFT CONVERTED. IMPERIAL DIMENSIONS ARE CONVERTED TO METRIC AND ROUNDED TO THE NEAREST MILLIMETER.

PROJECT:		
ENGINEER:		
CUSTOMER:		
SUBMITTAL DATE:		266984
SPEC. SYMBOL:		2016/07/05

MC-LBMH
MITRED CORNER
LINEAR GRILLES
FOR LBMH