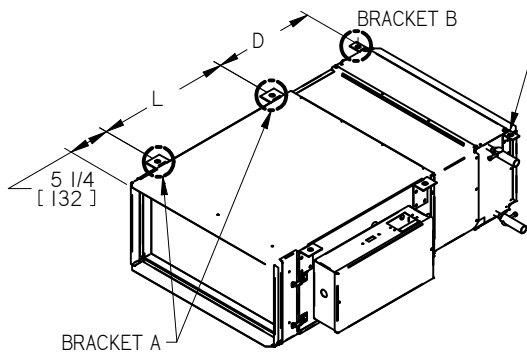


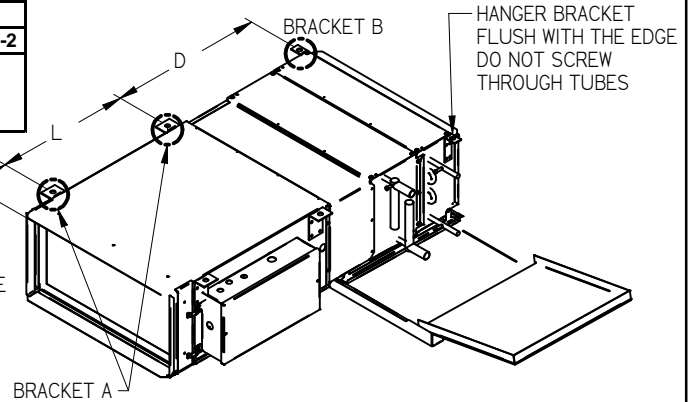
HANGER BRACKETS (HB) LOCATION



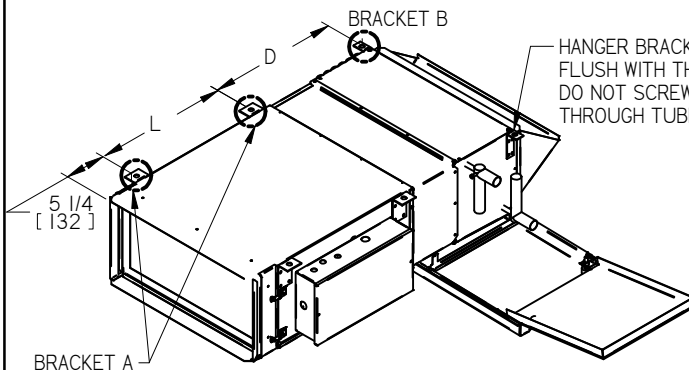
COOLING & HEATING				
UNIT SIZE	L in.(mm)	D in.(mm)		
		1 & 2 ROW	3 & 4 ROW	6 ROW
SZ. 20-40	16 7/8" (429)	13 1/4" (336)	15" (380)	16 3/8" (417)
SZ. 50, 60	18 7/8" (480)			
70	22" (559)			
PREHEAT & REHEAT				
UNIT SIZE	L in.(mm)	D in.(mm)		
		1-3; 2-3; 1-4; 2-4; 3-1; 3-2; 4-1; 4-2	1-6; 2-6; 6-1; 6-2	
SZ. 20-40	16 7/8" (429)	20" (508)	21 3/8" (544)	
SZ. 50, 60	18 7/8" (480)			
SZ. 70	22" (559)			



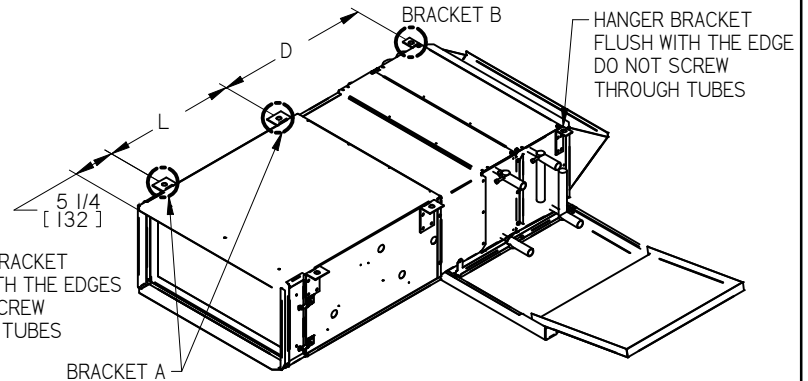
FCHG 2-PIPE SYSTEM (HEATING)



FCHG 4-PIPE SYSTEM (REHEAT)



FCHG 2-PIPE SYSTEM (COOLING)

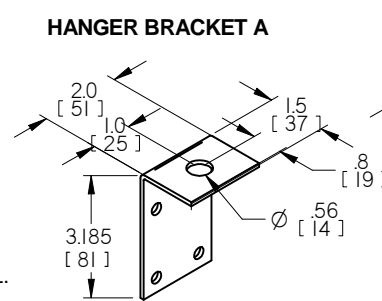


FCHG 4-PIPE SYSTEM (PREHEAT)

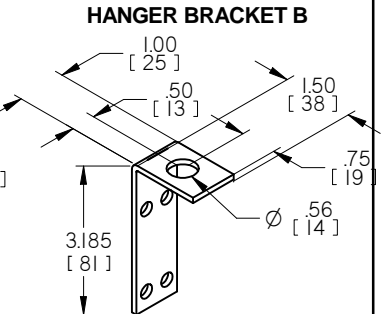
NOTES:

- HANGER BRACKETS ARE 12 GAUGE ZINC COATED STEEL.
- 4 (A) BRACKETS PER FAN UNIT. 2 (B) BRACKETS PER WATER COIL.
- BRACKETS ARE SHIPPED LOOSE FOR FIELD INSTALLATION FOR USE WITH THREADED HANGER RODS. (BY OTHERS)
- LAYOUT INDICATES SUGGESTED HANGER BRACKET LOCATIONS.
- HANGER BRACKETS TO BE FLUSH WITH TOP OF UNIT.

ALL METRIC DIMENSIONS () ARE SOFT CONVERTED. IMPERIAL DIMENSIONS ARE CONVERTED TO METRIC AND ROUNDED TO THE NEAREST MILLIMETER.



**HANGER BRACKETS (HB)
PRICE PART #: 222628**



**HANGER BRACKETS (HB)
PRICE PART #: 247895**

PROJECT:

ENGINEER:

CUSTOMER:

SUBMITTAL DATE:

SPEC. SYMBOL:

PRICE

GF

255512

2017/07/17

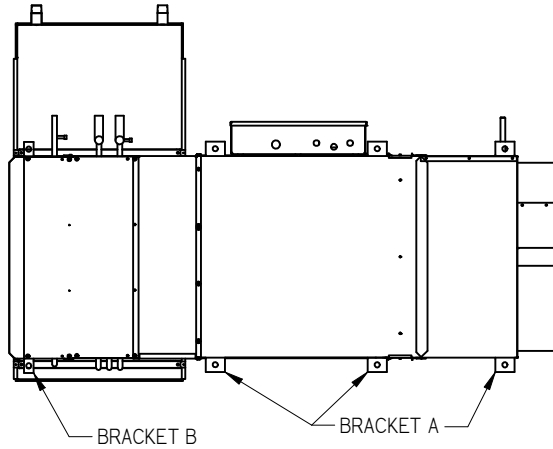
**ACCESSORIES
HANGER BRACKETS (HB)
LOCATIONS
FOR FCHG**

Solid Edge

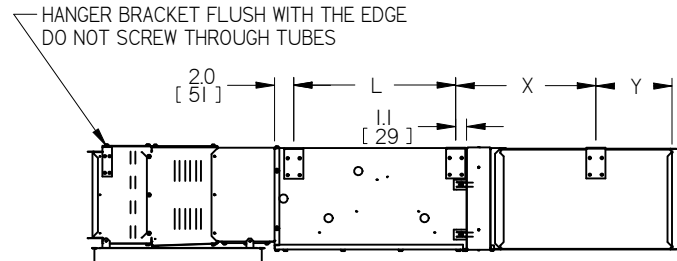
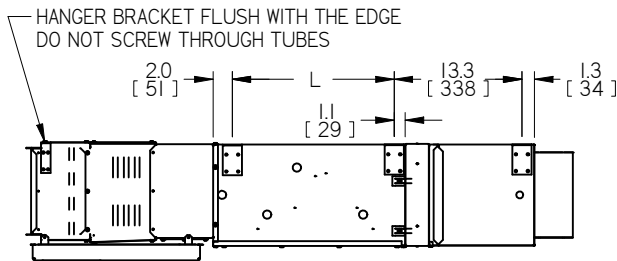
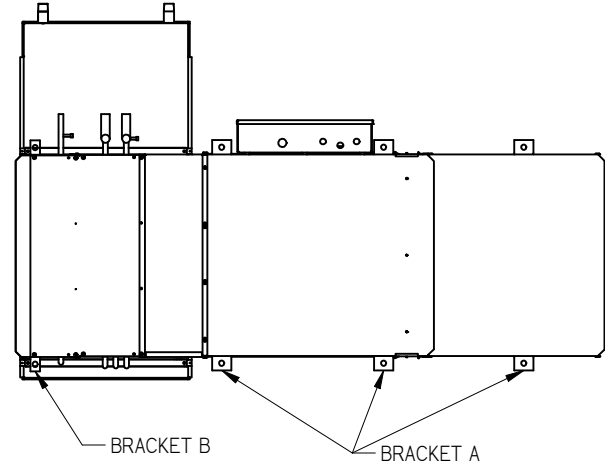
HANGER BRACKETS (HB) LOCATION

UNIT SIZE	L in.(mm)	X in. (mm)	Y in. (mm)
SZ. 20-40	16 7/8" (429)	14 5/8" (370)	7 7/8" (200)
SZ. 50, 60	18 7/8" (480)	14 5/8" (370)	7 7/8" (200)
SZ. 70	22" (559)	25" (635)	15 5/8" (397)

**FCHG 4-PIPE SYSTEM
(REHEAT) W/ MIXING BOX OR FAI**



**FCHG 4-PIPE SYSTEM
(REHEAT) W/ INLET SILENCER**

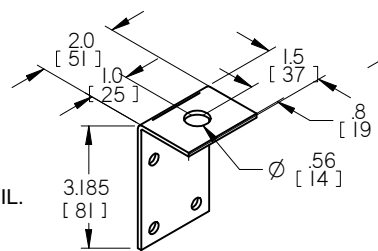


NOTES:

- HANGER BRACKETS ARE 12 GAUGE ZINC COATED STEEL.
- 4 (A) BRACKETS PER FAN UNIT. 2 (B) BRACKETS PER WATER COIL.
- 2 (A) BRACKETS PER MIXING BOX AND FRESH AIR INLET
- 2 (A) BRACKETS PER INLET SILENCER
- BRACKETS ARE SHIPPED LOOSE FOR FIELD INSTALLATION FOR USE WITH THREADED HANGER RODS. (BY OTHERS)
- LAYOUT INDICATES SUGGESTED HANGER BRACKET LOCATIONS.
- HANGER BRACKETS TO BE FLUSH WITH TOP OF UNIT.

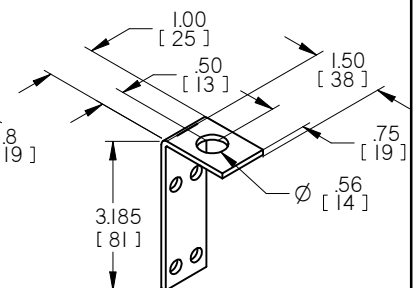
ALL METRIC DIMENSIONS () ARE SOFT CONVERTED. IMPERIAL DIMENSIONS ARE CONVERTED TO METRIC AND ROUNDED TO THE NEAREST MILLIMETER.

HANGER BRACKET A



**HANGER BRACKETS (HB)
PRICE PART #: 222628**

HANGER BRACKET B



**HANGER BRACKETS (HB)
PRICE PART #: 247895**

PROJECT:

ENGINEER:

CUSTOMER:

SUBMITTAL DATE:

SPEC. SYMBOL:

PRICE

GF

255512

2017/07/17

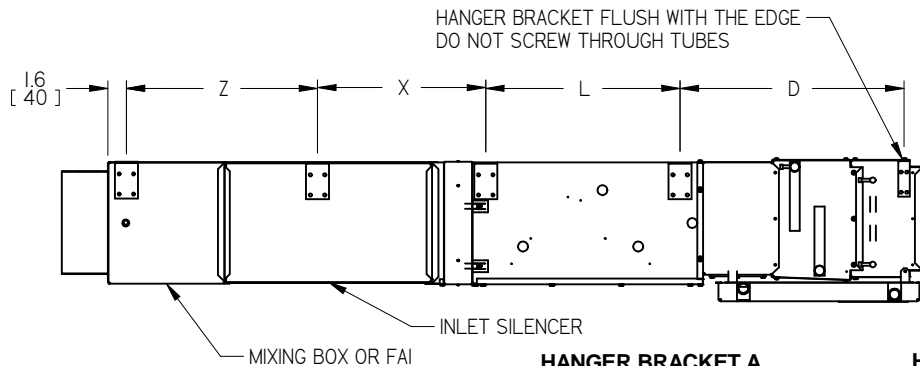
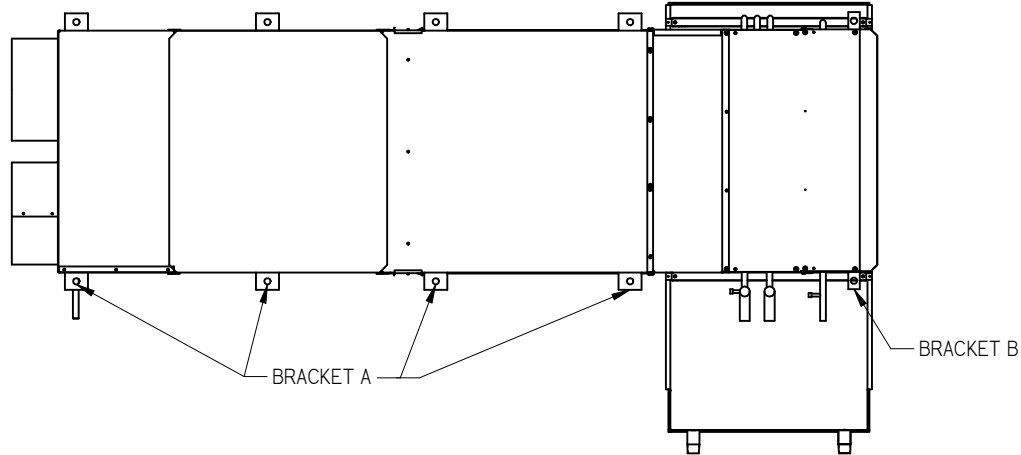
**ACCESSORIES
HANGER BRACKETS (HB)
LOCATIONS
FOR FCHG**

Solid Edge

HANGER BRACKETS (HB) LOCATION

COOLING & HEATING						
UNIT SIZE	L in.(mm)	D in.(mm)			X in. (mm)	Z in. (mm)
		1 & 2 ROW	3 & 4 ROW	6 ROW		
SZ. 20-40	16 7/8" (429)	13 1/4" (336)	15" (380)	16 3/8" (417)	14 5/8" (370)	16 5/8" (423)
SZ. 50, 60	18 7/8" (480)				14 5/8" (370)	16 5/8" (423)
70	22" (559)				25" (635)	24 1/4" (616)
PREHEAT & REHEAT						
UNIT SIZE	L in.(mm)	D in.(mm)			X in. (mm)	Z in. (mm)
		1-3; 2-3; 1-4; 2-4; 3-1; 3-2; 4-1; 4-2	1-6; 2-6; 6-1; 6-2			
SZ. 20-40	16 7/8" (429)	20" (508)	21 3/8" (544)		14 5/8" (370)	16 5/8" (423)
SZ. 50, 60	18 7/8" (480)			14 5/8" (370)	16 5/8" (423)	
SZ. 70	22" (559)			25" (635)	24 1/4" (616)	

FCHG WITH MIXING BOX OR FAI AND INLET SILENCER

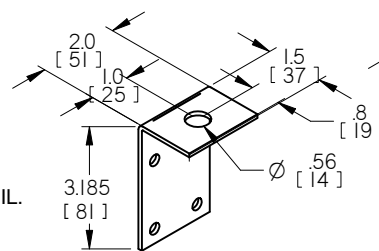


NOTES:

- HANGER BRACKETS ARE 12 GAUGE ZINC COATED STEEL.
- 4 (A) BRACKETS PER FAN UNIT. 2 (B) BRACKETS PER WATER COIL.
- 2 (A) BRACKETS PER MIXING BOX AND FRESH AIR INLET
- 2 (A) BRACKETS PER INLET SILENCER
- BRACKETS ARE SHIPPED LOOSE FOR FIELD INSTALLATION FOR USE WITH THREADED HANGER RODS. (BY OTHERS)
- LAYOUT INDICATES SUGGESTED HANGER BRACKET LOCATIONS.
- HANGER BRACKETS TO BE FLUSH WITH TOP OF UNIT.

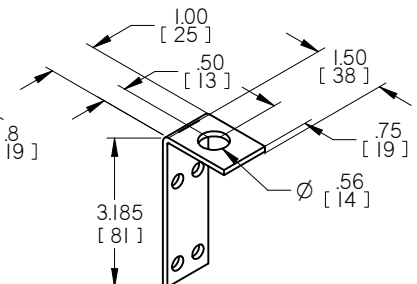
ALL METRIC DIMENSIONS () ARE SOFT CONVERTED. IMPERIAL DIMENSIONS ARE CONVERTED TO METRIC AND ROUNDED TO THE NEAREST MILLIMETER.

HANGER BRACKET A



**HANGER BRACKETS (HB)
PRICE PART #: 222628**

HANGER BRACKET B



**HANGER BRACKETS (HB)
PRICE PART #: 247895**

PROJECT:

ENGINEER:

CUSTOMER:

SUBMITTAL DATE:

SPEC. SYMBOL:

PRICE

GF

255512

2017/07/17

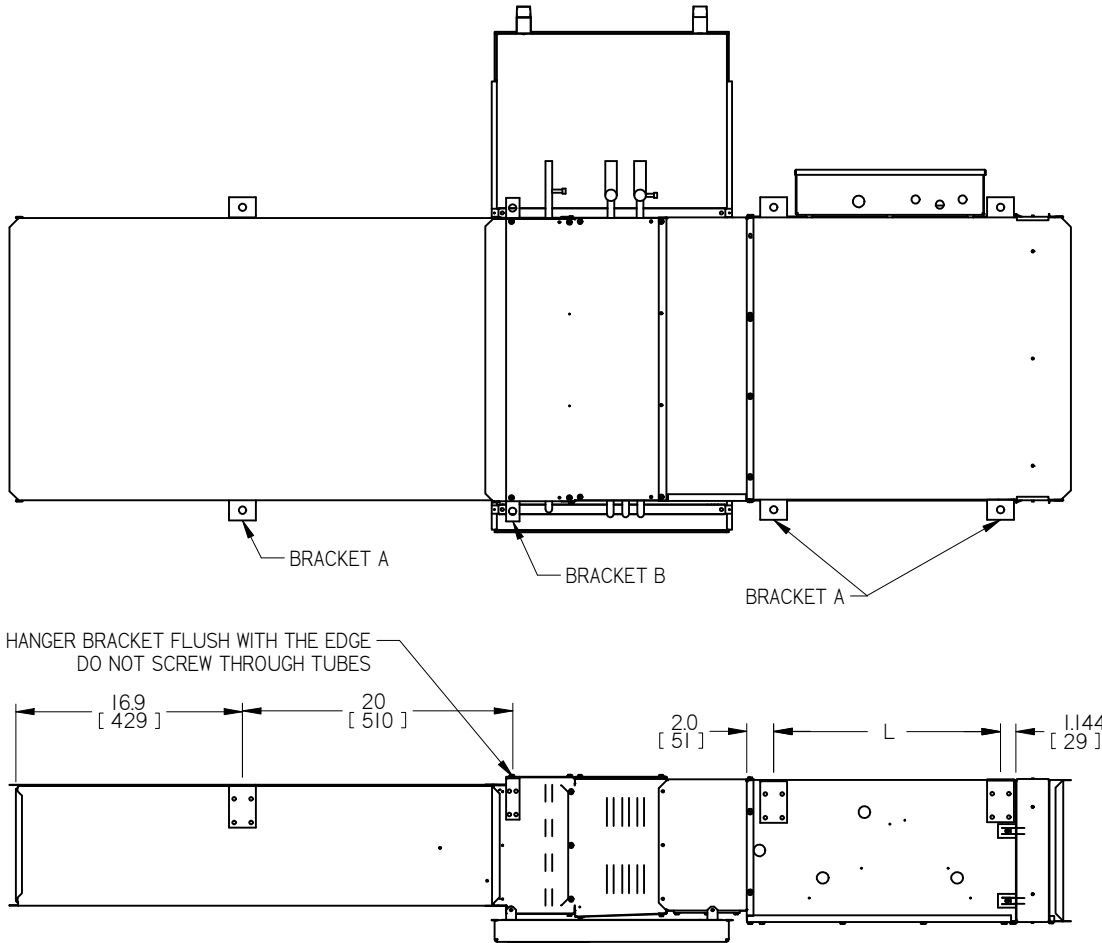
**ACCESSORIES
HANGER BRACKETS (HB)
LOCATIONS
FOR FCHG WITH MIXING BOX
OR FAI AND INLET SILENCER**

Solid Edge

HANGER BRACKETS (HB) LOCATION

FCHGQ

UNIT SIZE	L in.(mm)
SZ. 20-40	16 7/8" (429)
SZ. 50, 60	18 7/8" (480)
SZ. 70	22" (559)

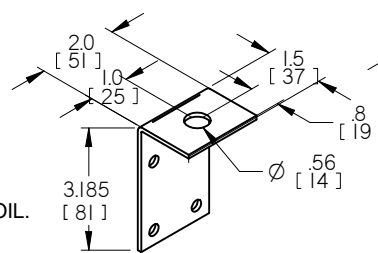


NOTES:

- HANGER BRACKETS ARE 12 GAUGE ZINC COATED STEEL.
- 4 (A) BRACKETS PER FAN UNIT. 2 (B) BRACKETS PER WATER COIL. 2 (A) BRACKETS PER SILENCER.
- BRACKETS ARE SHIPPED LOOSE FOR FIELD INSTALLATION FOR USE WITH THREADED HANGER RODS. (BY OTHERS)
- LAYOUT INDICATES SUGGESTED HANGER BRACKET LOCATIONS.
- HANGER BRACKETS TO BE FLUSH WITH TOP OF UNIT.

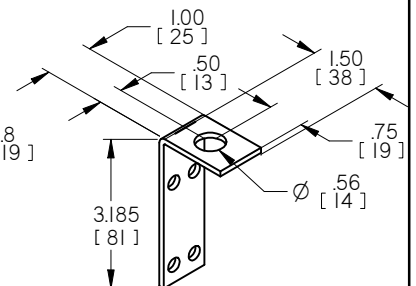
ALL METRIC DIMENSIONS () ARE SOFT CONVERTED. IMPERIAL DIMENSIONS ARE CONVERTED TO METRIC AND ROUNDED TO THE NEAREST MILLIMETER.

HANGER BRACKET A



**HANGER BRACKETS (HB)
PRICE PART #: 222628**

HANGER BRACKET B



**HANGER BRACKETS (HB)
PRICE PART #: 247895**

PROJECT:

ENGINEER:

CUSTOMER:

SUBMITTAL DATE:

SPEC. SYMBOL:

PRICE

GF

255512

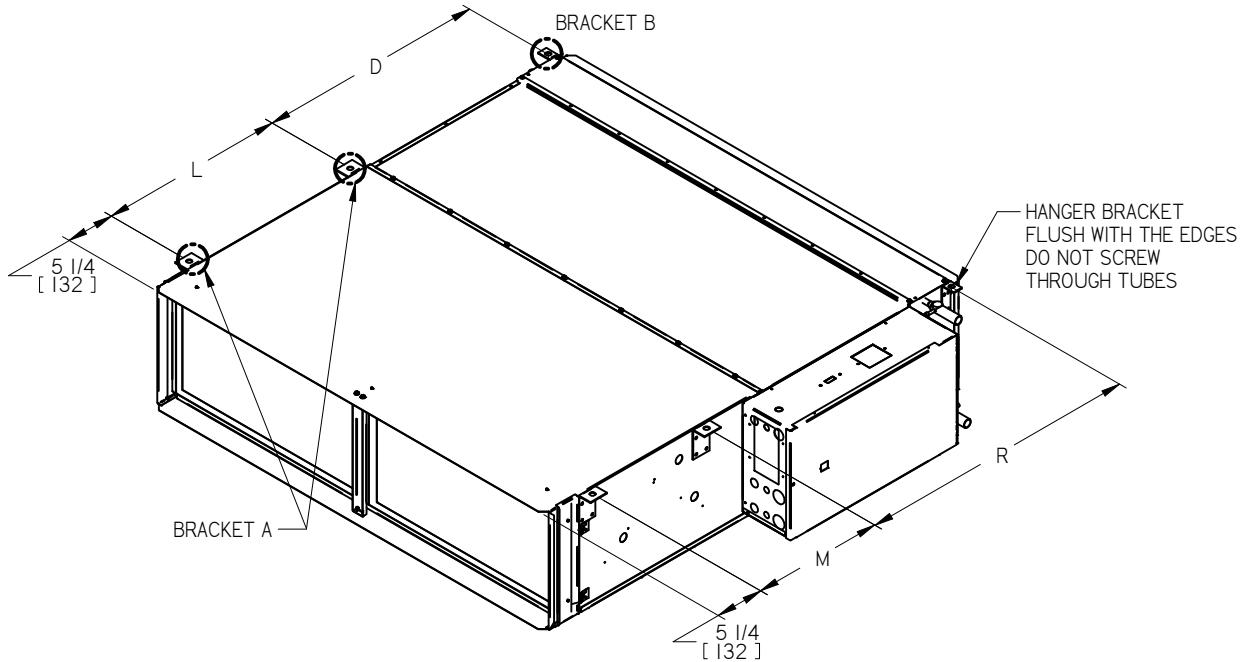
2017/07/17

**ACCESSORIES
HANGER BRACKETS (HB)
LOCATIONS
FOR FCHGQ**

Solid Edge

HANGER BRACKETS (HB) LOCATION

COOLING								
UNIT SIZE	L in.(mm)	M in.(mm)	D in.(mm)			R in.(mm)		
			1 & 2 ROW	3 & 4 ROW	6 ROW	1 & 2 ROW	3 & 4 ROW	6 ROW
SZ. 20-40	17 1/4" (438)	12 5/8" (321)	24 1/4" (616)	26" (660)	28" (711)	28 7/8" (733)	30 5/8" (777)	32 5/8" (829)
SZ. 50, 60	19 3/4" (502)	15" (381)				29" (737)	30 3/4" (781)	32 3/4" (831)
SZ. 70	22 7/8" (581)	18 1/8" (460)						



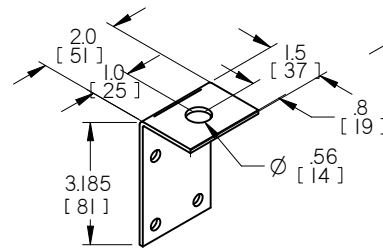
**FCHG 2-PIPE SYSTEM
COOLING W/ ELECTRIC HEAT**



NOTES:

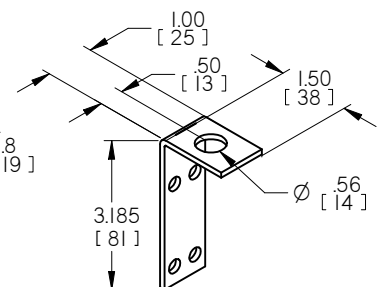
- HANGER BRACKETS ARE 12 GAUGE ZINC COATED STEEL.
- 4 (A) BRACKETS PER FAN UNIT. 2 (B) BRACKETS PER WATER COIL.
- BRACKETS ARE SHIPPED LOOSE FOR FIELD INSTALLATION FOR USE WITH THREADED HANGER RODS. (BY OTHERS)
- LAYOUT INDICATES SUGGESTED HANGER BRACKET LOCATIONS.
- HANGER BRACKETS TO BE FLUSH WITH TOP OF UNIT.

HANGER BRACKET A



**HANGER BRACKETS (HB)
PRICE PART #: 222628**

HANGER BRACKET B

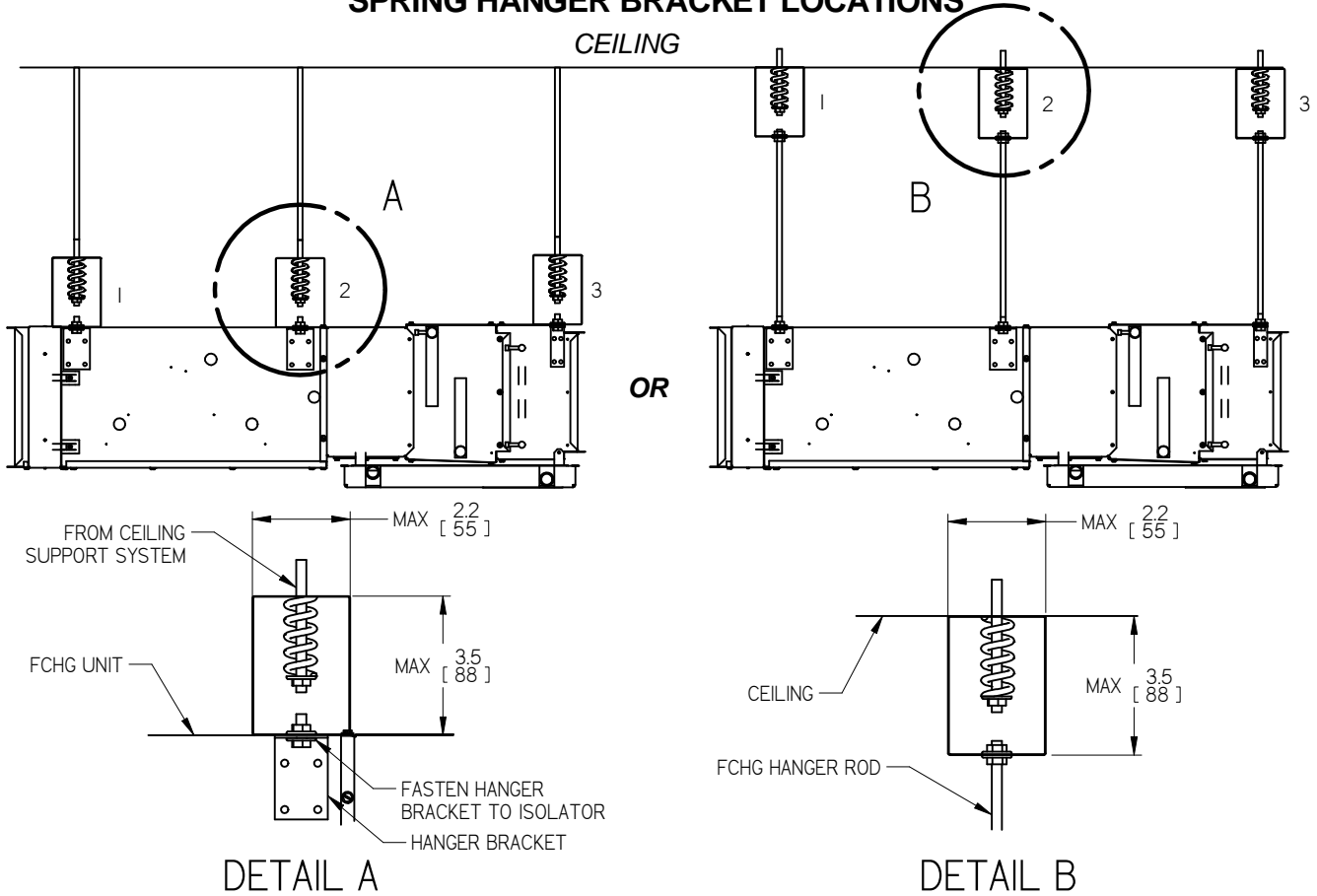


**HANGER BRACKETS (HB)
PRICE PART #: 247895**

ALL METRIC DIMENSIONS () ARE SOFT CONVERTED. IMPERIAL DIMENSIONS ARE CONVERTED TO METRIC AND ROUNDED TO THE NEAREST MILLIMETER.

PROJECT:		price®	
ENGINEER:		GF	ACCESSORIES HANGER BRACKETS (HB) LOCATIONS FOR FCHG W/ EC
CUSTOMER:			
SUBMITTAL DATE:		255512	
SPEC. SYMBOL:		2017/07/17	

SPRING HANGER BRACKET LOCATIONS



FCHG SPRING BRACKET COLORS								
COIL	1-4 ROW		5 ROW		6 & 7 ROW		8 ROW	
BRACKET #	1&2	3	1&2	3	1&2	3	1&2	3
20-40	BLUE OR RED	BLUE OR RED	BLUE OR RED	BLUE OR RED	BLUE OR RED	BLUE OR RED	BLUE OR RED	BLUE OR RED
50	BLUE OR RED	BLUE OR RED	BLUE OR RED	BLUE OR RED	BLUE OR RED	BLUE OR RED	BLUE OR RED	GREEN OR YELLOW
60	BLUE OR RED	BLUE OR RED	BLUE OR RED	BLUE OR RED	BLUE OR RED	GREEN OR YELLOW	BLUE OR RED	GREEN OR YELLOW
70	GREEN OR YELLOW	BLUE OR RED	GREEN OR YELLOW	GREEN OR YELLOW	GREEN OR YELLOW	GREEN OR YELLOW	GREEN OR YELLOW	GREEN OR YELLOW

NOTES:

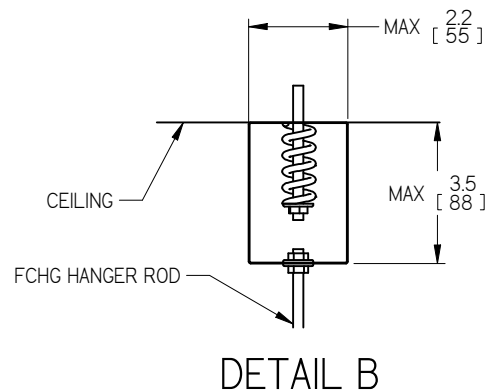
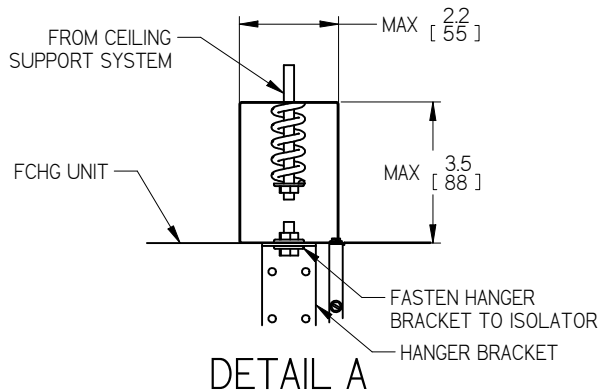
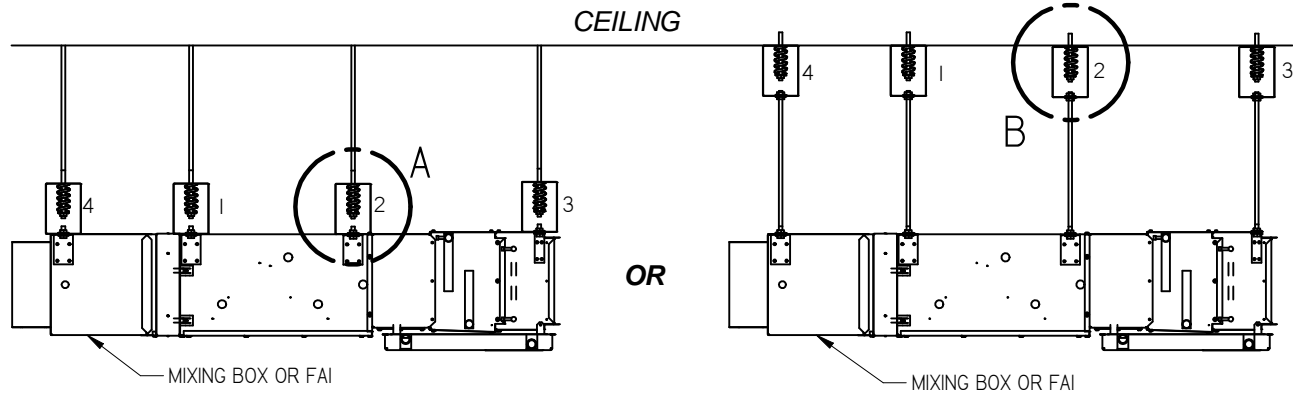
- REFER TO DRAWING 255512 FOR HANGER BRACKET LOCATIONS AND TYPE (A or B) BASED ON UNIT SIZE
- BLUE HANGER BRACKETS RATED TO A MAXIMUM OF 35 LB
- GREEN HANGER BRACKETS RATED TO A MAXIMUM OF 65LB
- RED HANGER BRACKETS RATED TO A MAXIMUM OF 39 LB
- YELLOW HANGER BRACKETS RATED TO A MAXIMUM OF 68 LB
- HANGER BRACKETS AND SPRING BRACKETS ARE SHIPPED LOOSE FOR FIELD INSTALLATION
- ORIENT THE ISOLATOR AS SHOWN TO PROPERLY DAMPEN FAN COIL

ALL METRIC DIMENSIONS () ARE SOFT CONVERTED. IMPERIAL DIMENSIONS ARE CONVERTED TO METRIC AND ROUNDED TO THE NEAREST MILLIMETER.



PROJECT:		price	
ENGINEER:		GF	FCHG SPRING HANGER BRACKET INSTALLATION
CUSTOMER:			
SUBMITTAL DATE:			
SPEC. SYMBOL:		260678	
		2017/04/04	

SPRING HANGER BRACKET LOCATIONS





FCHG SPRING BRACKET COLORS												
COIL	1-4 ROW			5 ROW			6 & 7 ROW			8 ROW		
BRACKET #	1&2	3	4	1&2	3	4	1&2	3	4	1&2	3	4
20-40	BLUE OR RED	BLUE OR RED	BLUE OR RED	BLUE OR RED	BLUE OR RED	BLUE OR RED	BLUE OR RED	BLUE OR RED	BLUE OR RED	BLUE OR RED	BLUE OR RED	BLUE OR RED
50	BLUE OR RED	BLUE OR RED	BLUE OR RED	BLUE OR RED	BLUE OR RED	BLUE OR RED	BLUE OR RED	BLUE OR RED	BLUE OR RED	BLUE OR RED	GREEN OR YELLOW	BLUE OR RED
60	BLUE OR RED	BLUE OR RED	BLUE OR RED	BLUE OR RED	BLUE OR RED	BLUE OR RED	BLUE OR RED	GREEN OR YELLOW	BLUE OR RED	BLUE OR RED	GREEN OR YELLOW	BLUE OR RED
70	GREEN OR YELLOW	BLUE OR RED	BLUE OR RED	GREEN OR YELLOW	GREEN OR YELLOW	BLUE OR RED	GREEN OR YELLOW	GREEN OR YELLOW	BLUE OR RED	GREEN OR YELLOW	GREEN OR YELLOW	BLUE OR RED

NOTES:

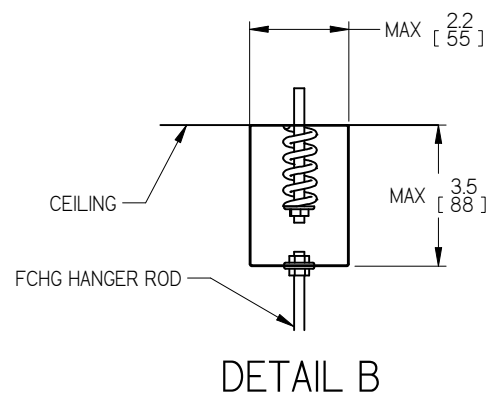
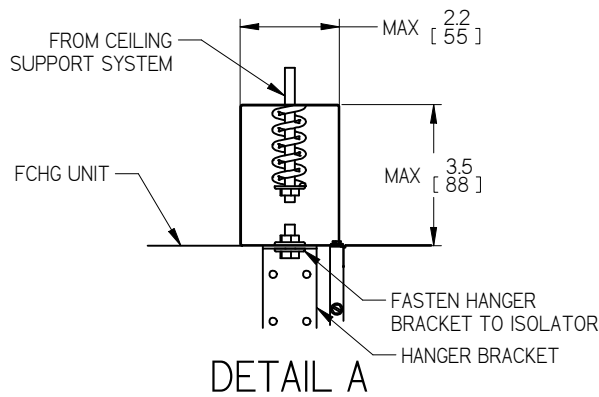
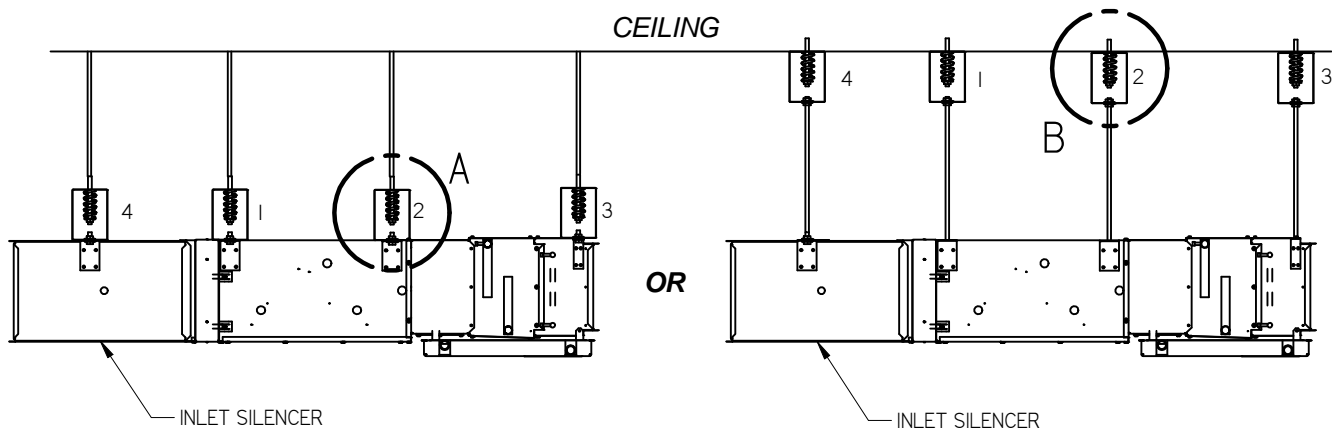
- REFER TO DRAWING 255512 FOR HANGER BRACKET LOCATIONS AND TYPE (A or B) BASED ON UNIT SIZE
- BLUE HANGER BRACKETS RATED TO A MAXIMUM OF 35 LB
- GREEN HANGER BRACKETS RATED TO A MAXIMUM OF 65 LB
- RED HANGER BRACKETS RATED TO A MAXIMUM OF 39 LB
- YELLOW HANGER BRACKETS RATED TO A MAXIMUM OF 68 LB
- HANGER BRACKETS AND SPRING BRACKETS ARE SHIPPED LOOSE FOR FIELD INSTALLATION
- ORIENT THE ISOLATOR AS SHOWN TO PROPERLY DAMPEN FAN COIL



ALL METRIC DIMENSIONS () ARE SOFT CONVERTED. IMPERIAL DIMENSIONS ARE CONVERTED TO METRIC AND ROUNDED TO THE NEAREST MILLIMETER.

PROJECT:		 FCHG WITH MIXING BOX OR FAI SPRING HANGER BRACKET INSTALLATION
ENGINEER:		
CUSTOMER:		
SUBMITTAL DATE:	SPEC. SYMBOL:	
		 260678 2017/04/04

SPRING HANGER BRACKET LOCATIONS



FCHG SPRING BRACKET COLORS												
COIL	1-4 ROW			5 ROW			6 & 7 ROW			8 ROW		
BRACKET #	1&2	3	4	1&2	3	4	1&2	3	4	1&2	3	4
20-40	BLUE OR RED	BLUE OR RED	BLUE OR RED	BLUE OR RED	BLUE OR RED	BLUE OR RED	BLUE OR RED	BLUE OR RED	BLUE OR RED	BLUE OR RED	BLUE OR RED	BLUE OR RED
50	BLUE OR RED	BLUE OR RED	BLUE OR RED	BLUE OR RED	BLUE OR RED	BLUE OR RED	BLUE OR RED	BLUE OR RED	BLUE OR RED	BLUE OR RED	GREEN OR YELLOW	BLUE OR RED
60	BLUE OR RED	BLUE OR RED	BLUE OR RED	BLUE OR RED	BLUE OR RED	BLUE OR RED	BLUE OR RED	GREEN OR YELLOW	BLUE OR RED	BLUE OR RED	GREEN OR YELLOW	BLUE OR RED
70	GREEN OR YELLOW	BLUE OR RED	GREEN OR YELLOW	GREEN OR YELLOW	GREEN OR YELLOW	GREEN OR YELLOW	GREEN OR YELLOW	GREEN OR YELLOW	GREEN OR YELLOW	GREEN OR YELLOW	GREEN OR YELLOW	GREEN OR YELLOW

NOTES:

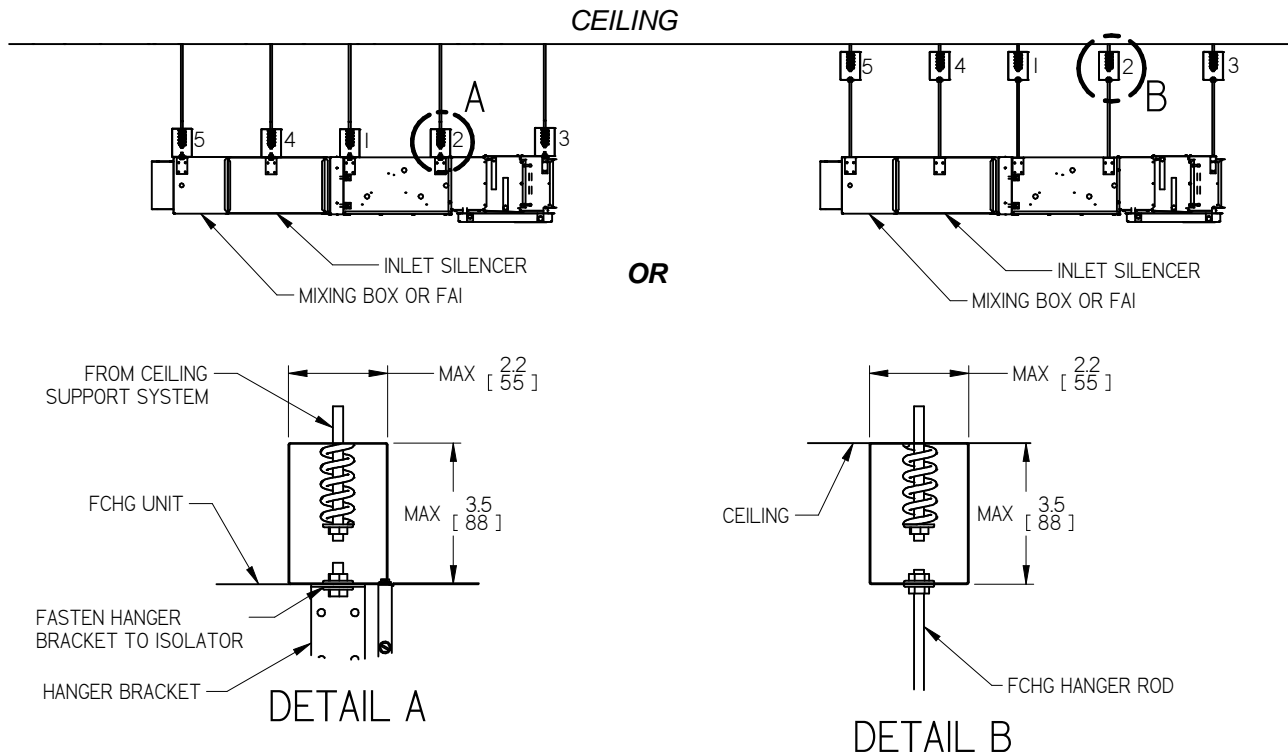
- REFER TO DRAWING 255512 FOR HANGER BRACKET LOCATIONS AND TYPE (A or B) BASED ON UNIT SIZE
- BLUE HANGER BRACKETS RATED TO A MAXIMUM OF 35 LB
- GREEN HANGER BRACKETS RATED TO A MAXIMUM OF 65 LB
- RED HANGER BRACKETS RATED TO MAXIMUM OF 39 LB
- YELLOW HANGER BRACKETS RATED TO MAXIMUM OF 68 LB
- HANGER BRACKETS AND SPRING BRACKETS ARE SHIPPED LOOSE FOR FIELD INSTALLATION
- ORIENT THE ISOLATOR AS SHOWN TO PROPERLY DAMPEN FAN COIL

ALL METRIC DIMENSIONS () ARE SOFT CONVERTED. IMPERIAL DIMENSIONS ARE CONVERTED TO METRIC AND ROUNDED TO THE NEAREST MILLIMETER.



PROJECT:		price	
ENGINEER:		GF	FCHG WITH INLET SILENCER SPRING HANGER BRACKET INSTALLATION
CUSTOMER:			
SUBMITTAL DATE:			
SPEC. SYMBOL:		260678	
		2017/04/04	

SPRING HANGER BRACKET LOCATIONS



FCHG SPRING BRACKET COLORS																
COIL	1-4 ROW				5 ROW				6 & 7 ROW				8 ROW			
BRACKET #	1&2	3	4	5	1&2	3	4	5	1&2	3	4	5	1&2	3	4	5
20-40	BLUE OR RED	BLUE OR RED	BLUE OR RED	BLUE OR RED	BLUE OR RED	BLUE OR RED	BLUE OR RED	BLUE OR RED	BLUE OR RED	BLUE OR RED	BLUE OR RED	BLUE OR RED	BLUE OR RED	BLUE OR RED	BLUE OR RED	BLUE OR RED
50	BLUE OR RED	BLUE OR RED	BLUE OR RED	BLUE OR RED	BLUE OR RED	BLUE OR RED	BLUE OR RED	BLUE OR RED	BLUE OR RED	BLUE OR RED	BLUE OR RED	BLUE OR RED	BLUE OR RED	GREEN OR YELLOW	BLUE OR RED	BLUE OR RED
60	BLUE OR RED	BLUE OR RED	BLUE OR RED	BLUE OR RED	BLUE OR RED	BLUE OR RED	BLUE OR RED	BLUE OR RED	BLUE OR RED	GREEN OR YELLOW	BLUE OR RED	BLUE OR RED	BLUE OR RED	GREEN OR YELLOW	BLUE OR RED	BLUE OR RED
70	GREEN OR YELLOW	BLUE OR RED	GREEN OR YELLOW	BLUE OR RED	GREEN OR YELLOW	GREEN OR YELLOW	GREEN OR YELLOW	BLUE OR RED	GREEN OR YELLOW	GREEN OR YELLOW	GREEN OR YELLOW	BLUE OR RED	GREEN OR YELLOW	GREEN OR YELLOW	GREEN OR YELLOW	BLUE OR RED

NOTES:

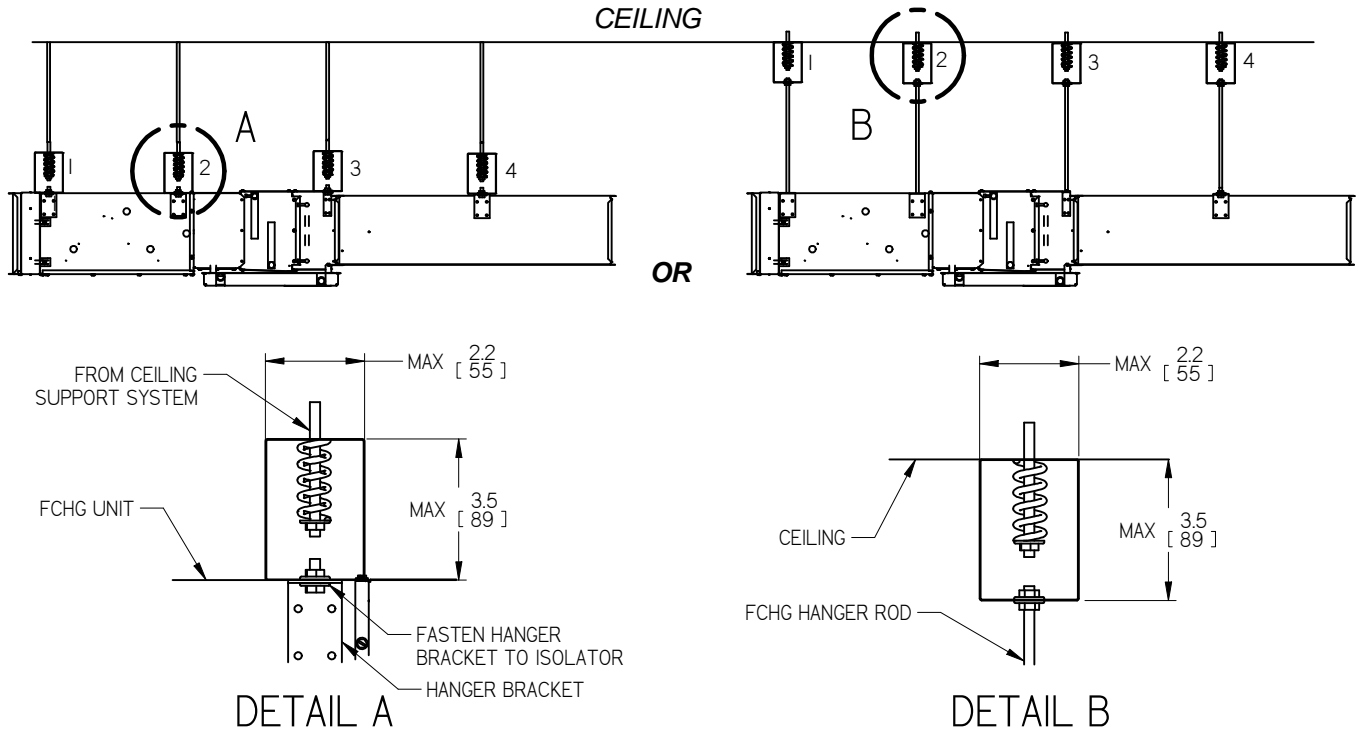
- REFER TO DRAWING 255512 FOR HANGER BRACKET LOCATIONS AND TYPE (A or B) BASED ON UNIT SIZE
- BLUE HANGER BRACKETS RATED TO A MAXIMUM OF 35 LB
- GREEN HANGER BRACKETS RATED TO A MAXIMUM OF 65 LB
- RED HANGER BRACKETS RATED TO A MAXIMUM OF 39 LB
- YELLOW HANGER BRACKETS RATED TO A MAXIMUM OF 68 LB
- HANGER BRACKETS AND SPRING BRACKETS ARE SHIPPED LOOSE FOR FIELD INSTALLATION
- ORIENT THE ISOLATOR AS SHOWN TO PROPERLY DAMPEN FAN COIL

ALL METRIC DIMENSIONS () ARE SOFT CONVERTED. IMPERIAL DIMENSIONS ARE CONVERTED TO METRIC AND ROUNDED TO THE NEAREST MILLIMETER.



PROJECT:		price®	
ENGINEER:		GF	FCHG WITH MIXING BOX OR FAI AND INLET SILENCER SPRING HANGER BRACKET INSTALLATION
CUSTOMER:			
SUBMITTAL DATE:			
SPEC. SYMBOL:		260678	
		2017/04/04	

SPRING HANGER BRACKET LOCATIONS



FCHGQ SPRING BRACKET COLORS												
COIL	1-4 ROW			5 ROW			6 & 7 ROW			8 ROW		
BRACKET #	1&2	3	4	1&2	3	4	1&2	3	4	1&2	3	4
20-40	BLUE OR RED	BLUE OR RED	BLUE OR RED	BLUE OR RED	BLUE OR RED	BLUE OR RED	BLUE OR RED	BLUE OR RED	BLUE OR RED	BLUE OR RED	BLUE OR RED	BLUE OR RED
50	BLUE OR RED	BLUE OR RED	BLUE OR RED	BLUE OR RED	BLUE OR RED	BLUE OR RED	BLUE OR RED	BLUE OR RED	BLUE OR RED	BLUE OR RED	GREEN OR YELLOW	BLUE OR RED
60	BLUE OR RED	BLUE OR RED	GREEN OR YELLOW	BLUE OR RED	BLUE OR RED	GREEN OR YELLOW	BLUE OR RED	GREEN OR YELLOW	GREEN OR YELLOW	BLUE OR RED	GREEN OR YELLOW	GREEN OR YELLOW
70	GREEN OR YELLOW	BLUE OR RED	GREEN OR YELLOW	GREEN OR YELLOW	GREEN OR YELLOW	GREEN OR YELLOW	GREEN OR YELLOW	GREEN OR YELLOW	GREEN OR YELLOW	GREEN OR YELLOW	GREEN OR YELLOW	GREEN OR YELLOW

NOTES:

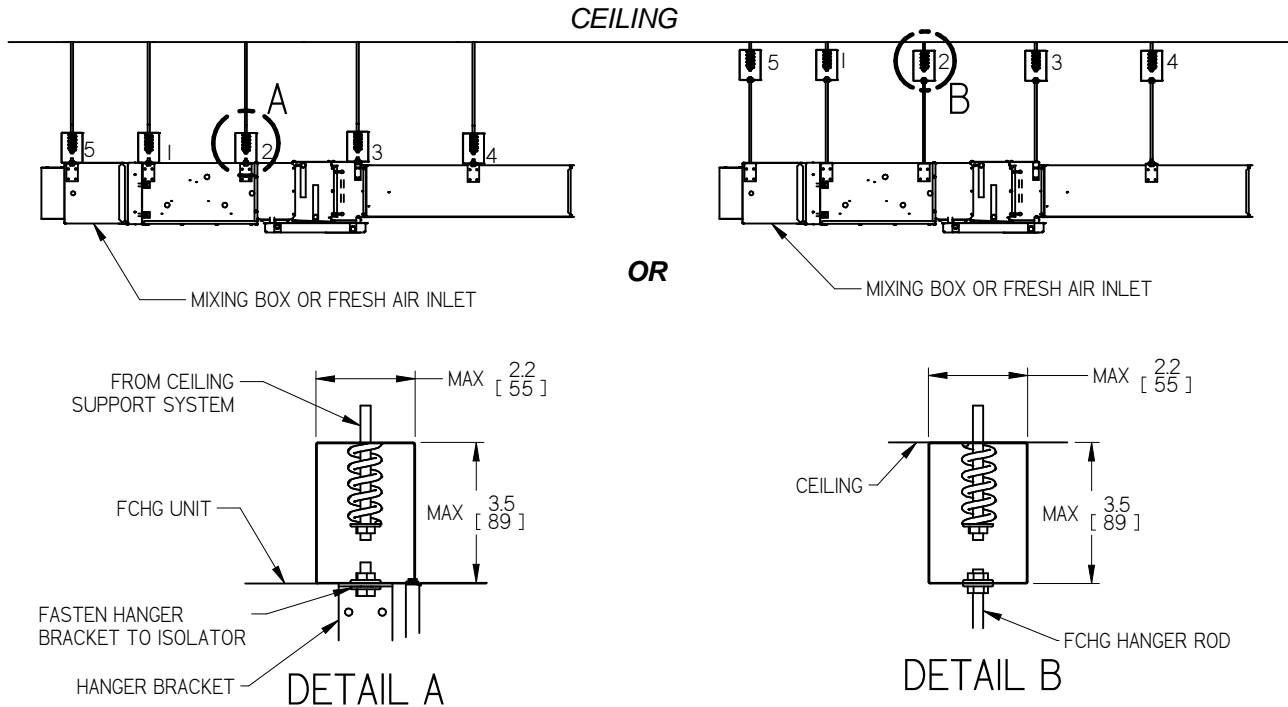
- REFER TO DRAWING 255512 FOR HANGER BRACKET LOCATIONS AND TYPE (A or B) BASED ON UNIT SIZE
- BLUE HANGER BRACKETS RATED TO A MAXIMUM OF 35 LB
- GREEN HANGER BRACKETS RATED TO A MAXIMUM OF 65 LB
- RED HANGER BRACKETS RATED TO A MAXIMUM OF 39 LB
- YELLOW HANGER BRACKETS RATED TO A MAXIMUM OF 68 LB
- HANGER BRACKETS AND SPRING BRACKETS ARE SHIPPED LOOSE FOR FIELD INSTALLATION
- ORIENT THE ISOLATOR AS SHOWN TO PROPERLY DAMPEN FAN COIL

ALL METRIC DIMENSIONS () ARE SOFT CONVERTED. IMPERIAL DIMENSIONS ARE CONVERTED TO METRIC AND ROUNDED TO THE NEAREST MILLIMETER.



PROJECT:		price	
ENGINEER:		GF	FCHGQ SPRING HANGER BRACKET INSTALLATION
CUSTOMER:			
SUBMITTAL DATE:			
SPEC. SYMBOL:		261088	
		2017/03/04	

SPRING HANGER BRACKET LOCATIONS



FCHGQ SPRING BRACKET COLORS

COIL	1-4 ROW				5 ROW				6 & 7 ROW				8 ROW			
BRACKET #	1&2	3	4	5	1&2	3	4	5	1&2	3	4	5	1&2	3	4	5
20-40	BLUE OR RED	BLUE OR RED	BLUE OR RED	BLUE OR RED	BLUE OR RED	BLUE OR RED	BLUE OR RED	BLUE OR RED	BLUE OR RED	BLUE OR RED	BLUE OR RED	BLUE OR RED	BLUE OR RED	BLUE OR RED	BLUE OR RED	BLUE OR RED
50	BLUE OR RED	BLUE OR RED	BLUE OR RED	BLUE OR RED	BLUE OR RED	BLUE OR RED	BLUE OR RED	BLUE OR RED	BLUE OR RED	BLUE OR RED	BLUE OR RED	BLUE OR RED	BLUE OR RED	GREEN OR YELLOW	BLUE OR RED	BLUE OR RED
60	BLUE OR RED	BLUE OR RED	GREEN OR YELLOW	BLUE OR RED	BLUE OR RED	BLUE OR RED	GREEN OR YELLOW	BLUE OR RED	BLUE OR RED	GREEN OR YELLOW	GREEN OR YELLOW	BLUE OR RED	BLUE OR RED	GREEN OR YELLOW	GREEN OR YELLOW	BLUE OR RED
70	GREEN OR YELLOW	BLUE OR RED	GREEN OR YELLOW	BLUE OR RED	GREEN OR YELLOW	GREEN OR YELLOW	GREEN OR YELLOW	BLUE OR RED	GREEN OR YELLOW	GREEN OR YELLOW	GREEN OR YELLOW	BLUE OR RED	GREEN OR YELLOW	GREEN OR YELLOW	GREEN OR YELLOW	BLUE OR RED

NOTES:

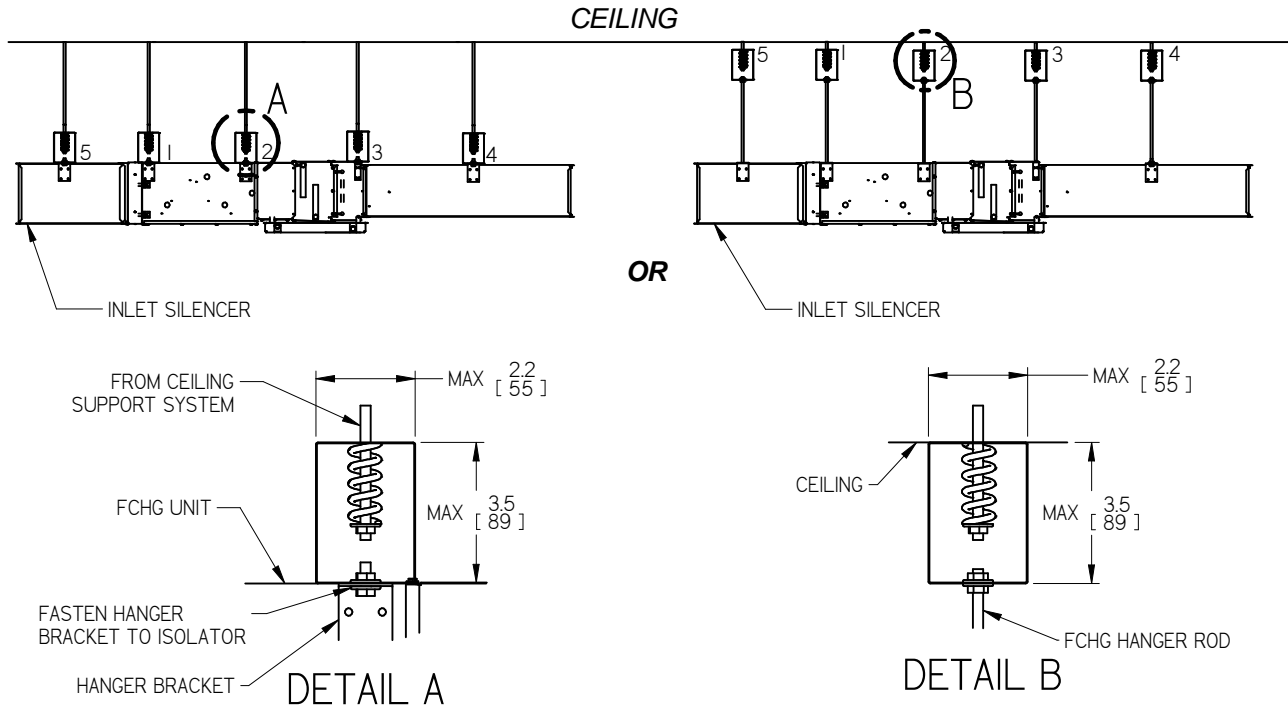
- REFER TO DRAWING 255512 FOR HANGER BRACKET LOCATIONS AND TYPE (A or B) BASED ON UNIT SIZE
- RED HANGER BRACKETS RATED TO A MAXIMUM OF 35 LB
- YELLOW HANGER BRACKETS RATED TO A MAXIMUM OF 65 LB
- RED HANGER BRACKETS RATED TO A MAXIMUM OF 39 LB
- YELLOW HANGER BRACKETS RATED TO A MAXIMUM OF 68 LB
- HANGER BRACKETS AND SPRING BRACKETS ARE SHIPPED LOOSE FOR FIELD INSTALLATION
- ORIENT THE ISOLATOR AS SHOWN TO PROPERLY DAMPEN FAN COIL

ALL METRIC DIMENSIONS () ARE SOFT CONVERTED. IMPERIAL DIMENSIONS ARE CONVERTED TO METRIC AND ROUNDED TO THE NEAREST MILLIMETER.



PROJECT:		price	
ENGINEER:			
CUSTOMER:		GF	FCHGQ WITH MIXING BOX OR FAI SPRING HANGER BRACKET INSTALLATION
SUBMITTAL DATE:			
SPEC. SYMBOL:		261088	
		2017/03/04	

SPRING HANGER BRACKET LOCATIONS



FCHGQ SPRING BRACKET COLORS



COIL	1-4 ROW				5 ROW				6 & 7 ROW				8 ROW			
BRACKET #	1&2	3	4	5	1&2	3	4	5	1&2	3	4	5	1&2	3	4	5
20-40	BLUE OR RED	BLUE OR RED	BLUE OR RED	BLUE OR RED	BLUE OR RED	BLUE OR RED	BLUE OR RED	BLUE OR RED	BLUE OR RED	BLUE OR RED	BLUE OR RED	BLUE OR RED	BLUE OR RED	BLUE OR RED	BLUE OR RED	BLUE OR RED
50	BLUE OR RED	BLUE OR RED	BLUE OR RED	BLUE OR RED	BLUE OR RED	BLUE OR RED	BLUE OR RED	BLUE OR RED	BLUE OR RED	BLUE OR RED	BLUE OR RED	BLUE OR RED	BLUE OR RED	GREEN OR YELLOW	BLUE OR RED	BLUE OR RED
60	BLUE OR RED	BLUE OR RED	GREEN OR YELLOW	BLUE OR RED	BLUE OR RED	BLUE OR RED	GREEN OR YELLOW	BLUE OR RED	BLUE OR RED	GREEN OR YELLOW	GREEN OR YELLOW	BLUE OR RED	BLUE OR RED	GREEN OR YELLOW	GREEN OR YELLOW	BLUE OR RED
70	GREEN OR YELLOW	BLUE OR RED	GREEN OR YELLOW	GREEN OR YELLOW	GREEN OR YELLOW	GREEN OR YELLOW	GREEN OR YELLOW	GREEN OR YELLOW	GREEN OR YELLOW	GREEN OR YELLOW	GREEN OR YELLOW	GREEN OR YELLOW	GREEN OR YELLOW	GREEN OR YELLOW	GREEN OR YELLOW	GREEN OR YELLOW

NOTES:

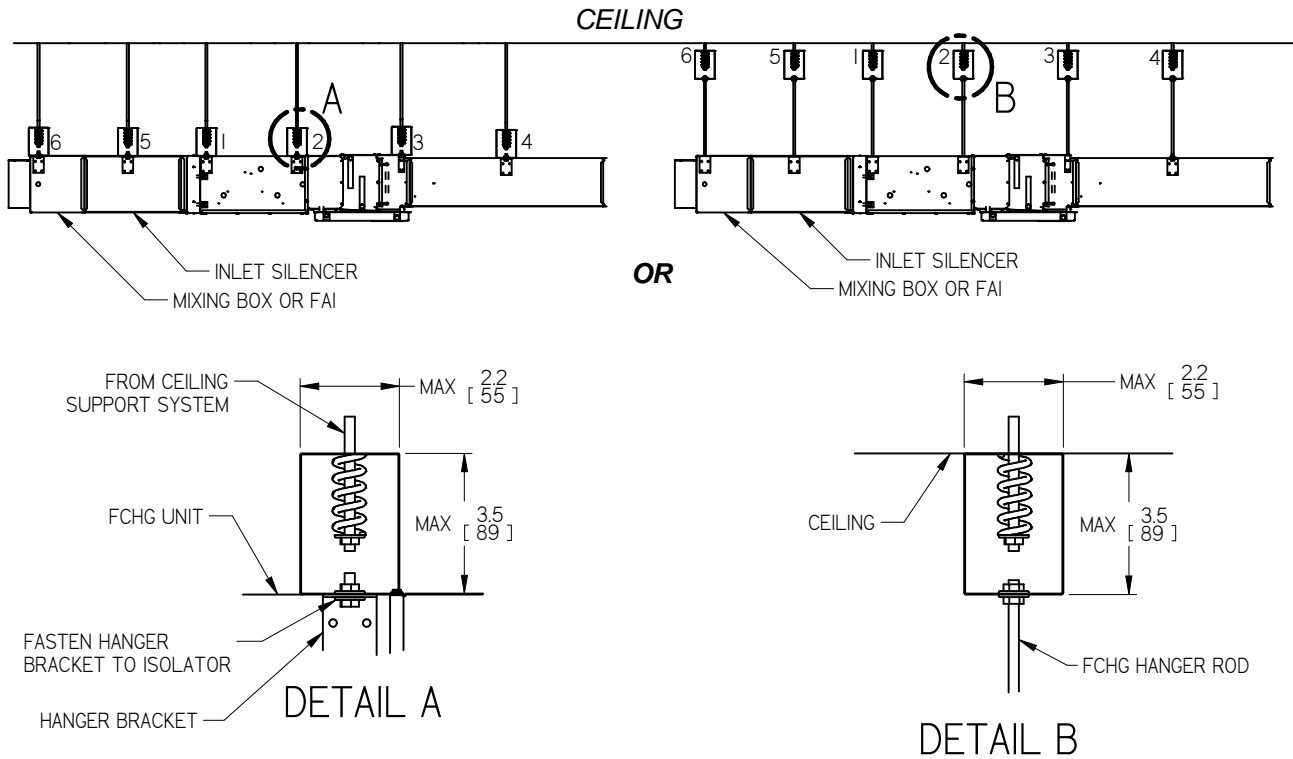
- REFER TO DRAWING 255512 FOR HANGER BRACKET LOCATIONS AND TYPE (A or B) BASED ON UNIT SIZE
- RED HANGER BRACKETS RATED TO A MAXIMUM OF 35 LB
- YELLOW HANGER BRACKETS RATED TO A MAXIMUM OF 65 LB
- RED HANGER BRACKETS RATED TO A MAXIMUM OF 39 LB
- YELLOW HANGER BRACKETS RATED TO A MAXIMUM OF 68 LB
- HANGER BRACKETS AND SPRING BRACKETS ARE SHIPPED LOOSE FOR FIELD INSTALLATION
- ORIENT THE ISOLATOR AS SHOWN TO PROPERLY DAMPEN FAN COIL

ALL METRIC DIMENSIONS () ARE SOFT CONVERTED. IMPERIAL DIMENSIONS ARE CONVERTED TO METRIC AND ROUNDED TO THE NEAREST MILLIMETER.



PROJECT:		 FCHGQ WITH INLET SILENCER SPRING HANGER BRACKET INSTALLATION
ENGINEER:		
CUSTOMER:		
SUBMITTAL DATE:	SPEC. SYMBOL:	
		 261088 2017/03/04

SPRING HANGER BRACKET LOCATIONS



FCHGQ SPRING BRACKET COLORS																				
COIL	1-4 ROW					5 ROW					6 & 7 ROW					8 ROW				
BRACKET #	1&2	3	4	5	6	1&2	3	4	5	6	1&2	3	4	5	6	1&2	3	4	5	6
20-40	BLUE OR RED	BLUE OR RED	BLUE OR RED	BLUE OR RED	BLUE OR RED	BLUE OR RED	BLUE OR RED	BLUE OR RED	BLUE OR RED	BLUE OR RED	BLUE OR RED	BLUE OR RED	BLUE OR RED	BLUE OR RED	BLUE OR RED	BLUE OR RED	BLUE OR RED	BLUE OR RED	BLUE OR RED	BLUE OR RED
50	BLUE OR RED	BLUE OR RED	BLUE OR RED	BLUE OR RED	BLUE OR RED	BLUE OR RED	BLUE OR RED	BLUE OR RED	BLUE OR RED	BLUE OR RED	BLUE OR RED	BLUE OR RED	BLUE OR RED	BLUE OR RED	BLUE OR RED	BLUE OR RED	GREEN OR YELLOW	BLUE OR RED	BLUE OR RED	BLUE OR RED
60	BLUE OR RED	BLUE OR RED	GREEN OR YELLOW	BLUE OR RED	BLUE OR RED	BLUE OR RED	BLUE OR RED	GREEN OR YELLOW	BLUE OR RED	BLUE OR RED	BLUE OR RED	GREEN OR YELLOW	GREEN OR YELLOW	BLUE OR RED	BLUE OR RED	BLUE OR RED	GREEN OR YELLOW	GREEN OR YELLOW	BLUE OR RED	BLUE OR RED
70	GREEN OR YELLOW	BLUE OR RED	GREEN OR YELLOW	GREEN OR YELLOW	BLUE OR RED	GREEN OR YELLOW	GREEN OR YELLOW	GREEN OR YELLOW	GREEN OR YELLOW	BLUE OR RED	GREEN OR YELLOW	GREEN OR YELLOW	GREEN OR YELLOW	GREEN OR YELLOW	BLUE OR RED	GREEN OR YELLOW	GREEN OR YELLOW	GREEN OR YELLOW	GREEN OR YELLOW	BLUE OR RED

NOTES:

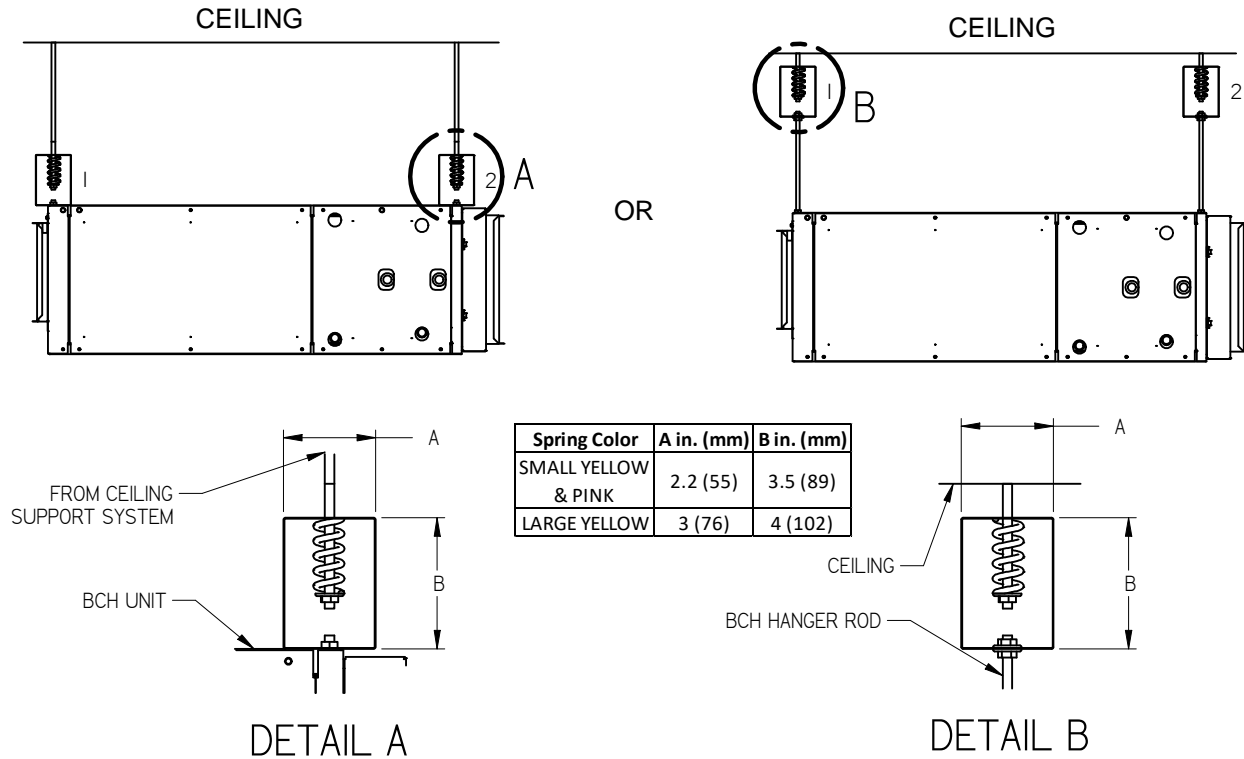
- REFER TO DRAWING 255512 FOR HANGER BRACKET LOCATIONS AND TYPE (A or B) BASED ON UNIT SIZE
- BLUE HANGER BRACKETS RATED TO A MAXIMUM OF 35 LB
- GREEN HANGER BRACKETS RATED TO A MAXIMUM OF 66 LB
- RED HANGER BRACKETS RATED TO A MAXIMUM OF 39 LB
- YELLOW HANGER BRACKETS RATED TO A MAXIMUM OF 68 LB
- HANGER BRACKETS AND SPRING BRACKETS ARE SHIPPED LOOSE FOR FIELD INSTALLATION
- ORIENT THE ISOLATOR AS SHOWN TO PROPERLY DAMPEN FAN COIL

ALL METRIC DIMENSIONS () ARE SOFT CONVERTED. IMPERIAL DIMENSIONS ARE CONVERTED TO METRIC AND ROUNDED TO THE NEAREST MILLIMETER.



PROJECT:		<div>price®</div>	
ENGINEER:		<div>GF</div>	<div>FCHGQ WITH MIXING BOX OR FAI AND INLET SILENCER SPRING HANGER BRACKET INSTALLATION</div>
CUSTOMER:		261088	
SUBMITTAL DATE:	SPEC. SYMBOL:	2017/03/04	

SPRING HANGER BRACKET LOCATIONS



BCH SPRING BRACKET COLORS (BASE UNIT)

Size	1 Row	2 Row	3 Row	4 Row	5 Row	6 Row	7 Row	8 Row	9 Row	10 Row
BRACKET #	1&2	1&2	1&2	1&2	1&2	1&2	1&2	1&2	1&2	1&2
08	GREEN OR SMALL YELLOW	GREEN OR SMALL YELLOW	GREEN OR SMALL YELLOW	GREEN OR SMALL YELLOW	GREEN OR SMALL YELLOW	GREEN OR SMALL YELLOW	GREEN OR SMALL YELLOW	GREEN OR SMALL YELLOW	GREEN OR SMALL YELLOW	GREEN OR SMALL YELLOW
12	GREEN OR SMALL YELLOW	GREEN OR SMALL YELLOW	GREEN OR SMALL YELLOW	GREEN OR SMALL YELLOW	GREEN OR SMALL YELLOW	GREEN OR SMALL YELLOW	GREEN OR SMALL YELLOW	GREEN OR SMALL YELLOW	GREEN OR SMALL YELLOW	GRAY OR SMALL YELLOW
16	GREEN OR SMALL YELLOW	GREEN OR SMALL YELLOW	GREEN OR SMALL YELLOW	GRAY OR SMALL YELLOW	GRAY OR PINK	GRAY OR PINK	GRAY OR PINK	GRAY OR PINK	GRAY OR PINK	GRAY OR PINK
20	GRAY OR SMALL YELLOW	GRAY OR SMALL YELLOW	GRAY OR PINK	GRAY OR PINK	GRAY OR PINK	GRAY OR PINK	GRAY OR PINK	GRAY OR PINK	GRAY OR PINK	GRAY OR PINK
30	GRAY OR PINK	GRAY OR PINK	GRAY OR PINK	GRAY OR PINK	GRAY OR PINK	GRAY OR PINK	GRAY OR PINK	GRAY OR PINK	GRAY OR PINK	BROWN OR PINK
40	GRAY OR PINK	GRAY OR PINK	GRAY OR PINK	BROWN OR PINK	BROWN OR PINK	BROWN OR PINK	BROWN OR PINK	BROWN OR PINK	BROWN OR PINK	BROWN OR PINK

NOTES:

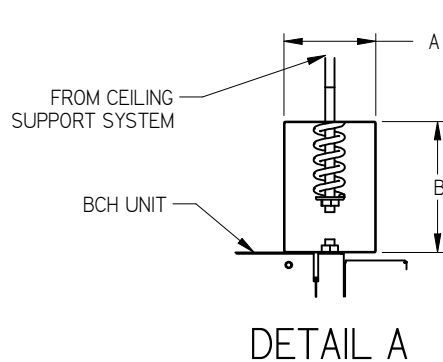
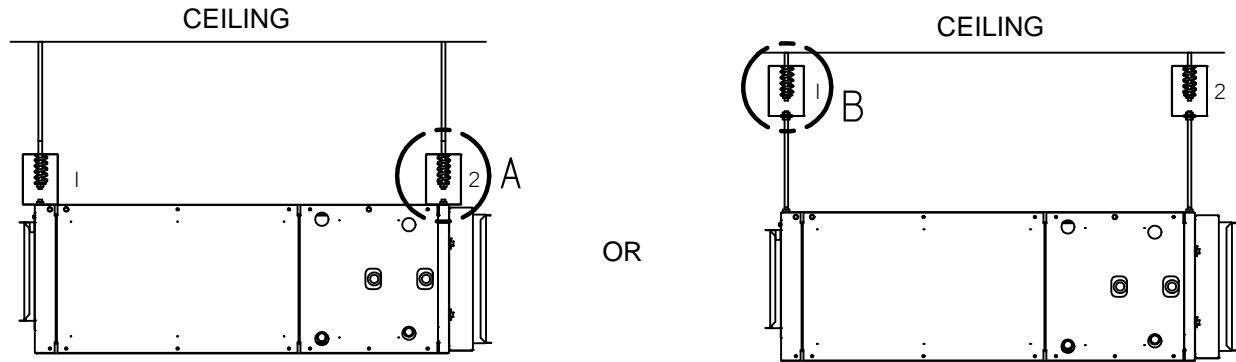
- SMALL YELLOW SPRING HANGER BRACKETS RATED TO A MAXIMUM OF 68LB
- PINK SPRING HANGER BRACKETS RATED TO A MAXIMUM OF 177 LB
- LARGE YELLOW SPRING HANGER BRACKETS RATED TO A MAXIMUM OF 295 LB
- SPRING BRACKETS ARE SHIPPED LOOSE FOR FIELD INSTALLATION
- ORIENT THE ISOLATOR AS SHOWN TO PROPERLY DAMPEN BLOWER COIL



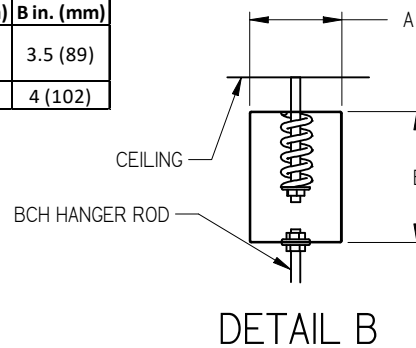
ALL METRIC DIMENSIONS () ARE SOFT CONVERTED. IMPERIAL DIMENSIONS ARE CONVERTED TO METRIC AND ROUNDED TO THE NEAREST MILLIMETER.

PROJECT:		price	
ENGINEER:		GF	BCH SPRING HANGER BRACKET INSTALLATION BASE UNIT
CUSTOMER:			
SUBMITTAL DATE:			
SPEC. SYMBOL:		264588	
		2017/04/11	

SPRING HANGER BRACKET LOCATIONS



Spring Color	A in. (mm)	B in. (mm)
SMALL YELLOW & PINK	2.2 (55)	3.5 (89)
LARGE YELLOW	3 (76)	4 (102)



BCH SPRING BRACKET COLORS (WITH SM LINER)										
Size	1 Row	2 Row	3 Row	4 Row	5 Row	6 Row	7 Row	8 Row	9 Row	10 Row
BRACKET #	1&2	1&2	1&2	1&2	1&2	1&2	1&2	1&2	1&2	1&2
08	GREEN OR SMALL YELLOW	GREEN OR SMALL YELLOW	GREEN OR SMALL YELLOW	GREEN OR SMALL YELLOW	GREEN OR SMALL YELLOW	GREEN OR SMALL YELLOW	GREEN OR SMALL YELLOW	GRAY OR SMALL YELLOW	GRAY OR SMALL YELLOW	GRAY OR PINK
12	GRAY OR SMALL YELLOW	GRAY OR SMALL YELLOW	GRAY OR PINK	GRAY OR PINK	GRAY OR PINK	GRAY OR PINK	GRAY OR PINK	GRAY OR PINK	GRAY OR PINK	GRAY OR PINK
16	GRAY OR PINK	GRAY OR PINK	GRAY OR PINK	GRAY OR PINK	GRAY OR PINK	GRAY OR PINK	GRAY OR PINK	GRAY OR PINK	GRAY OR PINK	GRAY OR PINK
20	GRAY OR PINK	GRAY OR PINK	GRAY OR PINK	GRAY OR PINK	GRAY OR PINK	GRAY OR PINK	GRAY OR PINK	GRAY OR PINK	GRAY OR PINK	GRAY OR PINK
30	GRAY OR PINK	GRAY OR PINK	BROWN OR PINK	BROWN OR PINK	BROWN OR PINK	BROWN OR PINK	BROWN OR PINK	BROWN OR PINK	BROWN OR PINK	BROWN OR PINK
40	BROWN OR PINK	BROWN OR PINK	BROWN OR PINK	BROWN OR PINK	BROWN OR LARGE YELLOW	BROWN OR LARGE YELLOW	BROWN OR LARGE YELLOW	BROWN OR LARGE YELLOW	BROWN OR LARGE YELLOW	BROWN OR LARGE YELLOW

NOTES:

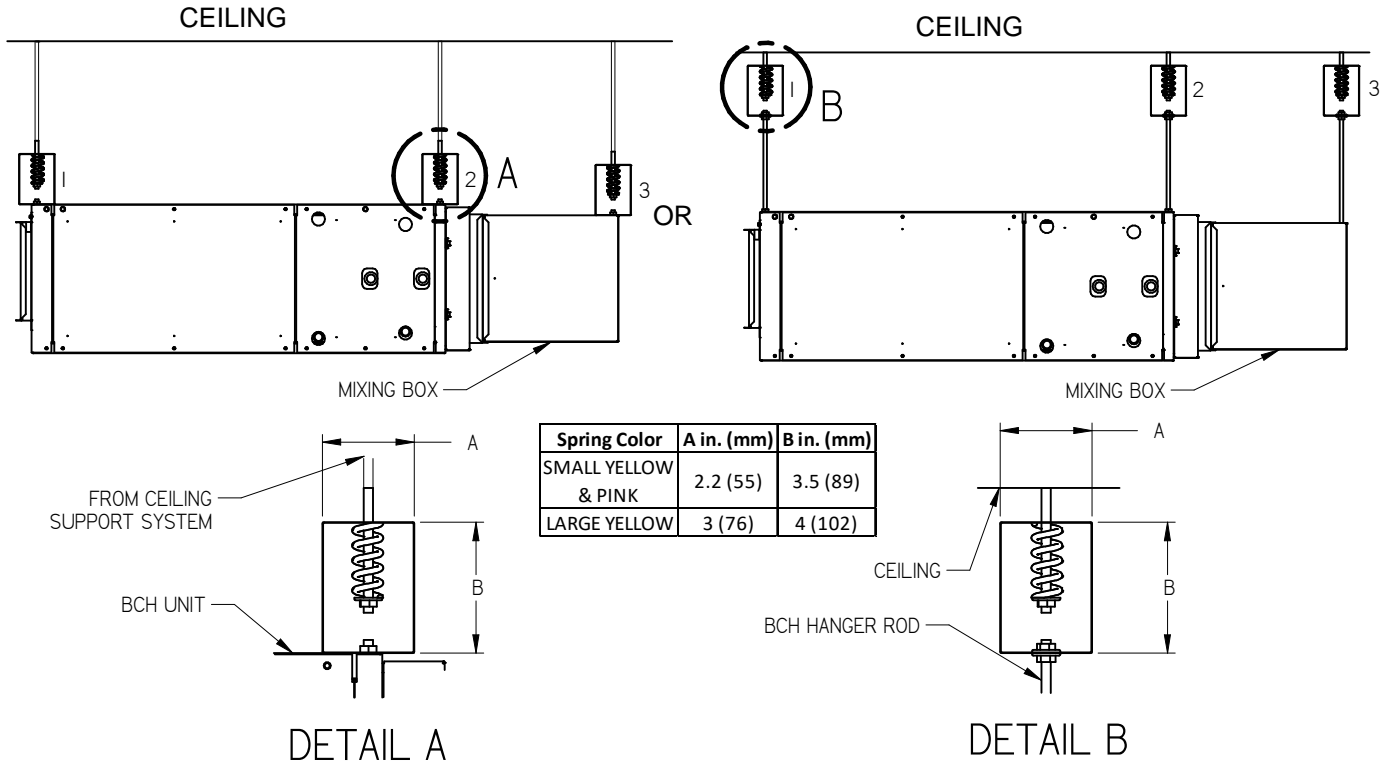
- SMALL YELLOW SPRING HANGER BRACKETS RATED TO A MAXIMUM OF 68LB
- PINK SPRING HANGER BRACKETS RATED TO A MAXIMUM OF 177 LB
- LARGE YELLOW SPRING HANGER BRACKETS RATED TO A MAXIMUM OF 295 LB
- SPRING BRACKETS ARE SHIPPED LOOSE FOR FIELD INSTALLATION
- ORIENT THE ISOLATOR AS SHOWN TO PROPERLY DAMPEN BLOWER COIL



ALL METRIC DIMENSIONS () ARE SOFT CONVERTED. IMPERIAL DIMENSIONS ARE CONVERTED TO METRIC AND ROUNDED TO THE NEAREST MILLIMETER.

PROJECT:		price	
ENGINEER:		GF	BCH SPRING HANGER BRACKET INSTALLATION W/ SM LINER
CUSTOMER:			
SUBMITTAL DATE:			
SPEC. SYMBOL:		264588	
		2017/04/11	

SPRING HANGER BRACKET LOCATIONS



BCH SPRING BRACKET COLORS (BASE UNIT)											
Size	1 Row	2 Row	3 Row	4 Row	5 Row	6 Row	7 Row	8 Row	9 Row	10 Row	W/ Mixing Box
BRACKET #	1&2	1&2	1&2	1&2	1&2	1&2	1&2	1&2	1&2	1&2	3
08	GREEN OR SMALL YELLOW	GREEN OR SMALL YELLOW	GREEN OR SMALL YELLOW	GREEN OR SMALL YELLOW	GREEN OR SMALL YELLOW	GREEN OR SMALL YELLOW	GREEN OR SMALL YELLOW	GREEN OR SMALL YELLOW	GREEN OR SMALL YELLOW	GREEN OR SMALL YELLOW	GREEN OR SMALL YELLOW
12	GREEN OR SMALL YELLOW	GREEN OR SMALL YELLOW	GREEN OR SMALL YELLOW	GREEN OR SMALL YELLOW	GREEN OR SMALL YELLOW	GREEN OR SMALL YELLOW	GREEN OR SMALL YELLOW	GREEN OR SMALL YELLOW	GREEN OR SMALL YELLOW	GREEN OR SMALL YELLOW	GREEN OR SMALL YELLOW
16	GREEN OR SMALL YELLOW	GREEN OR SMALL YELLOW	GREEN OR SMALL YELLOW	GRAY OR SMALL YELLOW	GRAY OR PINK	GRAY OR PINK	GRAY OR PINK	GRAY OR PINK	GRAY OR PINK	GRAY OR PINK	GREEN OR SMALL YELLOW
20	GRAY OR SMALL YELLOW	GRAY OR SMALL YELLOW	GRAY OR PINK	GRAY OR PINK	GRAY OR PINK	GRAY OR PINK	GRAY OR PINK	GRAY OR PINK	GRAY OR PINK	GRAY OR PINK	GREEN OR SMALL YELLOW
30	GRAY OR PINK	GRAY OR PINK	GRAY OR PINK	GRAY OR PINK	GRAY OR PINK	GRAY OR PINK	GRAY OR PINK	GRAY OR PINK	GRAY OR PINK	BROWN OR PINK	GREEN OR SMALL YELLOW
40	GRAY OR PINK	GRAY OR PINK	GRAY OR PINK	BROWN OR PINK	BROWN OR PINK	BROWN OR PINK	BROWN OR PINK	BROWN OR PINK	BROWN OR PINK	BROWN OR PINK	GREEN OR SMALL YELLOW

NOTES:

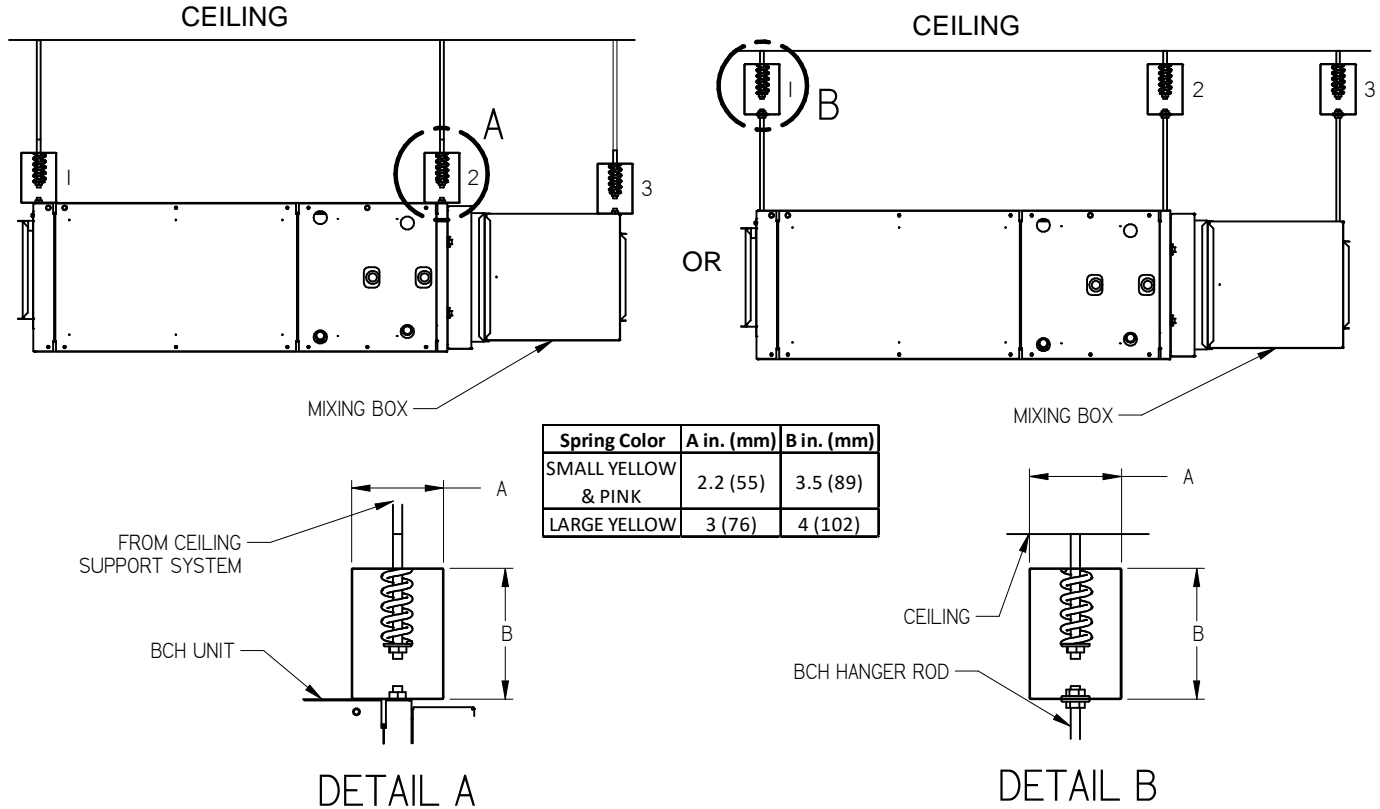
- SMALL YELLOW SPRING HANGER BRACKETS RATED TO A MAXIMUM OF 68LB
- PINK SPRING HANGER BRACKETS RATED TO A MAXIMUM OF 177 LB
- LARGE YELLOW SPRING HANGER BRACKETS RATED TO A MAXIMUM OF 295 LB
- SPRING BRACKETS ARE SHIPPED LOOSE FOR FIELD INSTALLATION
- ORIENT THE ISOLATOR AS SHOWN TO PROPERLY DAMPEN BLOWER COIL



ALL METRIC DIMENSIONS () ARE SOFT CONVERTED. IMPERIAL DIMENSIONS ARE CONVERTED TO METRIC AND ROUNDED TO THE NEAREST MILLIMETER.

PROJECT:		price	
ENGINEER:			BCH SPRING HANGER BRACKET INSTALLATION BASE UNIT W/ MIXING BOX
CUSTOMER:			
SUBMITTAL DATE:			
SPEC. SYMBOL:		264588	
		2017/04/11	

SPRING HANGER BRACKET LOCATIONS



BCH SPRING BRACKET COLORS (WITH SM LINER)											
Size	1 Row	2 Row	3 Row	4 Row	5 Row	6 Row	7 Row	8 Row	9 Row	10 Row	W / Mixing Box
BRACKET #	1&2	1&2	1&2	1&2	1&2	1&2	1&2	1&2	1&2	1&2	3
08	GREEN OR SMALL YELLOW	GREEN OR SMALL YELLOW	GREEN OR SMALL YELLOW	GREEN OR SMALL YELLOW	GREEN OR SMALL YELLOW	GREEN OR SMALL YELLOW	GREEN OR SMALL YELLOW	GRAY OR SMALL YELLOW	GRAY OR SMALL YELLOW	GRAY OR PINK	GREEN OR SMALL YELLOW
12	GRAY OR SMALL YELLOW	GRAY OR SMALL YELLOW	GRAY OR PINK	GRAY OR PINK	GRAY OR PINK	GRAY OR PINK	GRAY OR PINK	GRAY OR PINK	GRAY OR PINK	GRAY OR PINK	GREEN OR SMALL YELLOW
16	GRAY OR PINK	GRAY OR PINK	GRAY OR PINK	GRAY OR PINK	GRAY OR PINK	GRAY OR PINK	GRAY OR PINK	GRAY OR PINK	GRAY OR PINK	GRAY OR PINK	GREEN OR SMALL YELLOW
20	GRAY OR PINK	GRAY OR PINK	GRAY OR PINK	GRAY OR PINK	GRAY OR PINK	GRAY OR PINK	GRAY OR PINK	GRAY OR PINK	GRAY OR PINK	GRAY OR PINK	GREEN OR SMALL YELLOW
30	GRAY OR PINK	GRAY OR PINK	BROWN OR PINK	BROWN OR PINK	BROWN OR PINK	BROWN OR PINK	BROWN OR PINK	BROWN OR PINK	BROWN OR PINK	BROWN OR PINK	GREEN OR SMALL YELLOW
40	BROWN OR PINK	BROWN OR PINK	BROWN OR PINK	BROWN OR PINK	BROWN OR LARGE YELLOW	BROWN OR LARGE YELLOW	BROWN OR LARGE YELLOW	BROWN OR LARGE YELLOW	BROWN OR LARGE YELLOW	BROWN OR LARGE YELLOW	GREEN OR SMALL YELLOW

NOTES:

- SMALL YELLOW SPRING HANGER BRACKETS RATED TO A MAXIMUM OF 68LB
- PINK SPRING HANGER BRACKETS RATED TO A MAXIMUM OF 177 LB
- LARGE YELLOW SPRING HANGER BRACKETS RATED TO A MAXIMUM OF 295 LB
- SPRING BRACKETS ARE SHIPPED LOOSE FOR FIELD INSTALLATION
- ORIENT THE ISOLATOR AS SHOWN TO PROPERLY DAMPEN BLOWER COIL



ALL METRIC DIMENSIONS () ARE SOFT CONVERTED. IMPERIAL DIMENSIONS ARE CONVERTED TO METRIC AND ROUNDED TO THE NEAREST MILLIMETER.

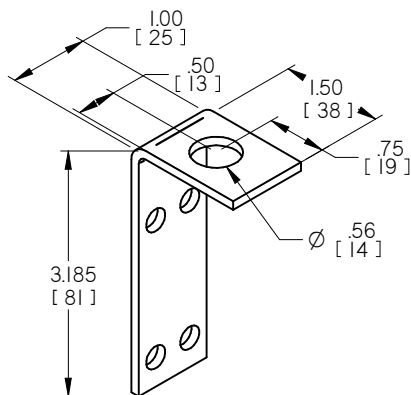
PROJECT:		price	
ENGINEER:			
CUSTOMER:		GF	BCH SPRING HANGER BRACKET INSTALLATION W/ SM LINER & MIXING BOX
SUBMITTAL DATE:			
SPEC. SYMBOL:		264588	
		2017/04/11	

HANGER BRACKETS (HB) LOCATION

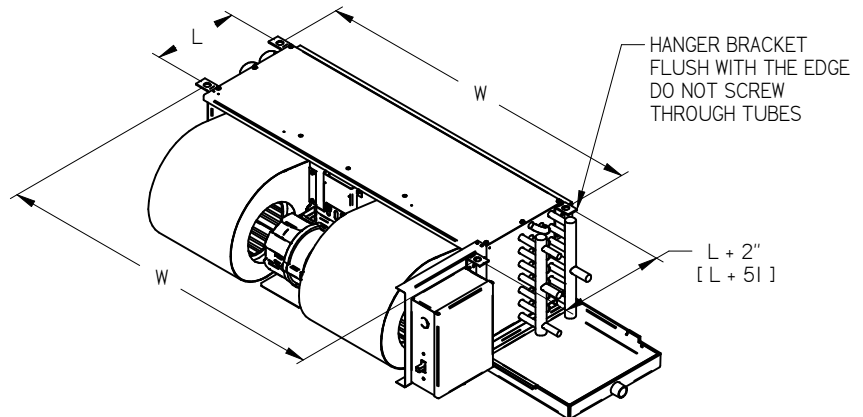
COOLING OR HEATING ONLY			
UNIT SIZE	W in. (mm)	L in. (mm)	
		1 & 2 ROW	3 & 4 ROW
02	17 1/2" (445)	3" (76)	8" (203)
03	21 1/2" (546)		
04	26 1/2" (673)		
06	31 1/2" (800)		
08	41 1/2" (1054)		
10	51 1/2" (1308)		
12	61 1/2" (1562)		
COOLING & HEATING (PREHEAT OR REHEAT)			
UNIT SIZE	W in. (mm)	L in. (mm)	
		3/1, 3/2, 4/1, 4/2, 1/3, 1/4, 2/3, 2/4	
02	17 1/2" (445)	12" (305)	
03	21 1/2" (546)		
04	26 1/2" (673)		
06	31 1/2" (800)		
08	41 1/2" (1054)		
10	51 1/2" (1308)		
12	61 1/2" (1562)		

NOTES:

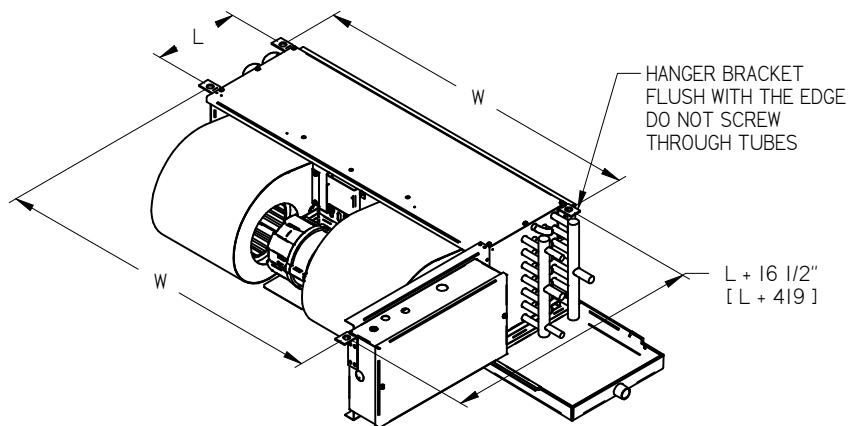
- HANGER BRACKETS ARE 12 GAUGE ZINC COATED STEEL.
- 4 BRACKETS PER FAN UNIT.
- BRACKETS ARE SHIPPED LOOSE FOR FIELD INSTALLATION FOR USE WITH THREADED RODS. (BY OTHERS)
- LAYOUT INDICATES SUGGESTED HANGER BRACKET LOCATIONS.
- HANGER BRACKETS TO BE FLUSH WITH TOP OF UNIT.



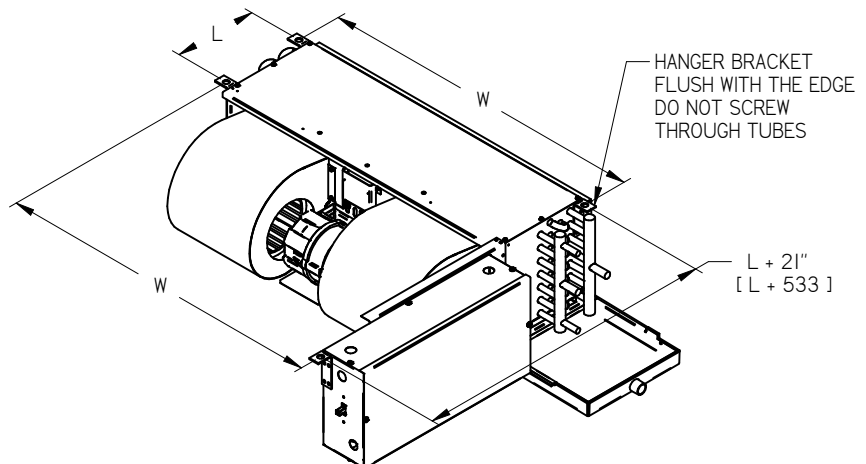
HANGER BRACKETS (HB)
PRICE PART #: 247895



JUNCTION BOX (J-BOX)





ELECTRICAL BOX (EL-BOX)



PROTECTIVE SHROUD (PS)

ALL METRIC DIMENSIONS () ARE SOFT CONVERTED. IMPERIAL DIMENSIONS ARE CONVERTED TO METRIC AND ROUNDED TO THE NEAREST MILLIMETER.

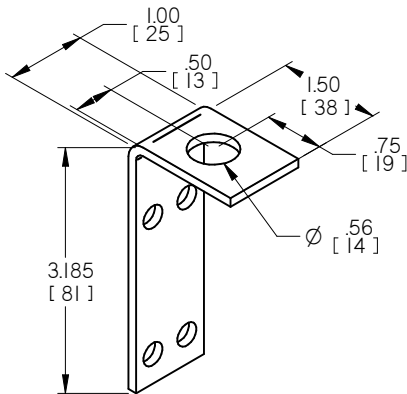
PROJECT:		 FAN COIL FCH HANGER BRACKET LOCATIONS (HB) CONCEALED (C) CONFIGURATION
ENGINEER:		
CUSTOMER:		
SUBMITTAL DATE:	SPEC. SYMBOL:	
		 269131 2017/11/14

HANGER BRACKETS (HB) LOCATION

COOLING OR HEATING ONLY				
UNIT SIZE	W in. (mm)	X in. (mm)	L in. (mm)	
			1 & 2 ROW	3 & 4 ROW
02	17 1/2" (445)	19 1/2" (495)	14 1/2" (368)	19 1/2" (495)
03	21 1/2" (546)	21 1/2" (546)		
04	26 1/2" (673)	28 1/2" (724)		
06	31 1/2" (800)	33 1/2" (851)		
08	41 1/2" (1054)	41 1/2" (1054)		
10	51 1/2" (1308)	51 1/2" (1308)		
12	61 1/2" (1562)	61 1/2" (1562)		
COOLING & HEATING (PREHEAT OR REHEAT)				
UNIT SIZE	W in. (mm)	X in. (mm)	L in. (mm)	
			3/1, 3/2, 4/1, 4/2, 1/3, 1/4, 2/3, 2/4	
02	17 1/2" (445)	19 1/2" (495)	23 1/2" (597)	
03	21 1/2" (546)	21 1/2" (546)		
04	26 1/2" (673)	28 1/2" (724)		
06	31 1/2" (800)	33 1/2" (851)		
08	41 1/2" (1054)	41 1/2" (1054)		
10	51 1/2" (1308)	51 1/2" (1308)		
12	61 1/2" (1562)	61 1/2" (1562)		

NOTES:

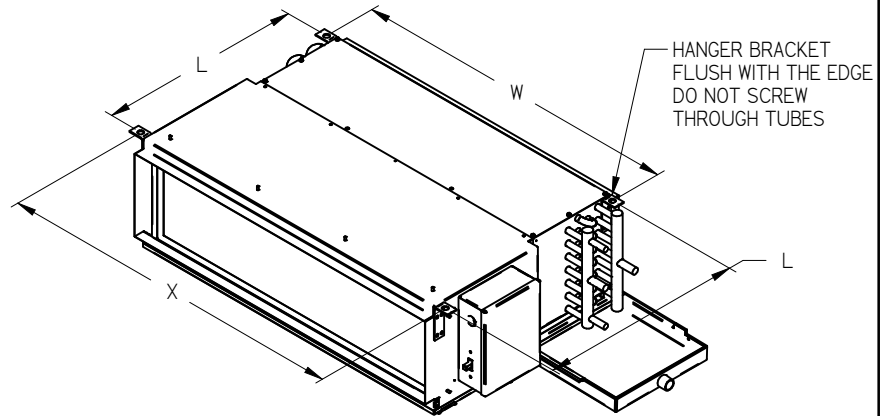
- HANGER BRACKETS ARE 12 GAUGE ZINC COATED STEEL.
- 4 BRACKETS PER FAN UNIT.
- BRACKETS ARE SHIPPED LOOSE FOR FIELD INSTALLATION FOR USE WITH THREADED RODS. (BY OTHERS)
- LAYOUT INDICATES SUGGESTED HANGER BRACKET LOCATIONS.
- HANGER BRACKETS TO BE FLUSH WITH TOP OF UNIT.



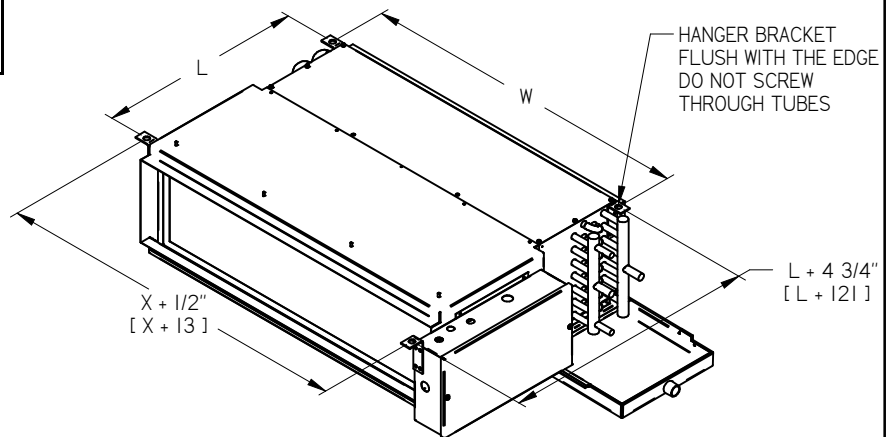
HANGER BRACKETS (HB)
PRICE PART #: 247895



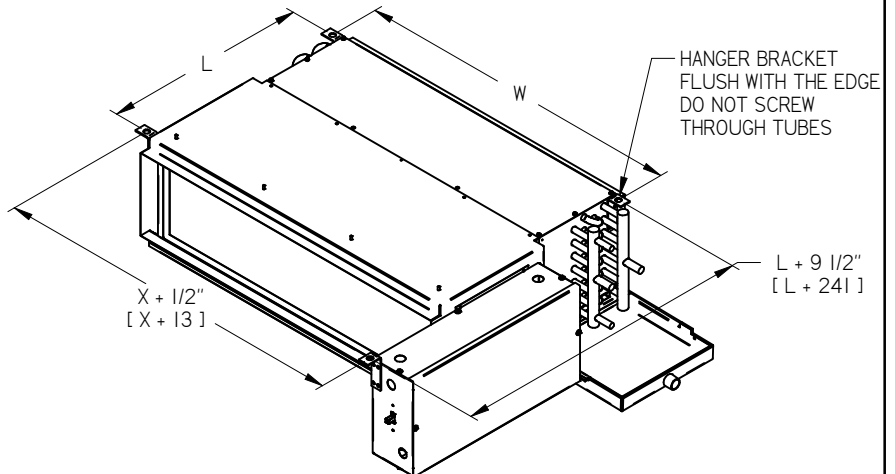
ALL METRIC DIMENSIONS () ARE SOFT CONVERTED. IMPERIAL DIMENSIONS ARE CONVERTED TO METRIC AND ROUNDED TO THE NEAREST MILLIMETER.



JUNCTION BOX (J-BOX)



ELECTRICAL BOX (EL-BOX)



PROTECTIVE SHROUD (PS)

PROJECT:		PRICE	FAN COIL FCH
ENGINEER:			
CUSTOMER:		GF	HANGER BRACKET LOCATIONS (HB)
SUBMITTAL DATE:		269131	
SPEC. SYMBOL:		2017/11/14	CONCEALED PLENUM (CP) CONFIGURATION