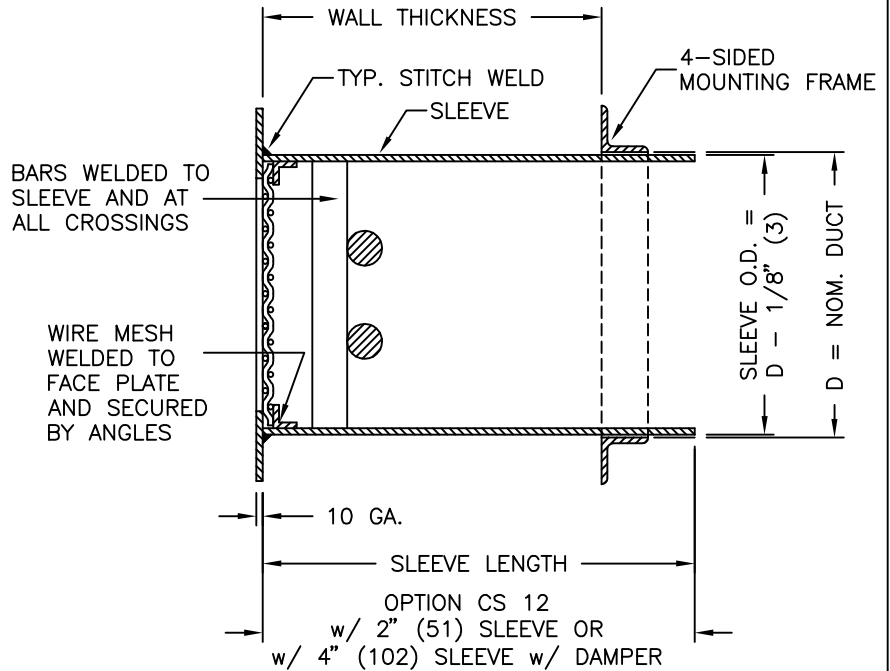
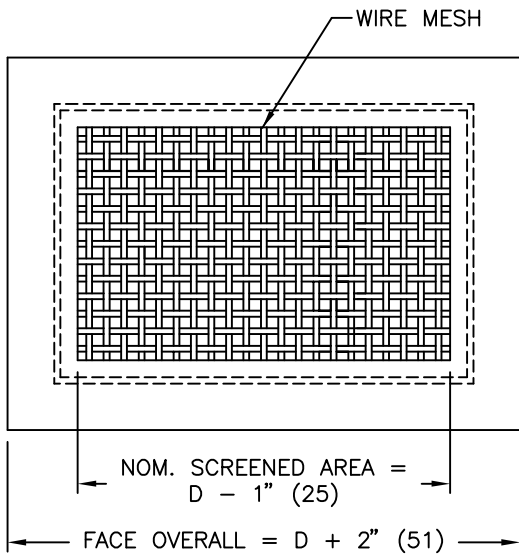


MSSG - MEDIUM SECURITY SCREENED GRILLE



STANDARD CONSTRUCTION:

FACE PLATE:

FP10 10 GA. HOT ROLLED STEEL (HRS)

OPTIONS:

- FP187 3/16" (5)
- FP12 12 GA.
- FP14 14 GA.

WIRE MESH:

WM 10 GA. X 3/8" (10) CLEAR OPENING STEEL WIRE MESH

SLEEVE:

S10 10 GA. HRS, LENGTH AS REQUIRED

STITCH WELDED SEAMS

OPTIONS:

- S187 3/16" (5)
- S12 12 GA.
- S14 14 GA.
- CWS CONTINUOUSLY WELDED SEAMS
- OPTION S5 (NOT AVAILABLE WITH MOUNTING FRAME - MF)

BARRIER BARS:

BB17 3/4" (19) DIA. HRS BARS WELDED INSIDE SLEEVE ON MAXIMUM 6" (152) VERTICAL AND 12" (305) HORIZONTAL CENTERS AND AT ALL CROSSINGS

OPTIONS:

- BB16
- BB18
- BB19
- BB20
- BB21
- BB22
- BB23

4-SIDED MOUNTING FRAME:

MF3 1" x 1" x 1/8" (25 x 25 x 3) HRS ANGLE (SHIPPED LOOSE FOR FIELD WELDING)

OPTIONS:

- MF1
- MF2
- MF4

FINISH:

B12 WHITE

(OPTIONAL FINISHES AVAILABLE)

ALL METRIC DIMENSIONS () ARE SOFT CONVERTED. IMPERIAL DIMENSIONS ARE CONVERTED TO METRIC AND ROUNDED TO THE NEAREST MILLIMETER.

OPTIONS & ACCESSORIES:

MATERIAL: (ONLY AVAILABLE IN 10 GA. CONSTRUCTION)

- ALL ALUMINUM (MINIMUM SECURITY)
- ALL 304 STAINLESS STEEL

FASTENING METHOD OPTIONS:

- MR6
- MR7
- CS 12 SPNR
- CS 12 TORX
- CS 12 SPNR-SS
- CS 12 TORX-SS

DAMPER OPTIONS:

- 3BF
- 3BR

TRANSFER GRILLE CONSTRUCTION OPTIONS:

- TG14
- TG15

NOTES:

- BARRIER BARS AND MOUNTING FRAMES ARE NOT AVAILABLE WITH OPTION CS
- MINIMUM SIZE = 6" x 6" (152 x 152)
- MAXIMUM SIZE = 30" x 30" (762 x 762)
- SLEEVE LENGTH MUST BE SPECIFIED ON ORDER
- REFER TO SUBMITTAL 233035 FOR OPTIONS
- CONSULT FACTORY FOR SPECIAL OPTIONS

PROJECT:		PRICE®	
ENGINEER:		<i>MG</i>	MSSG MEDIUM SECURITY SCREENED GRILLE
CUSTOMER:		233040	
SUBMITTAL DATE:	SPEC. SYMBOL:	2013/10/21	