

MODULAR CEILING SYSTEM



ISP DESIGN LIGHTING
CONSULTANT

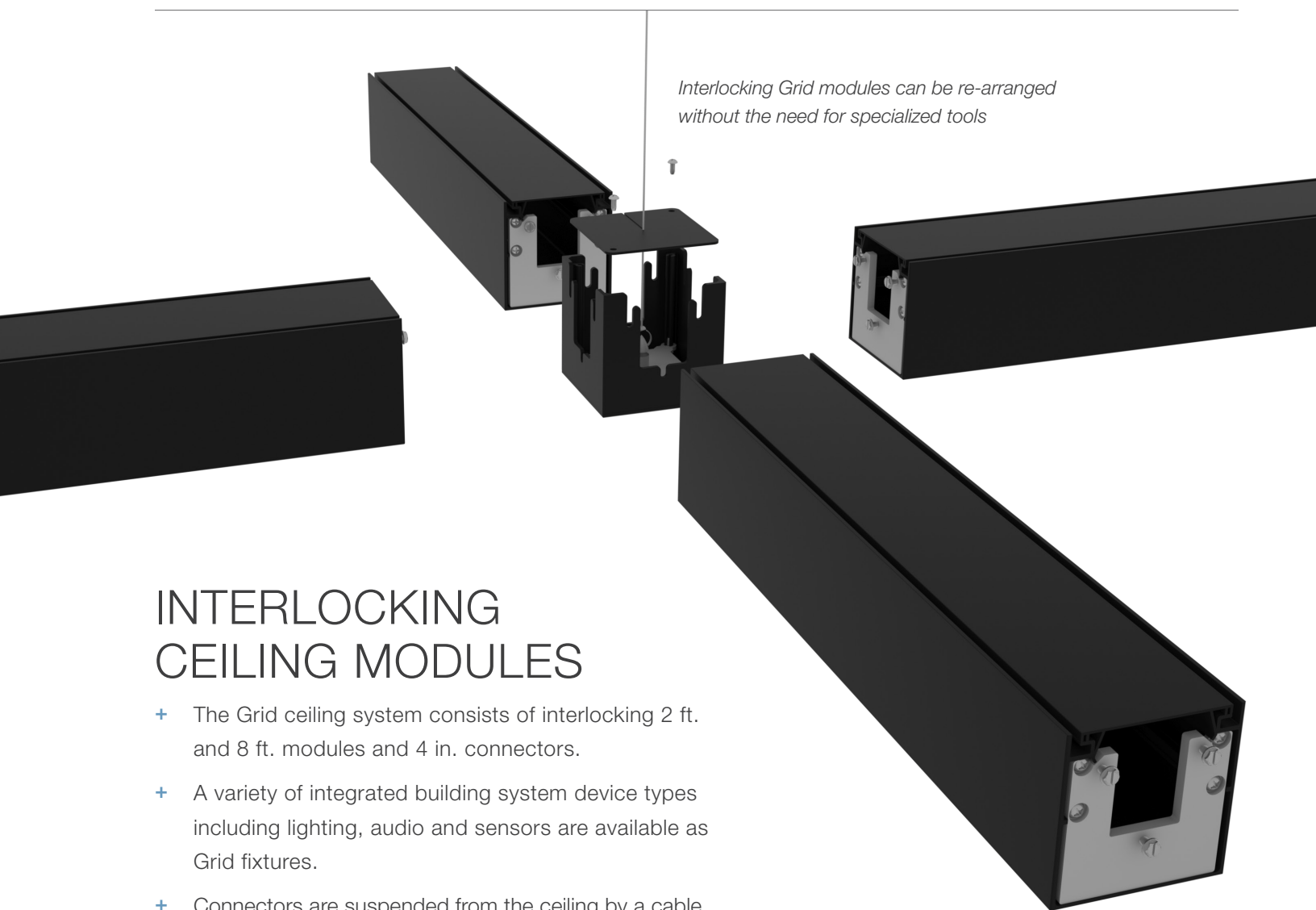
PARC®



MODULAR CEILING SYSTEM

Grid modular ceiling system is a unique building systems and controls solution that features interlocking components for quick and easy installation and reconfiguration to accommodate changing customer needs. Integration of lighting and audio systems allows for single source supply, minimizing installation time and ensuring compatibility of all components and visual consistency throughout.





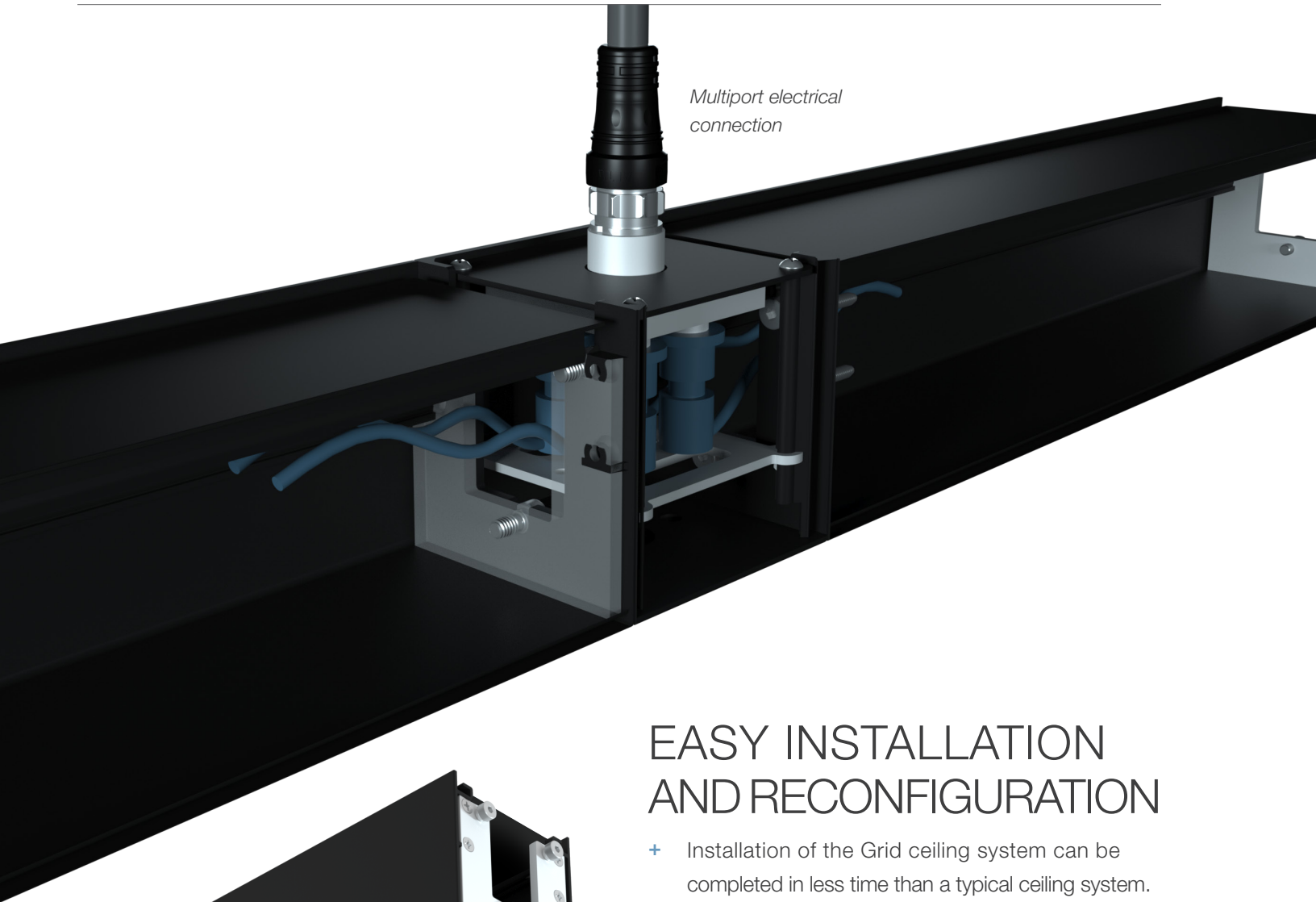
Interlocking Grid modules can be re-arranged without the need for specialized tools

INTERLOCKING CEILING MODULES

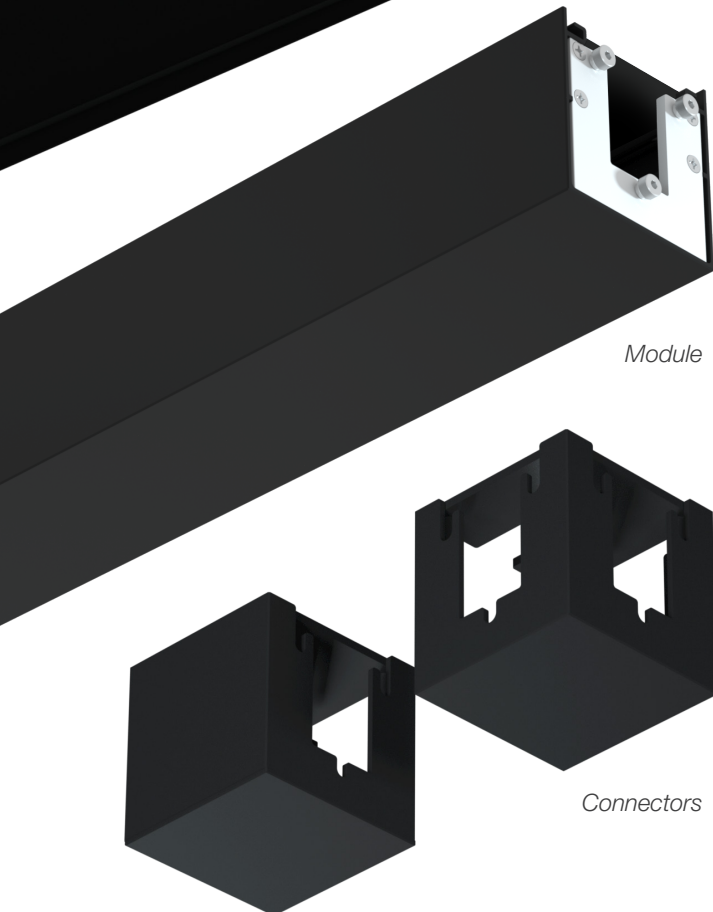
- + The Grid ceiling system consists of interlocking 2 ft. and 8 ft. modules and 4 in. connectors.
- + A variety of integrated building system device types including lighting, audio and sensors are available as Grid fixtures.
- + Connectors are suspended from the ceiling by a cable and may enclose an hybrid multiport that can supply power and communications to up to four devices.

FLEXIBLE LAYOUT

- + The flexible nature of the Grid system is future proof, allowing reconfiguration of all components to accommodate growth or architectural changes.
- + Interlocking connectors, modules, and integrated devices can be reassembled multiple times in various configurations to change the overall shape of the system or the location of fixtures in accordance with shifting requirements.



*Multiport electrical
connection*

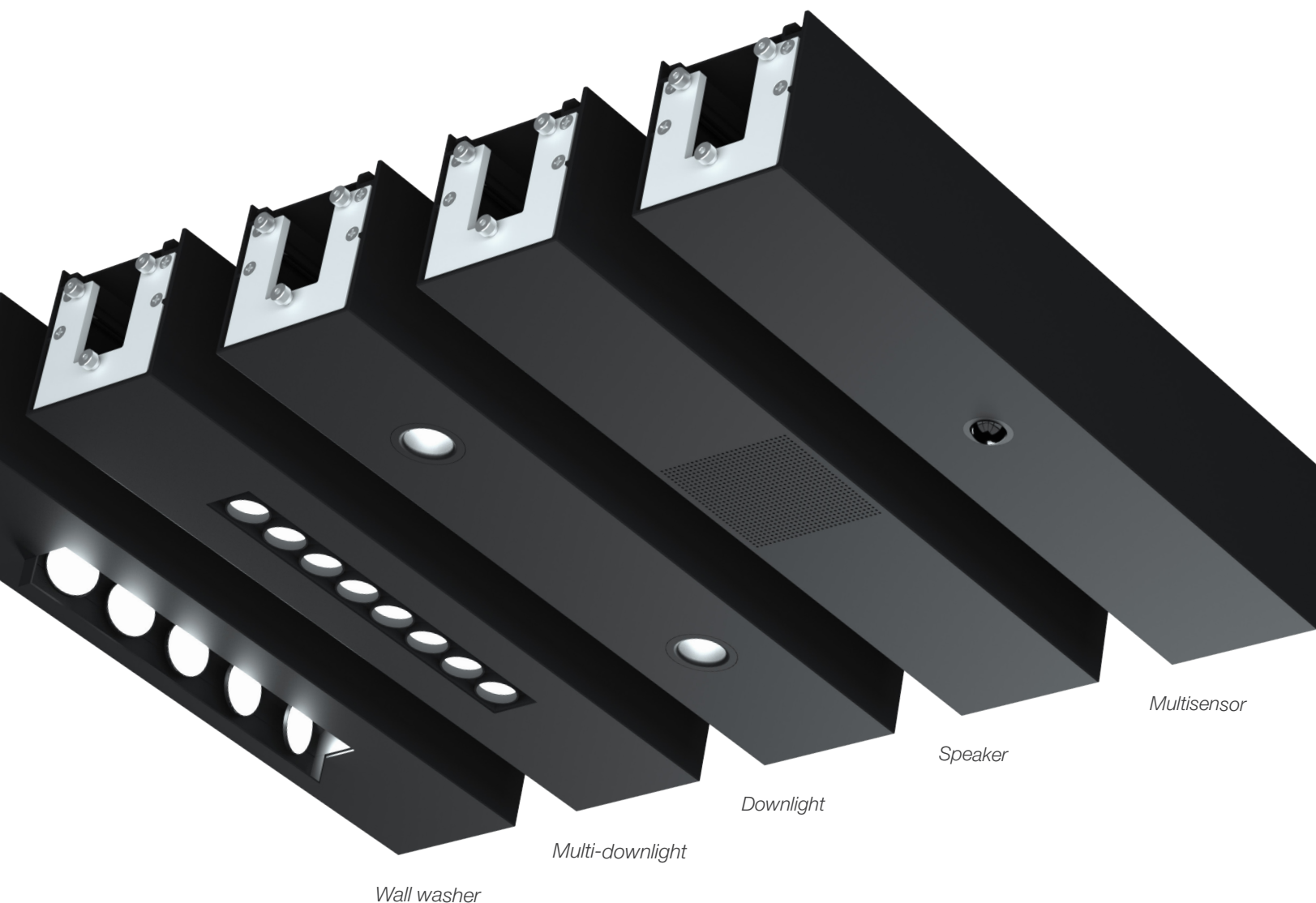


Module

Connectors

EASY INSTALLATION AND RECONFIGURATION

- + Installation of the Grid ceiling system can be completed in less time than a typical ceiling system.
- + Modules and devices feature **interlocking components** that fit with the connector for simple, efficient installation without the need for specialized tools or equipment.
- + All fixtures are low voltage and make use of **quick connect cables**.

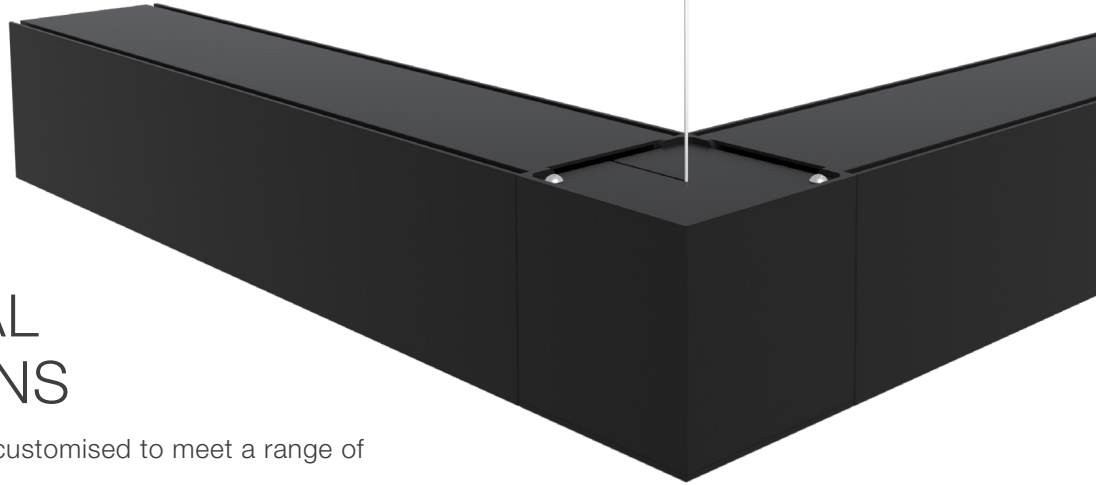


INTEGRATED SERVICES

- + All integrated devices are low voltage and feature quick-connect ports for use with the connectors.
- + A number of building system devices are available including:
 - **Lighting** – a selection of downlight, multi-downlight, and wall washer options are available.
 - **Sensors** - Incorporating ambient light sensors and occupancy sensors in the ceiling system allows lights to dim when ambient light is plentiful and be turned on/off in accordance with room occupancy.
 - **Audio** – ideal for ambient music and PA announcements, Grid audio components feature speakers with 3 inch drivers.



*Ceiling system
suspension*



ARCHITECTURAL CONSIDERATIONS

- + The Grid ceiling system can be customised to meet a range of architectural requirements.
 - **Mounting** – Pendant mounting and myriad layout options easily meet design criteria and allow for integration with various ceiling types without disrupting the original ceiling.
 - **Finish** – All ceiling components and intersections are typically finished in black, however anodized and custom finishes are also available.





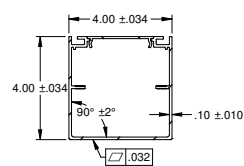
UNPARALLELED CONTROLS SOLUTION

- + All Grid devices are controlled and monitored through the patent pending Total Room Control system. The Total Room Control system combines all devices on a distributively controlled network that:
 - Allows the user to zone, rezone and control all devices from a single wall interface or other device connected to the Total Room Control network.
 - Simplifies wiring and infrastructure for faster, easier installation and maintenance.
 - Allows all device drivers to be located in a single remotely mounted control enclosure, providing easy access for maintenance and replacement.
 - Makes set up, commissioning, and reconfiguring easy with factory-programmed devices and intuitive networking software.

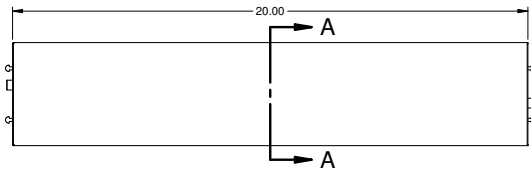


DIMENSIONAL DATA

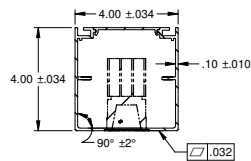
2 ft. Module (Weight 4.8 lbs.)



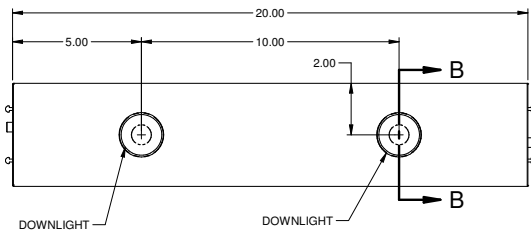
SECTION A-A
ROTATED CCW 90°



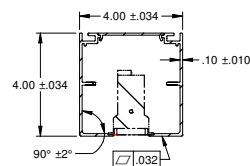
2 ft. Downlight Module (Weight 5.7 lbs.)



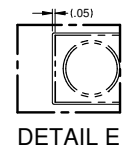
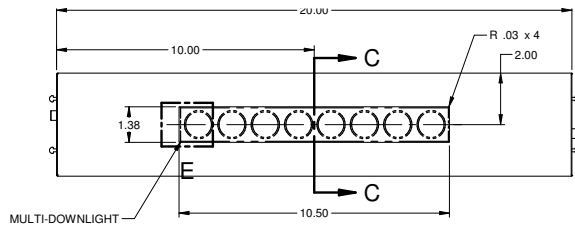
SECTION B-B
ROTATED CCW 90°



2 ft. Multi-downlight Module (Weight 5.8 lbs.)



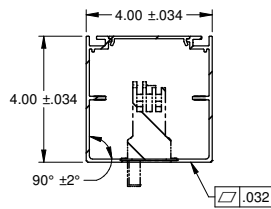
SECTION C-C
ROTATED CCW 90°



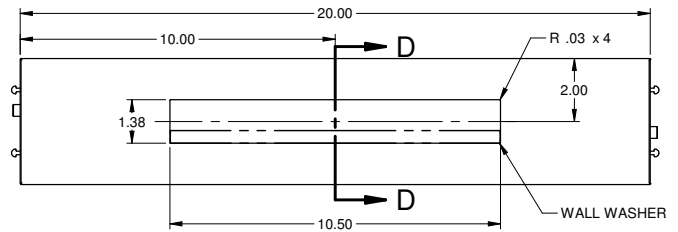
DETAIL E

DIMENSIONAL DATA

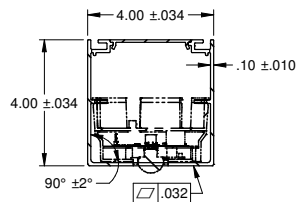
2 ft. Wall Washer Module (Weight 6.2 lbs.)



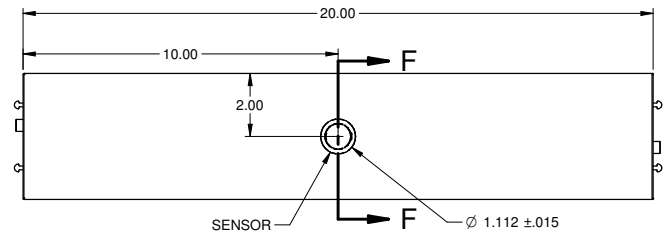
SECTION D-D
ROTATED CCW 90°



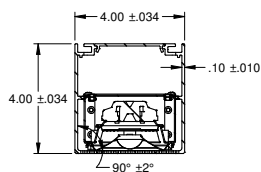
2 ft. Sensor Module (Weight 5 lbs.)



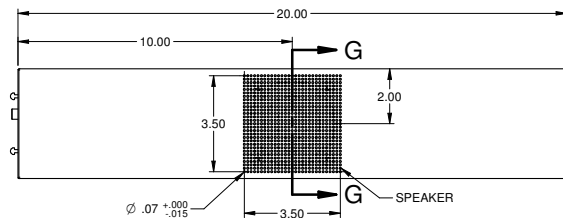
SECTION F-F
ROTATED CCW 90°



2 ft. Speaker Module (Weight 5.2 lbs.)



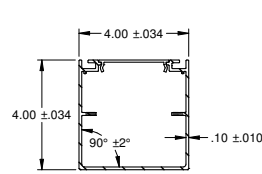
SECTION G-G
ROTATED CCW 90°



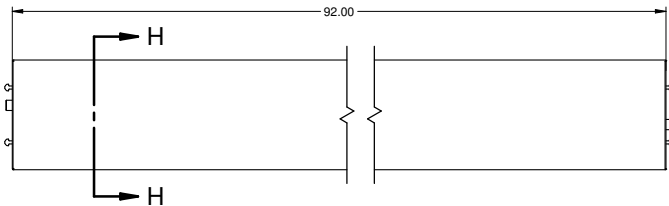


DIMENSIONAL DATA

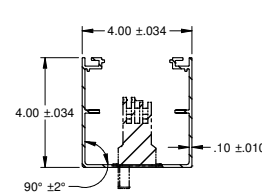
8 ft. Module (Weight 16.8 lbs.)



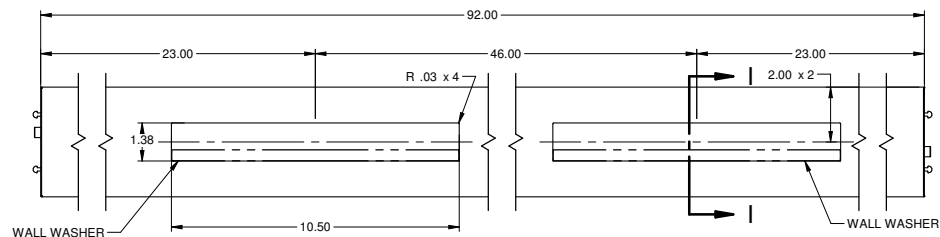
SECTION H-H
ROTATED CCW 90°



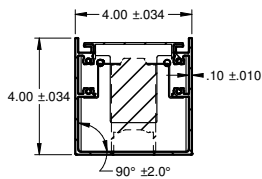
8 ft. Wall Washer Module (Weight 19.8 lbs.)



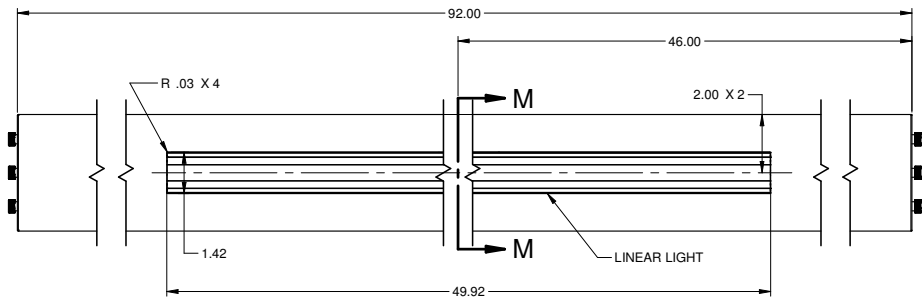
SECTION I-I
ROTATED CCW 90°



8 ft. Linear Light Module (Weight 21.2 lbs.)

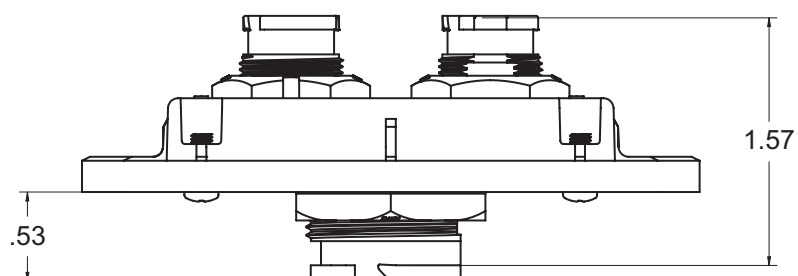
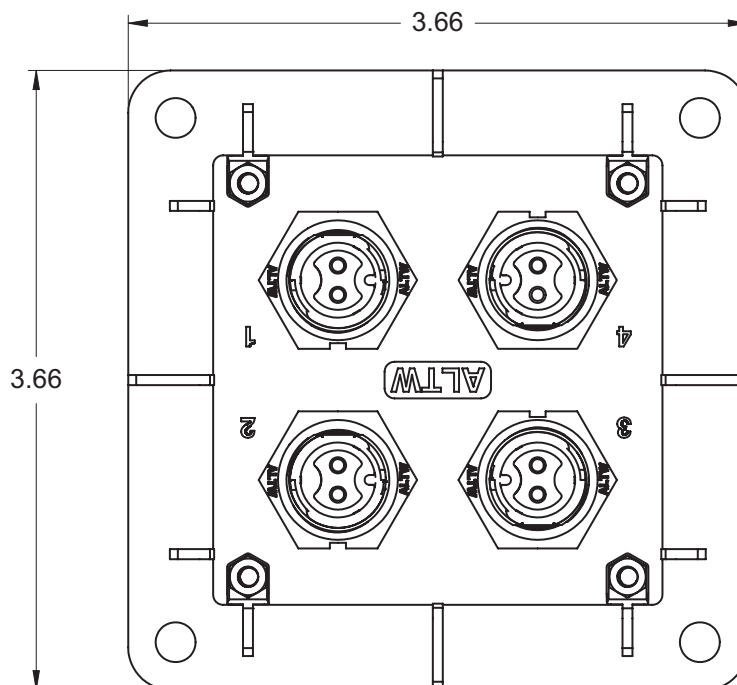
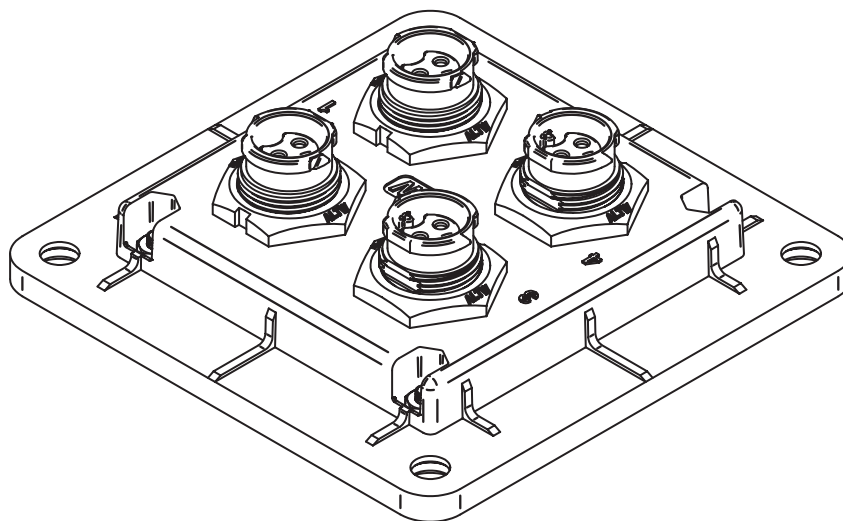


SECTION M-M
ROTATED CCW 90°



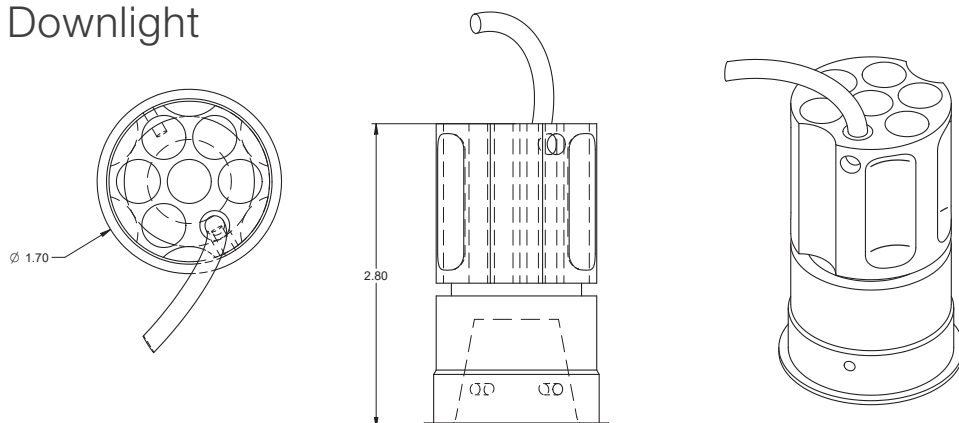
DIMENSIONAL DATA

Multiport

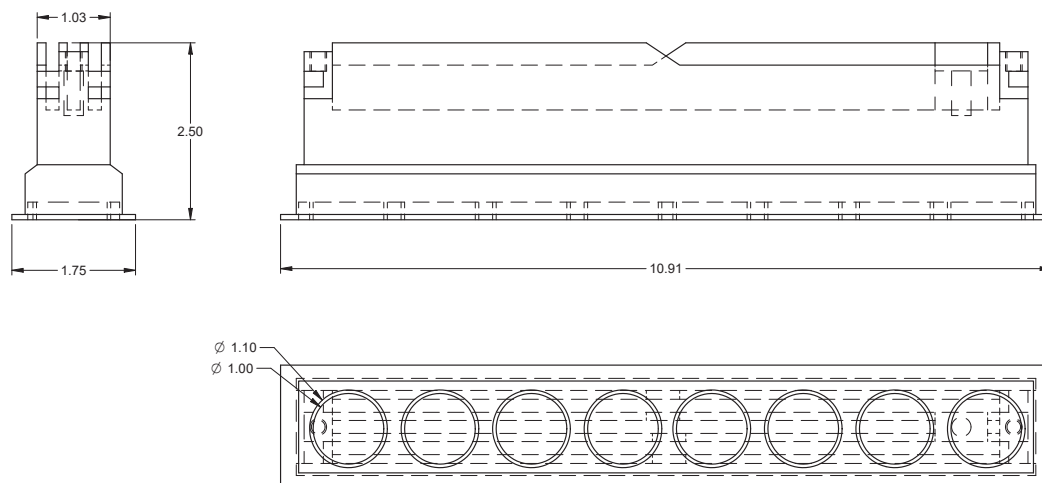


DIMENSIONAL DATA

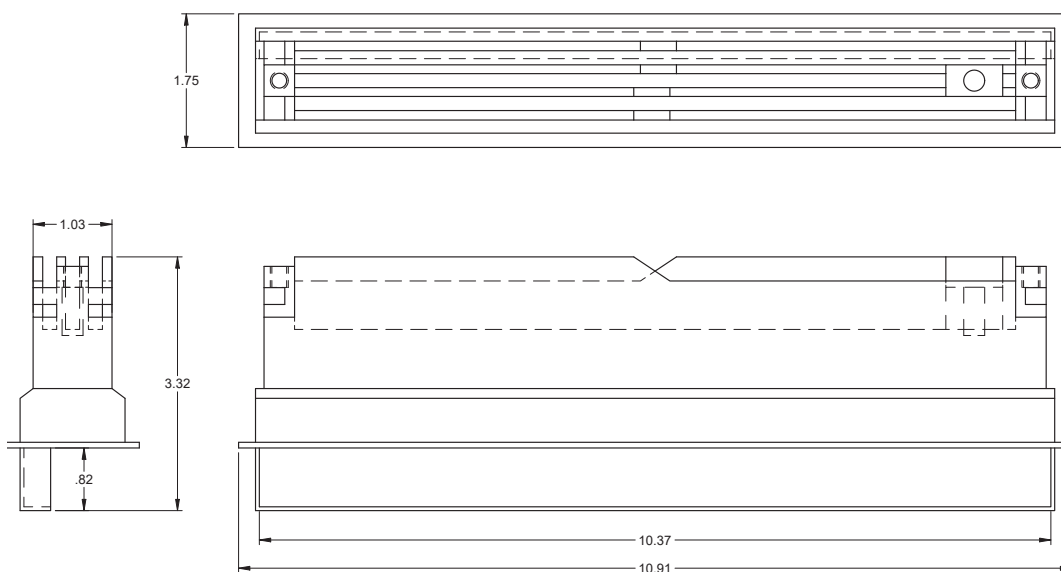
Downlight



Multi Down Light

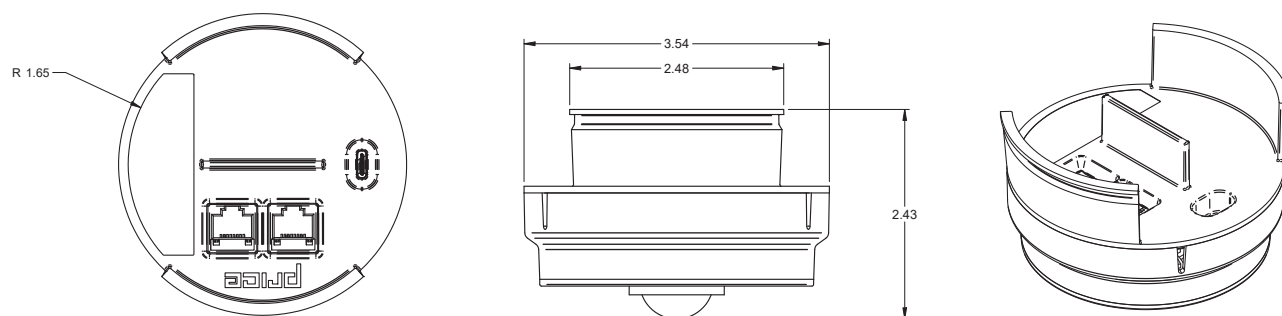


Wall Washer

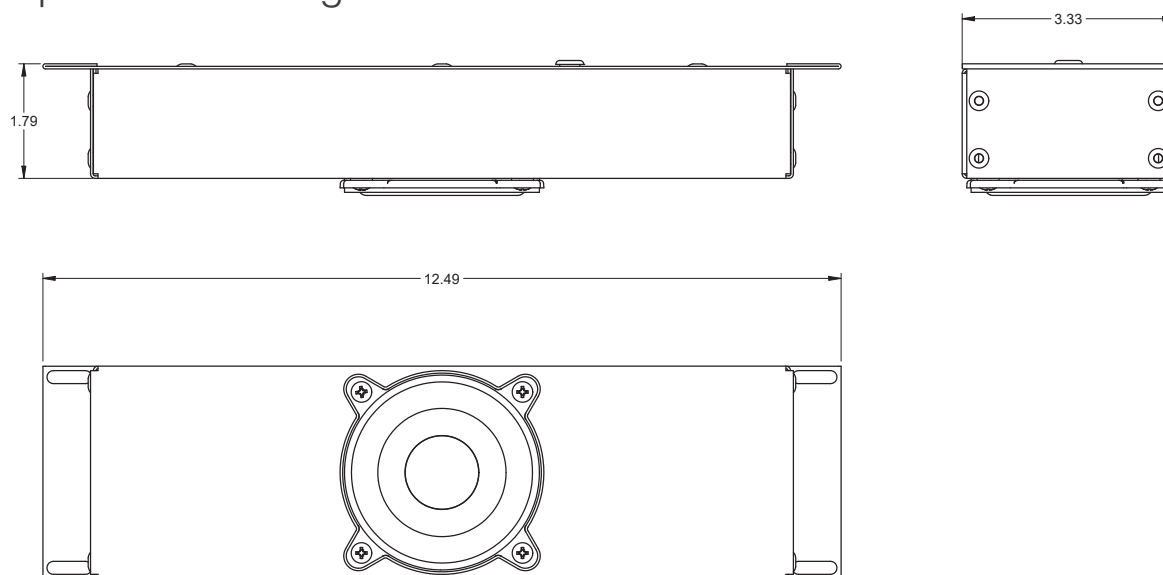


DIMENSIONAL DATA

Multisensor



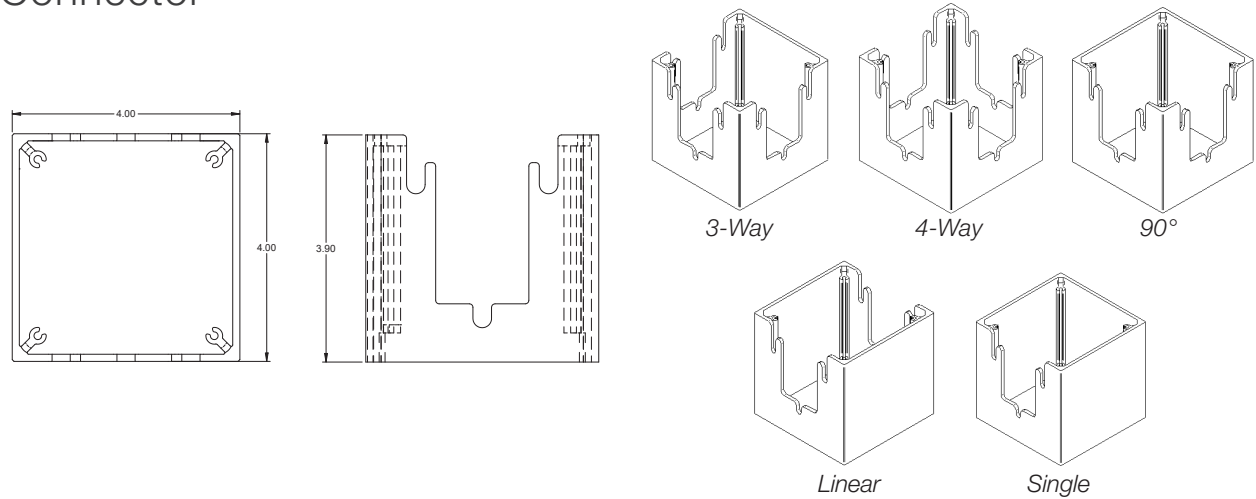
Speaker Housing



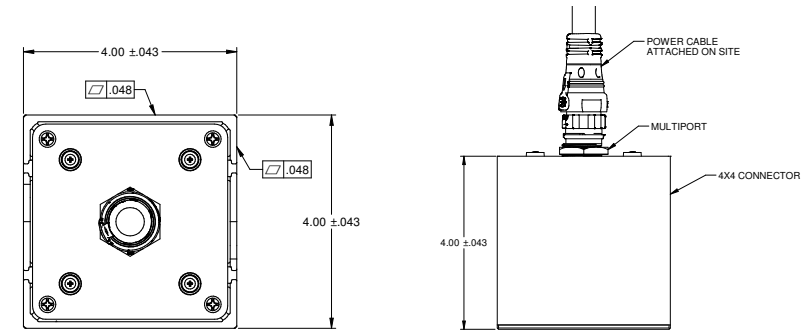


DIMENSIONAL DATA

Connector

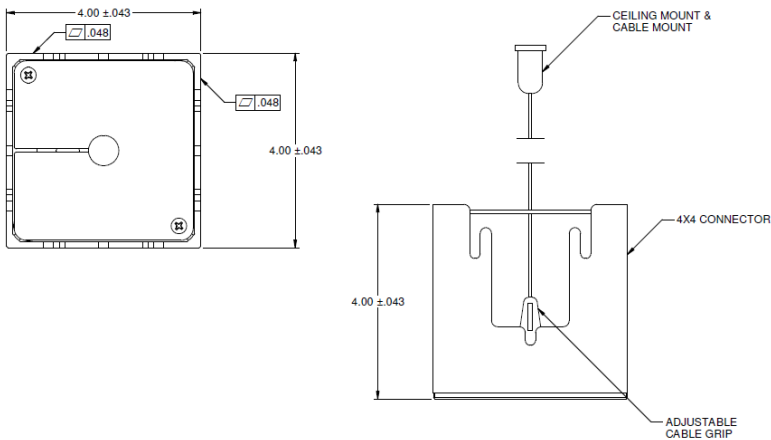


Connector w/ Multiport (Weight 2 lbs.)



8 ft. modules with integrated multiports available as specials upon request.

Connector w/ Suspension Cable (Weight 2 lbs.)



ISP DESIGN LIGHTING CONSULTANT

UNITED STATES

17225 S Dixie Hwy #201

Palmetto Bay, Florida

+1 305.278.1565



CANADA

638 Raleigh Street

Winnipeg, Manitoba

+1 204.669.4220

UNITED STATES

2975 Shawnee Ridge Court

Suwanee, Georgia

+1 770.623.8050

UNITED KINGDOM

Thames Wharf Studios, Rainville Road

London

+44 (0)203.879.9850

CONTACT US AT **INFO@PARC-CEILINGS.COM** FOR MORE INFORMATION

Product Improvement is a continuing endeavour therefore, specifications are subject to change without notice.
Consult your sales representative for current specifications or more detailed information. Not all products may be available in all geographic areas. All goods described in this document are warranted as described in Price's Terms and Conditions of Sale.