

NOTES:

- TOTAL CONNECTED LOAD NOT TO EXCEED 2 AMPS (MAXIMUM 12 LFG/RFB)
- POWER, DAMPER POSITION, AND OUTPUT STATUS LEDS
- FACTORY TOLERANCE +/- 1/32" (1)
- PLASTIC BASE (FIRE RATED)

APPLICATION:


- ☐ INPUT SIGNAL FROM DDC CONTROLLER (NO THERMOSTAT) (0-10VDC COOLING, 0-10VDC HEATING)
- ☐ PIC-TS-SENS PRICE ROOM SENSOR THERMOSTAT (SEE SUBMITTAL 250050-100)
- ☐ PIC-TS-DIAL PRICE DIAL THERMOSTAT (SEE SUBMITTAL 250051-100)
- ☐ PIC-TS-LCD PRICE LCD THERMOSTAT (CELCIUS OR FAHRENHEIT OPTION) (SEE SUBMITTAL 250052-100)
- ☐ PIC-TS-MOTION PRICE MOTION SENSOR WITH LCD THERMOSTAT (CELCIUS OR FAHRENHEIT OPTION) (SEE SUBMITTAL 250053-100)

THERMISTOR(S): ☐ THERMISTOR 1
☐ THERMISTOR 2

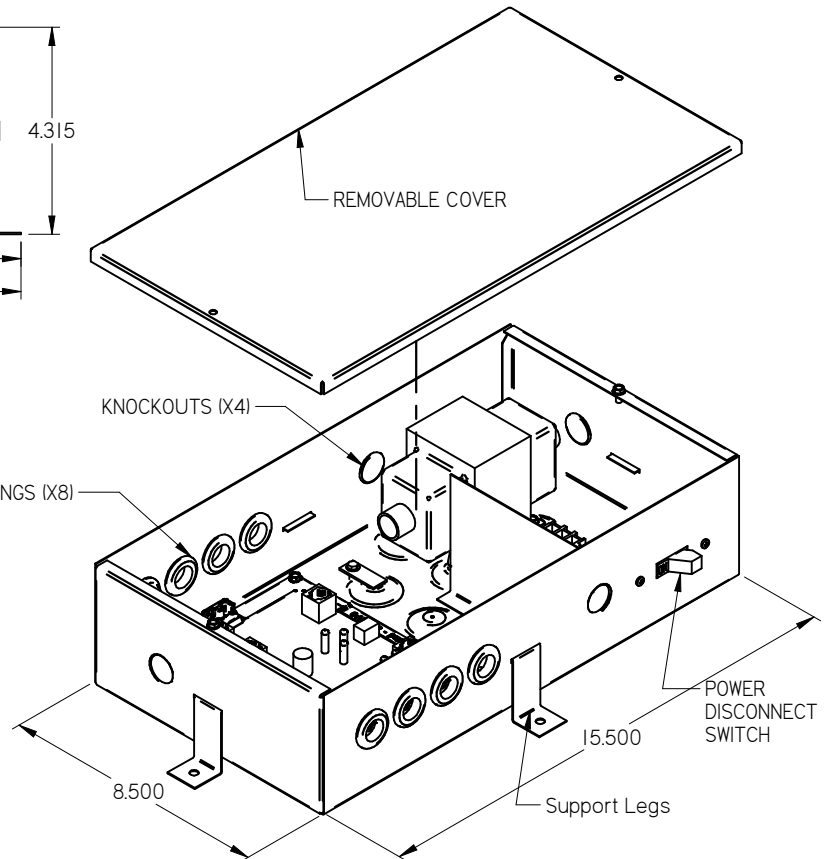
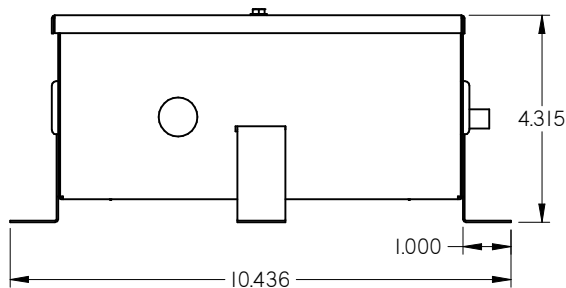
UMCB TERMINAL BOARD DESIGNATIONS

HOT - 24 VAC HOT
 COM - COMMON
 AI1 - COOLING INPUT
 AI2 - HEATING INPUT
 AI3 - ANALOG INPUT
 COM - COM
 AO1 - FAN OUTPUT (0-10VDC)
 AO2 - ANALOG HEAT OUTPUT (0-10VDC)
 AO3 - AUXILIARY ANALOG OUTPUT
 AO4 - ANALOG OUTPUT
 BO1 - REHEAT STAGE 1 OUTPUT
 BO2 - REHEAT STAGE 2 OUTPUT
 BO3 - REHEAT STAGE 3 OUTPUT
 BO4 - FAN RELAY
 BO5 - AUXILIARY DIGITAL OUTPUT
 COM - COMMON
 HOT - 24 VAC HOT

ALL METRIC DIMENSIONS () ARE SOFT CONVERTED. IMPERIAL DIMENSIONS ARE CONVERTED TO METRIC AND ROUNDED TO THE NEAREST MILLIMETER.

PROJECT:			
ENGINEER:			
CUSTOMER:		241527	UMCB UNDERFLOOR MODULATING CONTROLLER - BOX CONTROL
SUBMITTAL DATE:	SPEC. SYMBOL:	2010/03/22	

UMC3 - UNDERFLOOR MODULATION CONTROLLER 3



NOTES:

- 96 VA CLASS 2 TRANSFORMER
- ETL CERTIFIED
- TOTAL CONNECTED LOAD NOT TO EXCEED 2 AMPS
MAXIMUM 30 DAMPERS TOTAL
12 OF WHICH CAN BE LFGH
- ONE PLENUM RATED CONNECTION CABLE
- PROVIDED WITH EACH RFB/LFGH/DBV
- POWER DISCONNECT SWITCH
- POWER AND SIGNAL STATUS LED'S
- 22 GAUGE GALV. STEEL ENCLOSURE

APPLICATION:

- ☐ INPUT SIGNAL FROM DDC CONTROLLER (NO THERMOSTAT) (0 -10V DC COOLING)
- ☐ PIC-TS-SENS PRICE ROOM SENSOR THERMOSTAT (SEE SUBMITTAL 250050-100)
- ☐ PIC-TS-PRICE DIAL THERMOSTAT (SEE SUBMITTAL 250051-100)
- ☐ PIC-TS-LCD PRICE LCD THERMOSTAT (CELCIUS OR FAHRENHEIT OPTION)
(SEE SUBMITTAL 250052-100)
- ☐ PIC-TS-MOTION PRICE MOTION SENSOR WITH LCD THERMOSTAT (CELCIUS OR FAHRENHEIT OPTION)
(SEE SUBMITTAL 250053-100)
- ☐ WIRELESS D OPTION - WIRELESS THERMOSTAT (DIAL)
AND BASE, INCLUDES ROUND FLOOR DIFFUSER, RING
OR ACCESSORY BASKET (SEE NEXT PAGE)

TRANSFORMER OPTIONS:

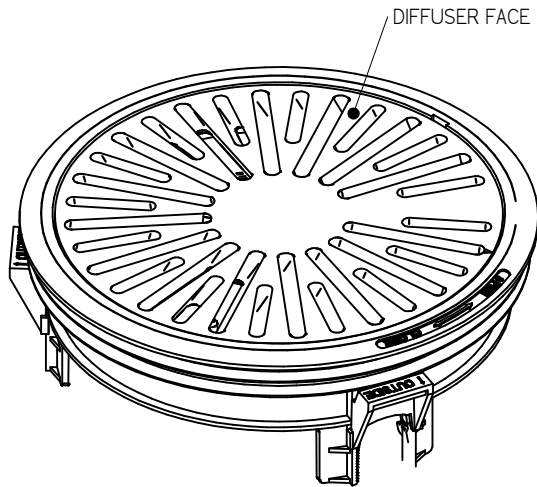
- ☐ 115/24 VAC 96 VA TRANSFORMER
- ☐ 277/24 VAC 96 VA TRANSFORMER



ALL METRIC DIMENSIONS () ARE SOFT CONVERTED. IMPERIAL DIMENSIONS ARE CONVERTED TO METRIC AND ROUNDED TO THE NEAREST MILLIMETER.

PROJECT:		PRICE	
			UMC3
ENGINEER:		250492	UNDERFLOOR MODULATING CONTROLLER 3 FOR RFB, LFGH OR DBV
CUSTOMER:			
SUBMITTAL DATE:	SPEC. SYMBOL:		

☐ **WIRELESS D OPTION**



FASTENING OPTIONS:

- ☐ RPF - RING PRESS FIT
- ☐ ZC - ZIP CLIP

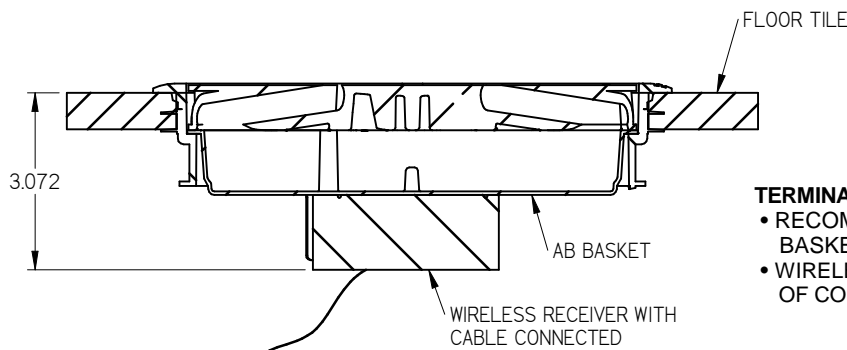
DIFFUSER

FACE OPTIONS:

- ☐ RFTD (SHOWN) (SEE SUBMITTAL: 236883)
- ☐ RFDD (SEE SUBMITTAL: 247512)

WIRELESS AB BASKET:

- DOES NOT SUPPLY AIR
- ONLY FOR HOLDING/MOUNTING WIRELESS RECIEVER
- ALLOWS FOR RADIO TRANSMISSION
- MOUNT WIRELESS STAT WITHIN 50 FEET OF RECEIVER
- SEE ABOVE SUBMITTALS FOR FLOOR TILE PRECISION OPENING





TERMINAL/CONTROLLER:

- RECOMMEND DIFFUSER AND WIRELESS ACCESSORY BASKET INSTALLED ON TILE ABOVE CONTROLLER
- WIRELESS ACCOSSORY BASKET MUST BE WITHIN 6 FEET OF CONTROLLER

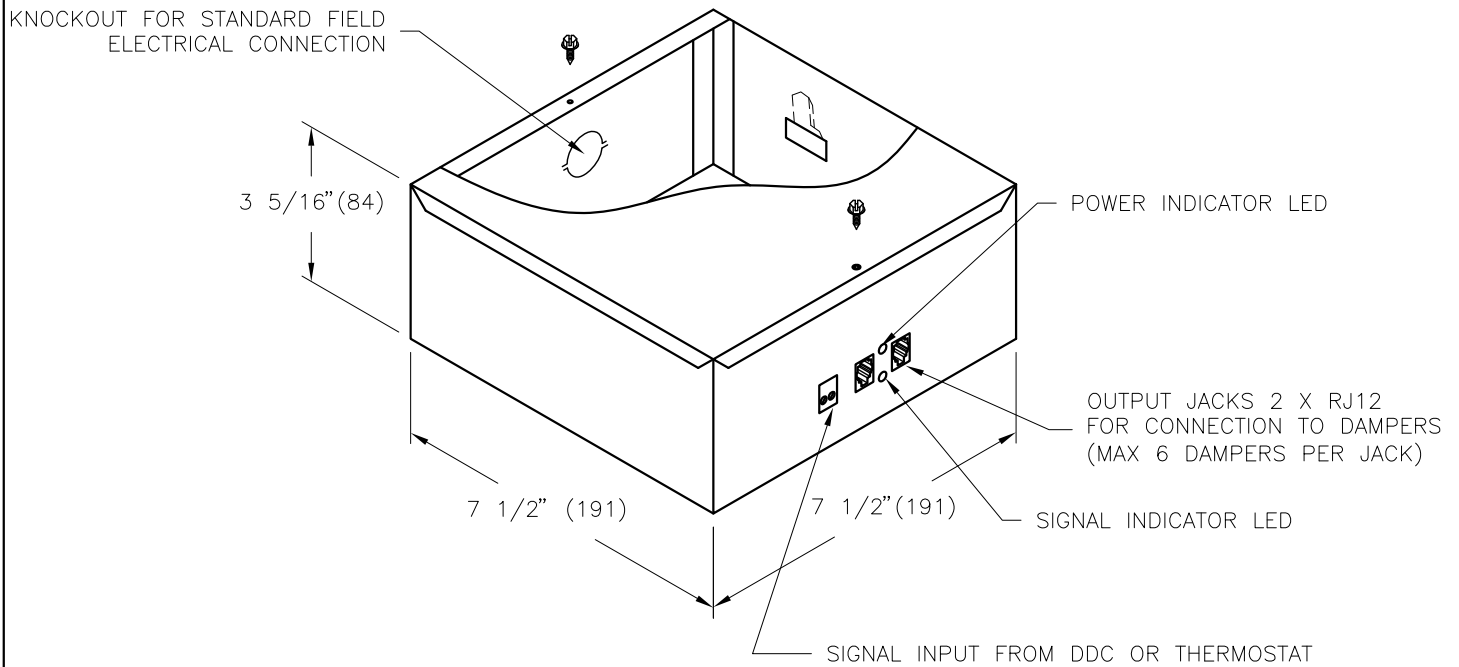
TERMINAL UNIT/CONTROLLER



ALL METRIC DIMENSIONS () ARE SOFT CONVERTED. IMPERIAL DIMENSIONS ARE CONVERTED TO METRIC AND ROUNDED TO THE NEAREST MILLIMETER.

PROJECT:			
ENGINEER:			UMC3 UNDERFLOOR MODULATING CONTROLLER 3 FOR RFB, LFGH OR DBV
CUSTOMER:		250492	
SUBMITTAL DATE:	SPEC. SYMBOL:	02/01/2011	

UMC1 - Underfloor Modulating Controller, Version 1



NOTES:

- 50 VA CLASS 2 TRANSFORMER
- ETL CERTIFIED
- TOTAL CONNECTED LOAD NOT TO EXCEED 2 AMPS (MAXIMUM 12 DAMPERS)
- ONE PLENUM RATED CONNECTION CABLE PROVIDED WITH EACH DAMPER
- POWER DISCONNECT SWITCH
- POWER AND SIGNAL STATUS LED'S
- 3 x 1/4\" (6) MOUNTING HOLES ON BOTTOM

TRANSFORMER OPTIONS:

- ☐ 115/24 VAC 50 VA TRANSFORMER
- ☐ 277/24 VAC 50 VA TRANSFORMER

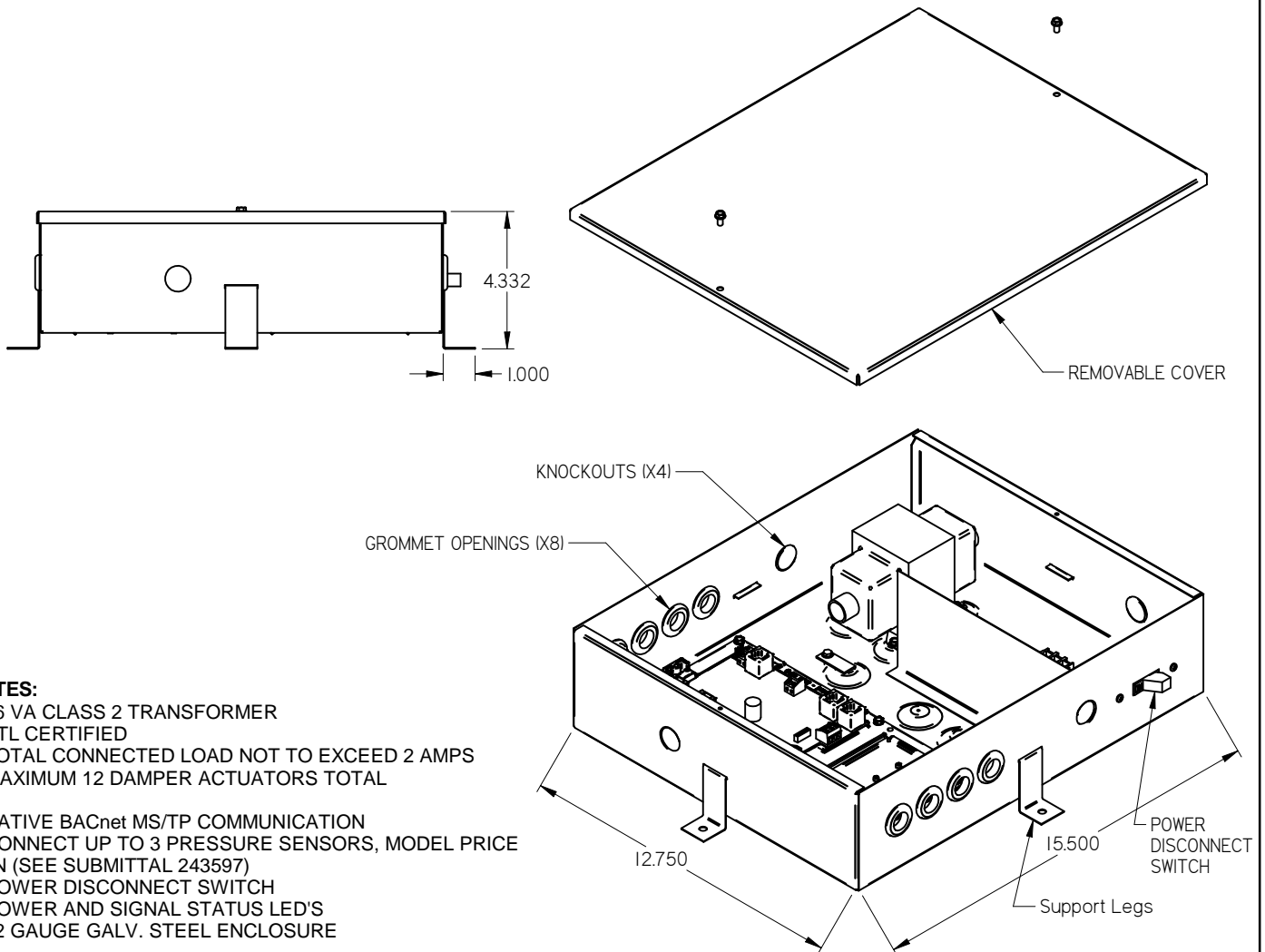
APPLICATION:

- ☐ INPUT SIGNAL FROM DDC CONTROLLER (NO THERMOSTAT) (0-10V DC COOLING)
- ☐ DIAL ADJUSTABLE T-STAT

ALL METRIC DIMENSIONS () ARE SOFT CONVERTED. IMPERIAL DIMENSIONS ARE CONVERTED TO METRIC AND ROUNDED TO THE NEAREST MILLIMETER.

PROJECT:		PRICE®	
		<i>DS</i>	UMC1
ENGINEER:		236920	UMC1 UNDERFLOOR MODULATING CONTROLLER
CUSTOMER:			
SUBMITTAL DATE:	SPEC. SYMBOL:	2010/09/28	

PCU - PRESSURE CONTROLLER FOR UNDERFLOOR AIR DISTRIBUTION



NOTES:

- 96 VA CLASS 2 TRANSFORMER
- ETL CERTIFIED
- TOTAL CONNECTED LOAD NOT TO EXCEED 2 AMPS
- MAXIMUM 12 DAMPER ACTUATORS TOTAL
- NATIVE BACnet MS/TP COMMUNICATION
- CONNECT UP TO 3 PRESSURE SENSORS, MODEL PRICE RPN (SEE SUBMITTAL 243597)
- POWER DISCONNECT SWITCH
- POWER AND SIGNAL STATUS LED'S
- 22 GAUGE GALV. STEEL ENCLOSURE

APPLICATION:

☐ **CONSTANT VOLUME**

VARIABLE VOLUME WITH :

- ☐ PRICE ROOM SENSOR THERMOSTAT (SEE SUBMITTAL 250050-100)
- ☐ DIAL THERMOSTAT (SEE SUBMITTAL 250051-100)
- ☐ PRICE LCD THERMOSTAT (CELCIUS OR FAHRENHEIT OPTION) (SEE SUBMITTAL 250052-100)
- ☐ PRICE MOTION SENSOR WITH LCD THERMOSTAT (CELCIUS OR FAHRENHEIT OPTION) (SEE SUBMITTAL 250053-100)

TRANSFORMER OPTIONS:

- ☐ 120/24 VAC 96 VA TRANSFORMER
- ☐ 277/24 VAC 96 VA TRANSFORMER
- ☐ 240/24 VAC 96 VA TRANSFORMER

ALL METRIC DIMENSIONS () ARE SOFT CONVERTED. IMPERIAL DIMENSIONS ARE CONVERTED TO METRIC AND ROUNDED TO THE NEAREST MILLIMETER.

PROJECT:		price	
ENGINEER:		<i>CR</i>	PCU PRESSURE CONTROLLER FOR UNDERFLOOR PLENUM
CUSTOMER:			
SUBMITTAL DATE:		259514	
SPEC. SYMBOL:		2015/03/20	