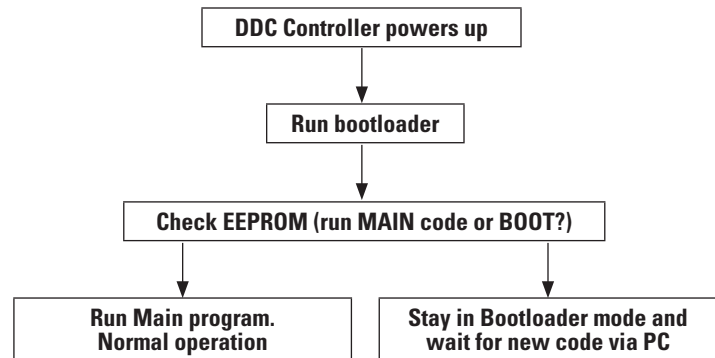


Price Controls Bootloader

Bootloading allows a user to re-program a controller "remotely" through a thermostat using a Laptop and interface cable. This is a convenient way to update controls without climbing ladders or moving furniture. Bootloading a controller is sometimes necessary to add a new feature or change operations in the field. Price offers bootloading on most of its latest generation controls. Bootloading can be done by trained Price representatives or Price factory personnel.

The length of time to load the new program depends on the size of the code and the baud rate (speed) used. Typically most Price Controls can be bootloaded in approximately 1-2 minutes.



Technician with laptop bootloading through the thermostat's service port.

